

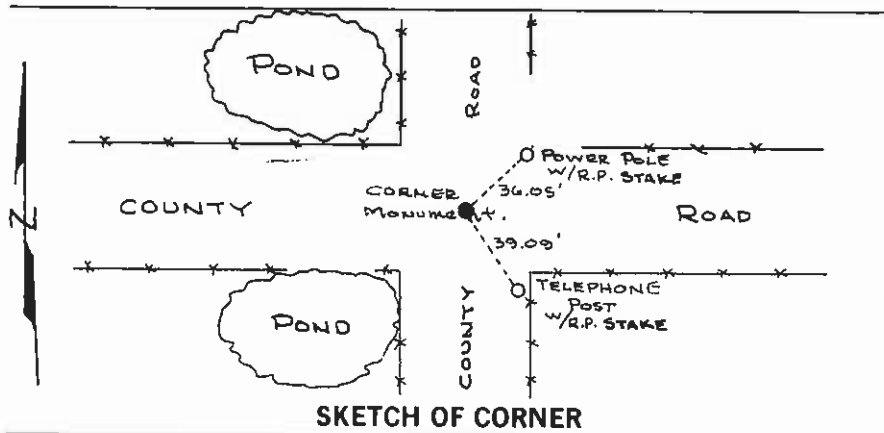
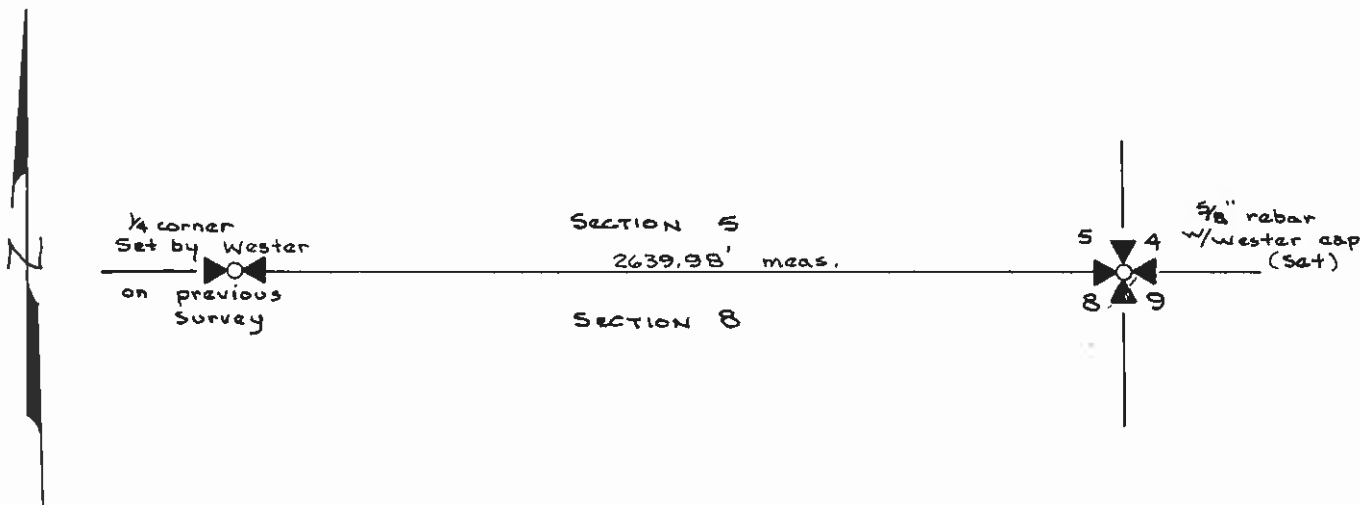
INSTRUCTIONS

1. Original and/or copy of record used to evaluate the corner position.
2. Description of evidence found, note discrepancies in the record, state method of establishing lost or obliterated corners.
3. Description of monument and accessories set to perpetuate the corner position.
4. Sketch or corner, show all pertinent data which can best be shown in a sketch example, corner marking, topography ties, position of accessories, etc.
5. Certification must be signed and sealed by Registered Land Surveyor in State of Montana.
6. Fill in Cross Index & Section Diagram at bottom of sheet.

CERTIFIED CORNER RECORDATION

Corner SECTION CORNER 4, 5, 8, & 9 T. 19 N R. 20 W P.M.M. LAKE County

The position of this corner falls in the construction limits of the existing county road. No monument was found as it would have been destroyed by road construction. Corner position was determined by road intersection, and distances to monuments of record as shown below.



CERTIFICATION

I, STEPHEN H. DAY
 certify the information shown herein is true and correct.
 Signature of Field Party Chief

I, DONALD H. WESTER
 certify that this Corner Record correctly represents work performed by me or under my direction in compliance with the "Corner Recordation Act" (70-22-101, et seq., M.D.A.)
 Signature of Surveyor & Seal

Date: 8-83 Reg. No. 41305

Employer: _____

Office of Clerk and Recorder, County of Lake, State of Montana. This "corner record" was filed for record on the August 30, 1983, at 12:12 P.M.

was noted on the cross-index plat and is assigned Micro. No. 277097 in book No. C-1267 by Ethel M. Harding, Lake County Clerk & Recorder, Deputy County Official

