

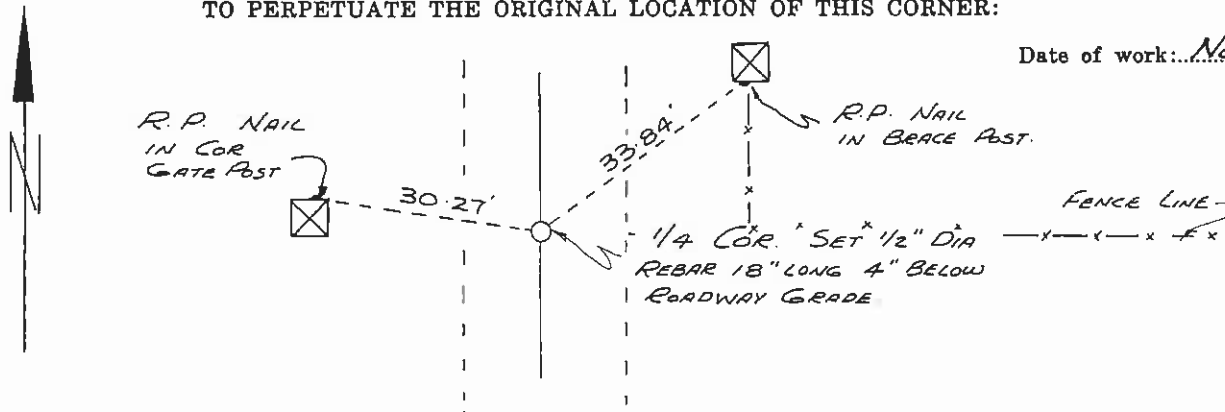
CERTIFIED LAND CORNER RECORDATION

DESCRIPTION OF CORNER EVIDENCE FOUND, AND ORIGINAL RECORD (IF KNOWN)

No EVIDENCE OF ORIGINAL - CORNER DESTROYED BY CONSTRUCTION OF COUNTY ROAD.

DESCRIPTION OF MONUMENT AND ACCESSORIES ESTABLISHED TO PERPETUATE THE ORIGINAL LOCATION OF THIS CORNER:

Date of work: Nov. 12, 1974.



SKETCH, WITH COURSE AND DISTANCE TO ADJACENT CORNERS IF DETERMINED IN THIS SURVEY. (MAY SKETCH OR PASTE REPRODUCTION ON REVERSE SIDE.)

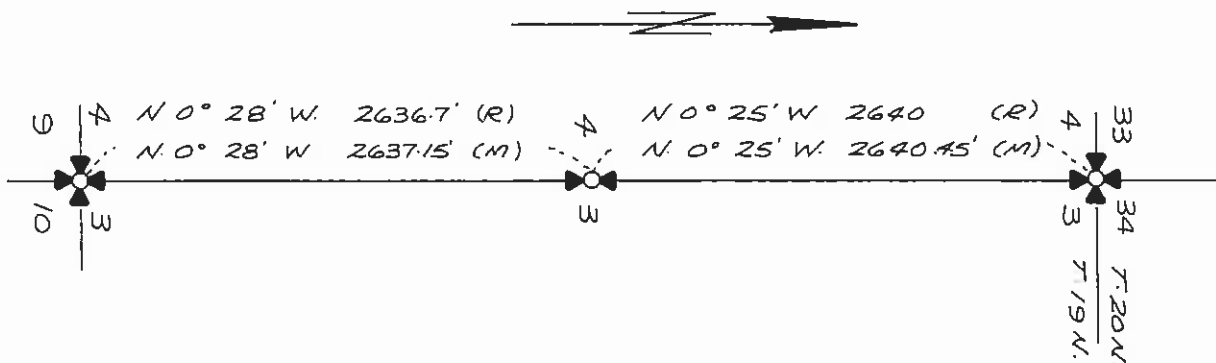
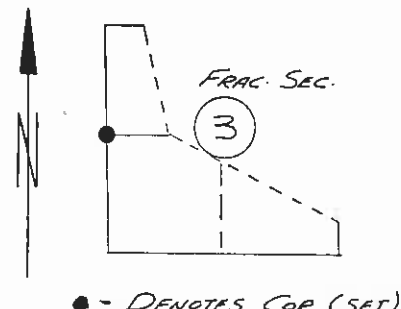


DIAGRAM OF CORNER:

T. 19 N. R. 20 W.



Surveyor's Seal

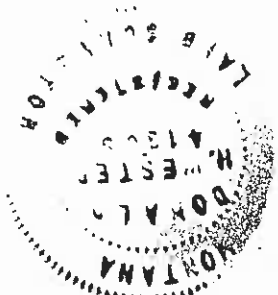
I, _____ certify that the information shown herein is true and correct.

Signature of Ground Party Chief

I, DONALD H. WESTER certify that I have carefully performed or reviewed the work done on the diagrammed corner as reported on this recordation form and approve the same.

Donald H. Westee
Signature of Surveyor

4130 S.
Registration Number



Office of Clerk and Recorder; County of Lake, State of Montana
This "corner record" was filed for record on the 9th day of Dec. 1974 at 3:45 o'clock P.M.
assigned page No. 219835, in book No. C-529
CLERK & RECORDER
ETHEL M. HARDING
County Official By: Ethel M. Harding
Cross Index No. C-13 T. 19 R. 20 Mer. Rep.