

INSTRUCTIONS

1. Original and/or subsequent record used to evaluate the corner position.
2. Description of evidence found, note discrepancies in the record, state method of establishing lost or obliterated corners.
3. Description of monument and accessories set to perpetuate the corner position.
4. Sketch of corner, show all pertinent data which can best be shown in a sketch example, corner marking, topography ties, position of accessories, etc.
5. Certification must be signed and sealed by Land Surveyor registered in the State of Montana.
6. Fill in Cross Index & Section Diagram at bottom of sheet.

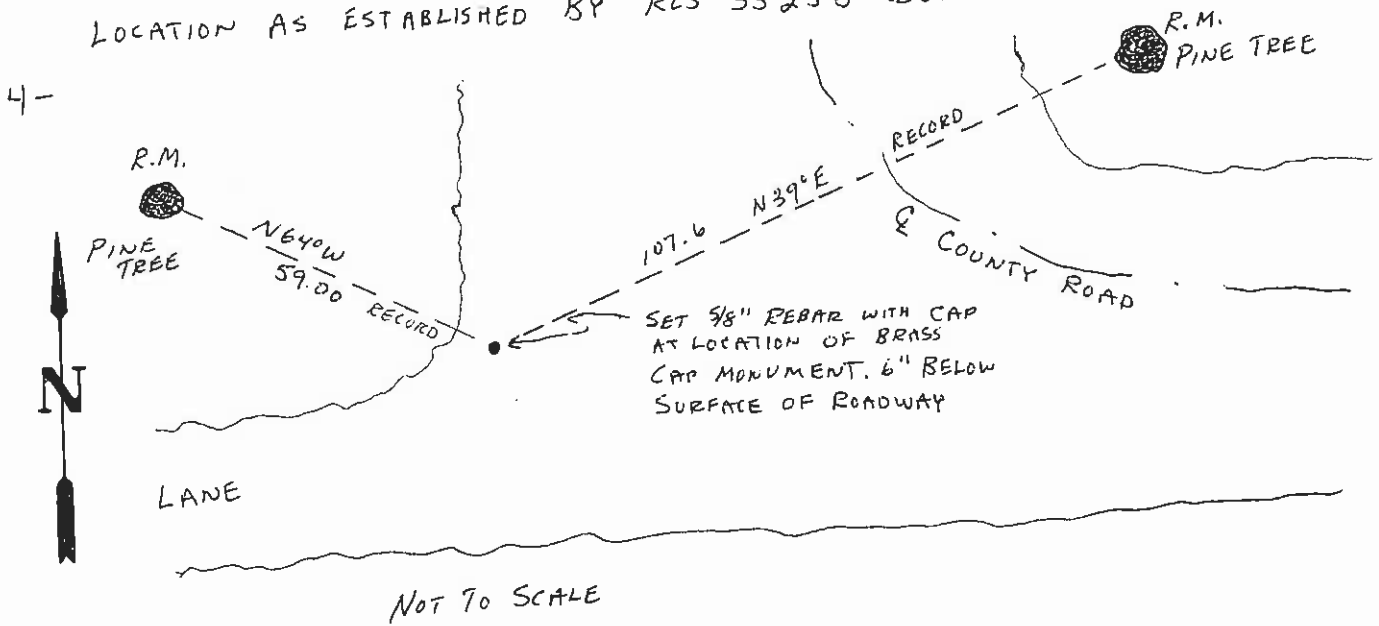
CERTIFIED CORNER RECORDATION

Corner WEST 1/4 COR SECTION 7 T. 20N. R. 19W. P.M.M. LAKE County

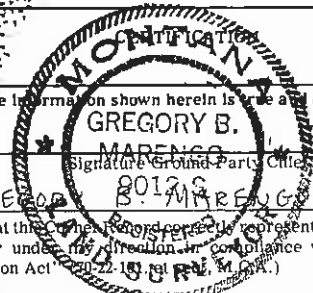
1- SEE CERTIFIED LAND CORNER RECORDATION FORM FILED ON WORK DONE IN MAY OF 1971 BY RLS 3325 S.

2- FOUND A 30" GALVANIZED PIPE WITH ITS BRASS CAP TORE OFF BY HEAVY ROAD EQUIPMENT. THE TOP 10 INCHES HAVE BEEN BENT OVER AND IS ON SURFACE OF ROADWAY. BOTH RM'S ARE ALIVE AND IN GOOD CONDITION.

3- I REMOVED THE BENT OVER MONUMENT OF RECORD AND IN ITS PLACE I SET A 5/8" REBAR, 24" LONG, WITH A PLASTIC CAP MARKED "RLS 9012 S". THIS MONUMENT IS 6 INCHES BELOW ROAD SURFACE TO PRESERVE ITS POSITION. BEARINGS AND DISTANCES TO R.M.'S OF RECORD CONFIRM THE LOCATION AS ESTABLISHED BY RLS 3325 S DURING 1971.



I, _____ certify the information shown herein is true and correct.



GREGORY B. MARENCO
Signature of Ground Party Chief

I, GREGORY B. MARENCO certify that this corner record correctly represents work performed by me or under my direction in compliance with the "Corner Recordation Act" (20-22-101 et seq., M.C.A.)

Gregory B. Marenco
Signature of Surveyor & Seal

Date: 9-10-87 Reg. No. 90125

Employer: _____

SKETCH OF CORNER

Office of Clerk and Recorder, County of Lake. This "corner

record" was filed for record on October 26, 1987 at 1:19 p.m. and

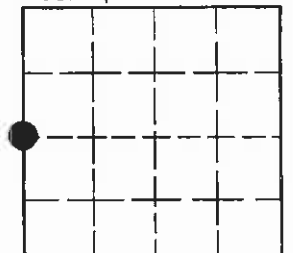
was noted on the cross-index plat and is assigned microfilm No. 308702 in

file No. C-1544

LORIN JACOBSON CLERK & RECORDER
Jay Cardace Deputy
County Official

n/c
Cross Index No. G-1 T. 20N R. 19W P.M.M.

Sec. 7



• - corner this sheet