

CERTIFIED LAND CORNER RECORDATION
(REFERENCE FSH 5681.65)

208941

DESCRIPTION OF CORNER EVIDENCE FOUND, AND ORIGINAL RECORD (IF KNOWN)
AT THE 1/4 CORNER FOR SEC 20 & 21, T20N R19W P.M., MONT.
RECORD: SET WASHED BOULDER 16"X10"X8" (NOT FOUND)

RECORD BT'S

- A PINE 36" DIA BEARS S35°E 27LKS (FOUND & HOLE & STUMP REMAINS @ REC.)
- A " 14 " " N180°W 19.5LKS (FALLS IN COUNTY ROAD - NOT FOUND)

DESCRIPTION OF MONUMENT AND ACCESSORIES ESTABLISHED
TO PERPETUATE THE ORIGINAL LOCATION OF THIS CORNER:

SET 2" X 2" IRON PIPE WITH A DRILL BIT WELDED TO TOP 6" BELOW SURFACE OF COUNTY ROAD REFERENCED AS SHOWN BELOW. Date of work: 3-17-73

SKETCH, WITH COURSE AND DISTANCE TO ADJACENT CORNERS IF DETERMINED IN THIS SURVEY.
(MAY SKETCH OR PASTE REPRODUCTION ON REVERSE SIDE.)

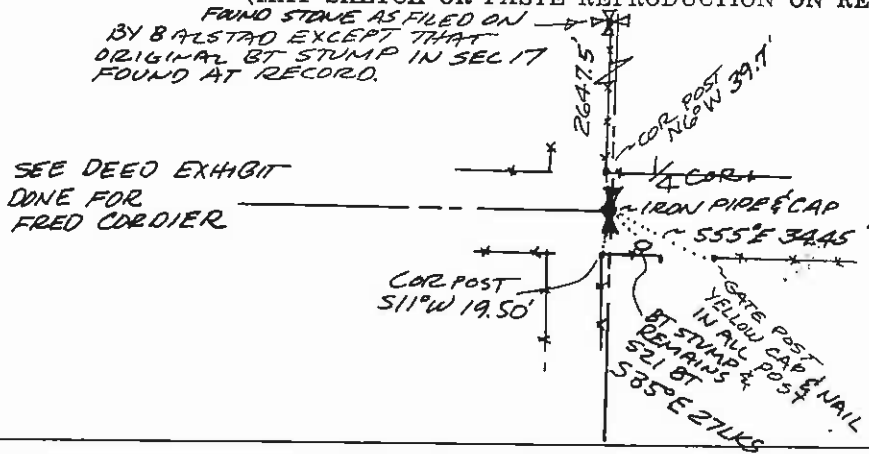
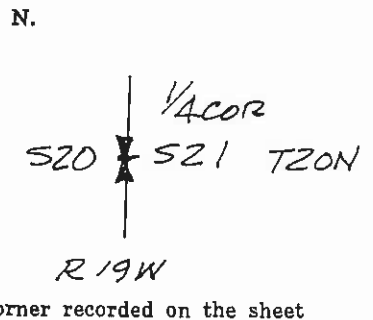


DIAGRAM OF CORNER:



Surveyor's Seal

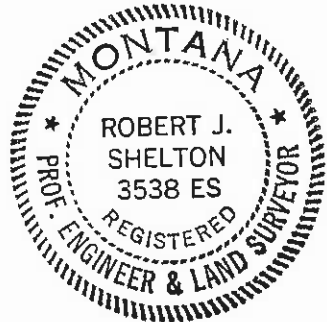
I, _____
certify that the information shown herein is true and correct.

Signature of Ground Party Chief

I, ROBERT J. SHELTON
certify that I have carefully performed or reviewed the work done on the diagrammed corner as reported on this recordation form and approve the same.

Robert J. Shelton
Signature of Surveyor

3538 ES
Registration Number



Office of Clerk and Recorder, County of Lake

This "corner record" was filed for record on the 11 day of April, 1973, at 1:55 PM, was noted on the cross-index plat and is assigned page No. _____, in book No. C-356

County Official
Wilhelmina Laughlin
Deputy

Cross Index No. P-9 T. 20N R. 19W Mer.