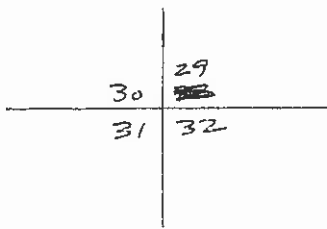


INSTRUCTIONS

1. Original and/or subsequent record used to evaluate the corner position.
2. Description of evidence found, note discrepancies in the record, state method of establishing lost or obliterated corners.
3. Description of monument and accessories set to perpetuate the corner position.
4. Sketch of corner, show all pertinent data which can best be shown in a sketch example, corner marking, topography ties, position of accessories, etc.
5. Certification must be signed and sealed by Land Surveyor registered in the State of Montana.
6. Fill in Cross Index & Section Diagram at bottom of sheet.

CERTIFIED CORNER RECORDATION

Corner SECTION CORNER T. 20N. R. 20W. P.M.M. LAKE County



RECORD: NO ORIGINAL EVIDENCE FOUND. CORNER POSITION FALLS WITHIN CONSTRUCTION LIMITS OF A COUNTY ROAD. NO SUBSEQUENT EVIDENCE FOUND.

SET: A 5/8" DIA. REBAR WITH CAP STAMPED "MARENGO LS 9012" CORNER POSITION ESTABLISHED BY SPLITTING THE DISTANCE BETWEEN FENCES ALONG THE COUNTY ROAD.

(SEE REVERSE SIDE)



CERTIFICATION

I, GREGORY B. MARENGO certify the information shown herein is true and correct.

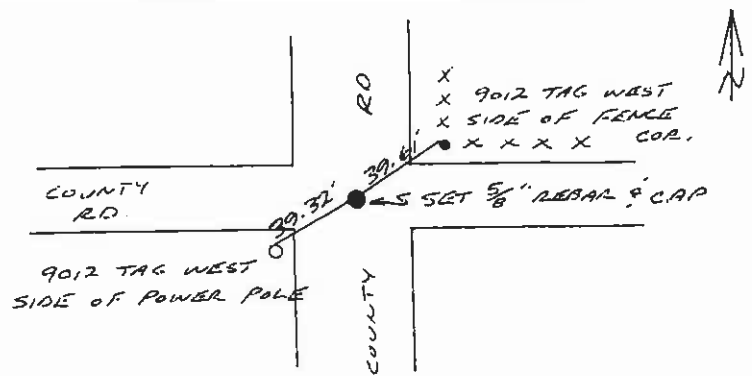
Signature Ground Party Chief

I, GREGORY B. MARENGO certify that this Corner Record correctly represents work performed by me or under my direction in compliance with the "Corner Recordation Act" (70-22-101, et seq., M.C.A.)

Signature of Surveyor & Seal: Gregory B. Marengo

Date: 5/11/89 Reg. No. 9012 S

Employer: MARENGO SURVEYING



SKETCH OF CORNER

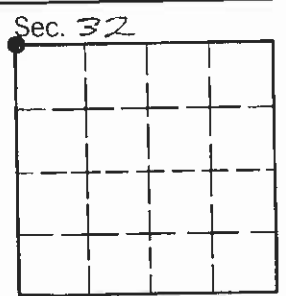
Office of Clerk and Recorder, County of Lake Polson, MT. This "corner record" was filed for record on May 15, 1989 at 9:51 A.M. was noted on the cross-index plat and is assigned microfile #

Q-1656 317952

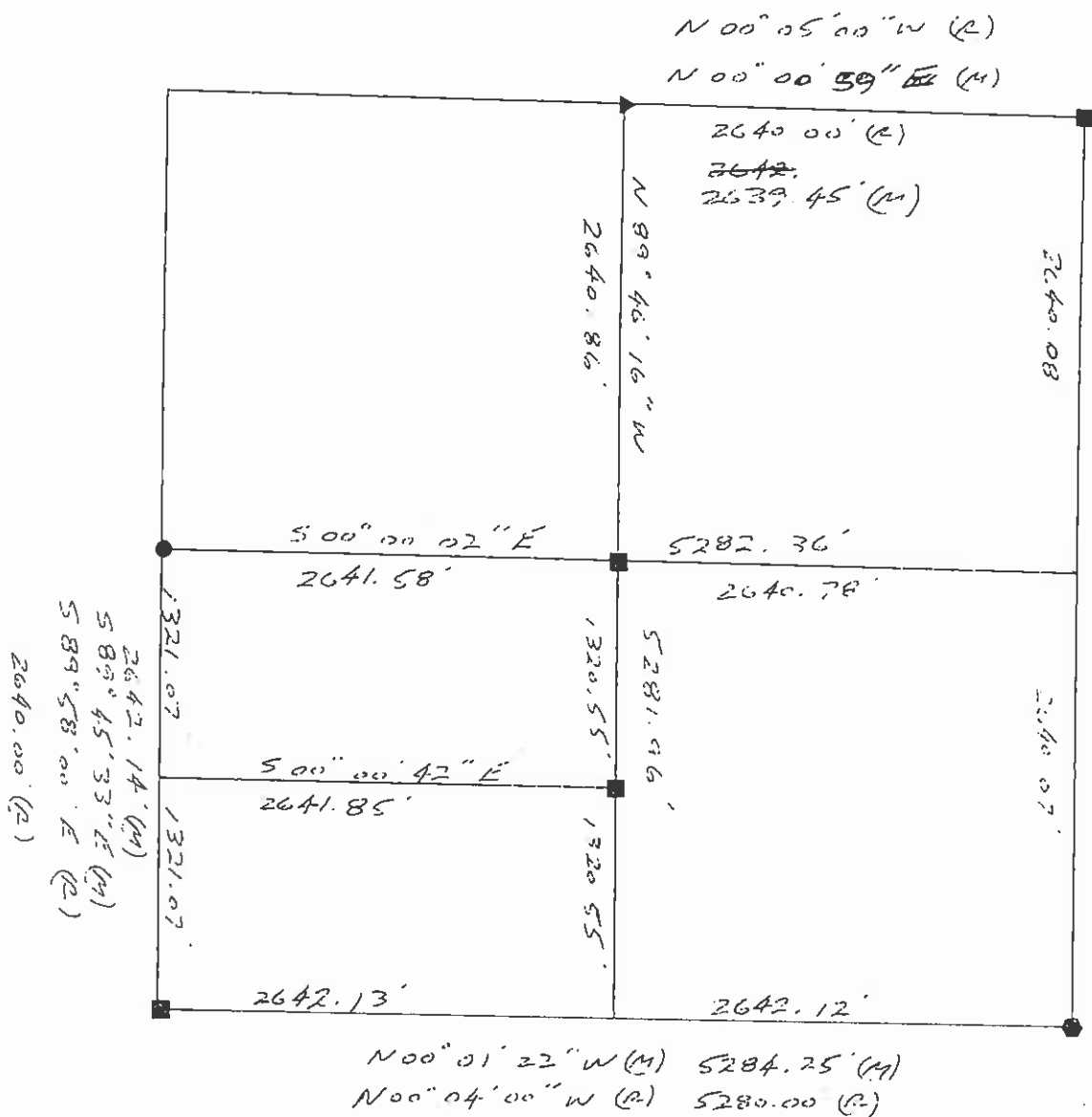
Judith Ann Oleson, deputy County Official

N/c

Cross Index No. V-5 T. 20N. R. 20W. PMM



• - corner this sheet



SECTION 32, T 20N, R 20W, 7th PM
 N 89° 48' 00" W (M) BASIS OF BEARINGS
 5281.32 (R) 5280.15 (M) ALSO RECORD

N 00° 01' 22" W (M) 5284.25' (M)
 N 00° 04' 00" W (R) 5280.00 (R)

LEGEND

- FOUND 3/10 BRASS CAP
- FOUND 1/2" REBAR (SEE CORNER RECORDATION)
- ▲ FOUND 3/8" STEEL PIN (SET BY 42229 S PER COS & 3349)
- SET 5/8" REBAR WITH CAP STAMPED "MARLENGO LS 9012"
- (R) DENOTES RECORD BEARING/DISTANCE
- (M) DENOTES MEASURED BEARING/DISTANCE