

**INSTRUCTIONS**

1. Original and/or subsequent record used to evaluate the corner position.
2. Description of evidence found, note discrepancies in the record, state method of establishing lost or obliterated corners.
3. Description of monument and accessories set to perpetuate the corner position.
4. Sketch of corner, show all pertinent data which can best be shown in a sketch example, corner marking, topography ties, position of accessories, etc.
5. Certification must be signed and sealed by Land Surveyor registered in the State of Montana.
6. Fill in Cross Index & Section Diagram at bottom of sheet.

**CERTIFIED CORNER RECORDATION**

Corner SECTION CORNER T. 20N. R. 20W. P.M.M. LAKE County

T. 20 N.	32	33
T. 19 N.	5	4

RECORD: NO ORIGINAL EVIDENCE FOUND. CORNER POSITION FALLS WITHIN CONSTRUCTION LIMITS OF A COUNTY ROAD. NO SUBSEQUENT EVIDENCE FOUND.

SET: A  $\frac{5}{8}$ " DIA. REBAR WITH CAP STAMPED "MARENGO LS 9012." CORNER POSITION ESTABLISHED BY SPLITTING THE DISTANCE BETWEEN FENCES ALONG THE COUNTY ROAD.

(SEE REVERSE SIDE)



**CERTIFICATION**

I, GREGORY B. MARENGO  
certify the information shown herein is true and correct.

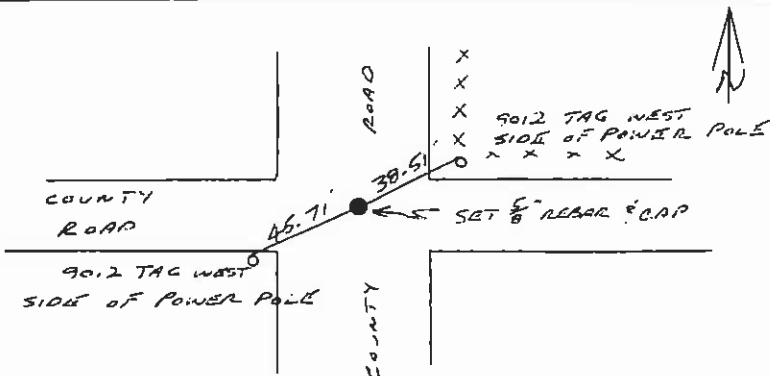
Signature Ground Party Chief

I, GREGORY B. MARENGO  
certify that this Corner Record correctly represents work performed by me or under my direction in compliance with the "Corner Recordation Act" (70-22-101, et seq., M.C.A.)

Gregory B. Marengo  
Signature of Surveyor & Seal

Date: 5/11/89 Reg. No. 9012 S

Employer: MARENGO SURVEYING



**SKETCH OF CORNER**

Office of Clerk and Recorder, County of Lake, Polson, MT. This "corner record" was filed for record on May 15, 1989 10:00 A.M. was noted on the cross-index plat and is assigned microfile #                     , in

0-1657 317953

Judy Ann Olsen, deputy  
County Official

Sec. 32
