

CERTIFIED LAND CORNER RECORDATION

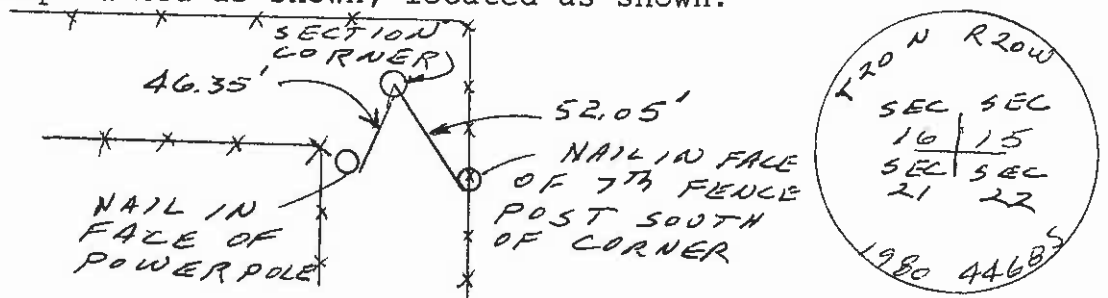
DESCRIPTION OF CORNER EVIDENCE FOUND, AND ORIGINAL RECORD (IF KNOWN)

Record: Set a slate stone, 16 x 8 x 8 ins., 11 ins. in the ground for cor. of secs. 15, 16, 21 and 22, marked 20 N on NE., and 20 W on SE. face; with 3 notches on S. and E. edges; dig pits, 18 x 18 x 12 ins. in each sec. 5 1/2 ft. dist., and raise a mound of earth, 4 ft. base, 2 ft. high, W. of cor.  
Found: No original evidence found.

DESCRIPTION OF MONUMENT AND ACCESSORIES ESTABLISHED TO PERPETUATE THE ORIGINAL LOCATION OF THIS CORNER:

Date of work: 6/80

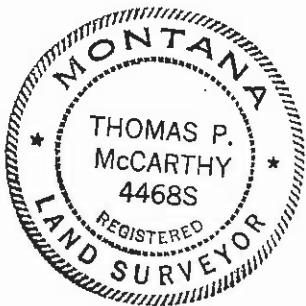
Set: By evaluation of land use lines, set a 2" x 24" iron pipe with a 2 1/2" alum cap marked as shown, located as shown.



SKETCH, WITH COURSE AND DISTANCE TO ADJACENT CORNERS IF DETERMINED IN THIS SURVEY. (MAY SKETCH OR PASTE REPRODUCTION ON REVERSE SIDE.)

SEE REVERSE SIDE

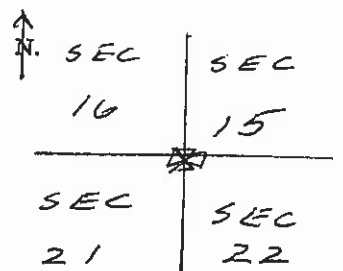
Surveyor's Seal



I, Paul Rossignol  
certify that the information shown herein is true and correct.  
*Paul Rossignol*  
Signature of Ground Party Chief

I, Thomas P. McCarthy  
certify that I have carefully performed or reviewed the work done on the diagrammed corner as reported on this recordation form and approve the same.  
*Thomas P. McCarthy*  
Signature of Surveyor

DIAGRAM OF CORNER:



☒ = Corner recorded on the sheet

44685  
Registration Number

Office of Clerk and Recorder, County of Lake, State of Montana

This "corner record" was filed for record on the 20th day of November 1980 at 4:14 P.M.

Witnessed and signed by No. 258557, in book No. C-1089

Ethel M. Harding, Lake County Clerk & Recorder  
By: *Sharon A. Wilson*, Deputy  
County Official

Cross Index No. N-13 T. 20 N R. 20 W Mer.