

INSTRUCTIONS

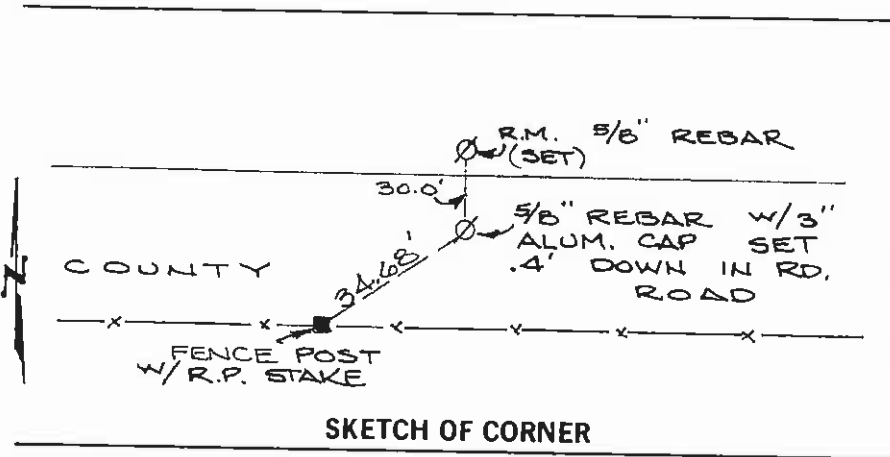
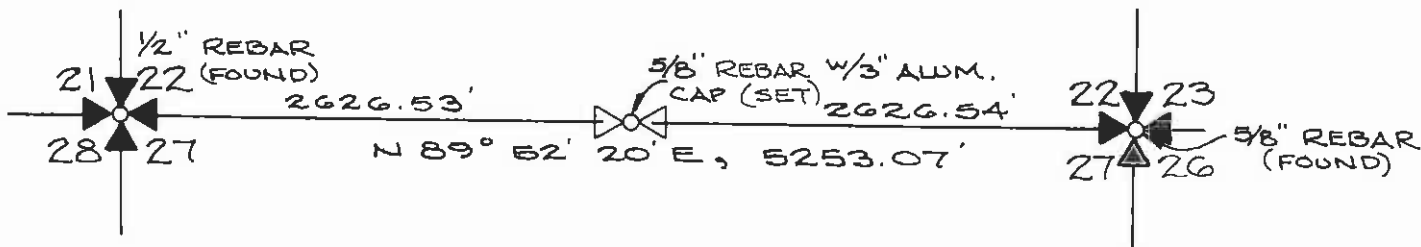
61-304796

1. Original and/or duplicate record used to evaluate the corner position.
2. Description of evidence found, note discrepancies in the record, state method of establishing lost or obliterated corners.
3. Description of monument and accessories set to perpetuate the corner position.
4. Sketch of corner, show all pertinent data which can best be shown in a sketch example, corner marking, topography files, position of accessories, etc.
5. Certification must be signed and sealed by Registered Land Surveyor in State of Montana.
6. Fill in Cross Index & Section Diagram at bottom of sheet.

CERTIFIED CORNER RECORDATION

Corner 1/4 CORNER 22 & 27 T. 20 N. R. 20 W. P.M.M. LAKE County

THE POSITION OF THIS CORNER FALLS IN THE CONSTRUCTION LIMITS OF THE EXISTING COUNTY ROAD. NO MONUMENT WAS FOUND AS IT WOULD HAVE BEEN DESTROYED BY CONSTRUCTION. THE CORNER POSITION WAS DETERMINED BY SINGLE PROPORTION BETWEEN FOUND MONUMENTS AS SHOWN BELOW.



SKETCH OF CORNER

CERTIFICATION

I, STEPHEN H. DAY
 certify the information shown herein is true and correct
 Signature Stephen H. Day
 Signature Ground Party Chief

I, DONALD H. WESTER
 certify that this Corner Record correctly represents work performed by me or under my direction in compliance with the "Corner Recordation Act" 70-22-101, et seq., M.D.A.
 Signature Donald H. Wester
 Signature of Surveyor & Seal

Date: 4-87 Reg. No. 41308

Employer: _____

Office of Clerk and Recorder, County of Lake, State of Montana. This "corner record" was filed for record on the 14th day of April, 1987, at 11:02 O'clock A.M. was noted on the cross-index plat and is assigned Merofile No. 304796, in

File: No. C-1529
 N/c

LORIN JACOBSON
 County Official
 By: Rafannell Cooper, Deputy

