

- INSTRUCTIONS
1. Original and/or subsequent record used to evaluate the corner position.
 2. Description of evidence; note discrepancies in the record, state method of establishing corners.
 3. Description of monument and accessories set to perpetuate the corner position.
 4. Sketch of corner, show all pertinent data which can best be shown in a sketch example, corner marking, topography ties, position of accessories, etc.
 5. Certification must be signed and sealed by Land Surveyor registered in the State of Montana.
 6. Fill in Cross Index & Section Diagram at bottom of sheet.

61. 404839

CERTIFIED CORNER RECORDATION

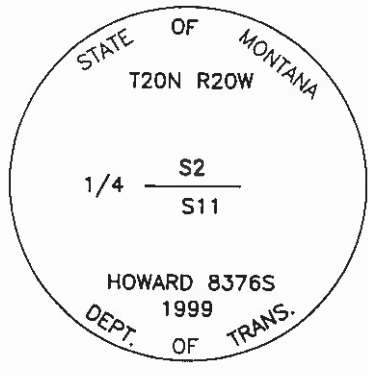
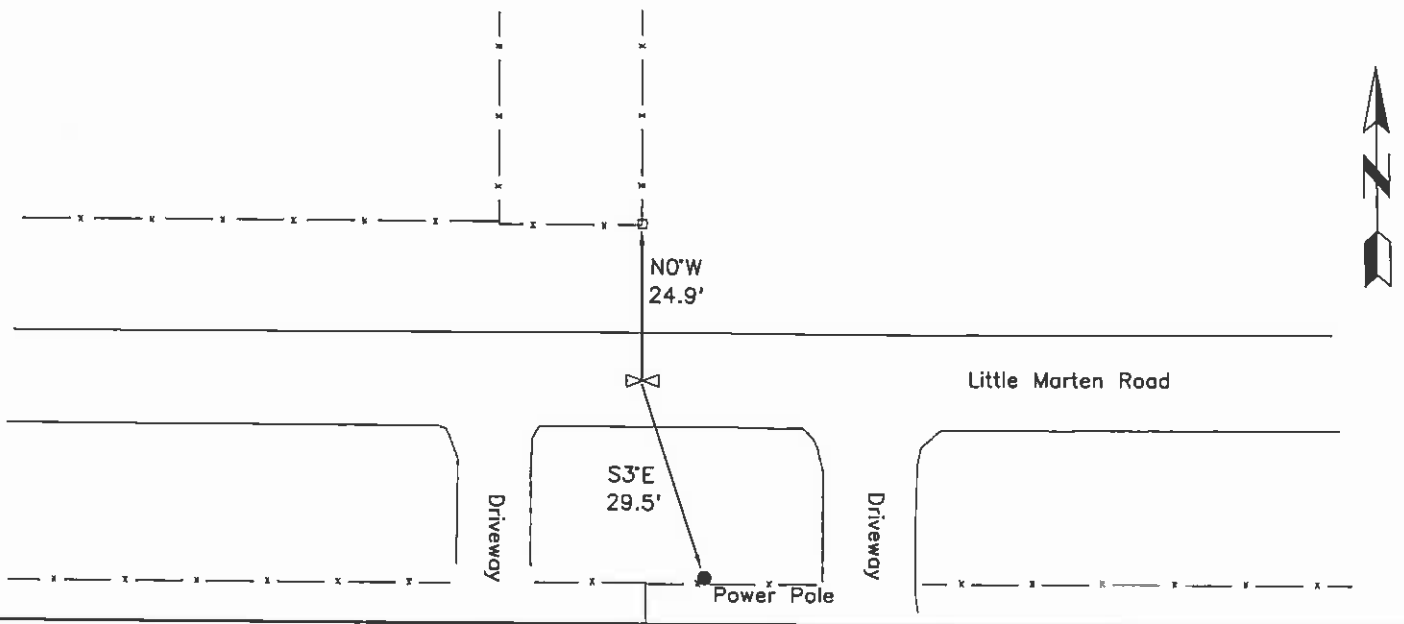
Corner: 1/4 Section Corner 2 & 11 T. 20N R. 20W P.M.M. Lake County

ORIGINAL RECORD: (1905 G.L.O.) Set a slate stone, 15x9x5 ins., 10 ins. in the ground marked 1/4 on N. face; dig pits, 18x18x12 ins., E. and W. of stone 3 ft. dist.; and raise a mound of earth, 3 1/2 ft. base, 1 1/2 ft. high, N. of corner.

SUBSEQUENT RECORD: See corner recordation #220794, set 5/8" rebar in county road.

EVIDENCE FOUND: Found a 5/8" rebar in Little Marten Road with fence lines projecting North and South of corner.

PERPETUATION: Set a 3 1/4" MDT aluminum cap on a 30" aluminum pipe 0.7' below the road surface in the position of the rebar, with the rebar buried inside. The cap is marked as shown in the sketch. From which;
 A power pole bears S3°E, 29.5' distant; with a MARLS tag.
 An 8"x8" fence post bears N0°E, 24.9' distant; with a MARLS tag.



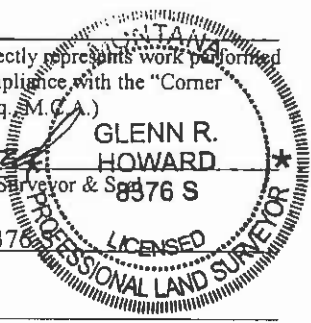
SKETCH OF CORNER

CERTIFICATION

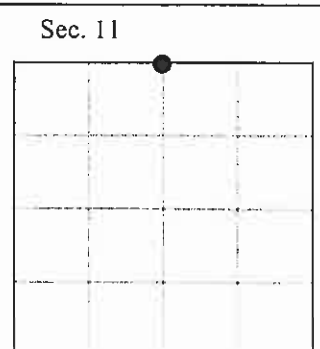
I, Kurt Luebke (13237LSI)
 certify the information shown herein is true and correct.
Kurt Luebke
 Signature Ground Party Chief

I, Glenn R. Howard
 certify that this Corner Record correctly represents work performed by me or under my direction in compliance with the "Corner Recordation Act" (70-22-101, et seq., M.C.A.)
Glenn R. Howard
 Signature of Surveyor & Seal

Date: 12-16-99 Reg. No. 8376
 Employer: DJ&A, P.C.



Office of Clerk and Recorder, County of Lake. This "corner record" was filed for record on DEC 17 1999 at 9:52 AM was noted on the cross index plat and is assigned page No. 404839, in book No. C2288 RUTH E. HODGES County Official



• - corner this sheet