

- INSTRUCTIONS
1. Original and/or subsequent record used to evaluate the corner position.
 2. Description of evidence corners, note discrepancies in the record, state method of establishing.
 3. Description of monument and accessories set to perpetuate the corner position.
 4. Sketch of corner, show all pertinent data which can best be shown in a sketch example, corner marking, topography ties, position of accessories, etc.
 5. Certification must be signed and sealed by Land Surveyor registered in the State of Montana.
 6. Fill in Cross Index & Section Diagram at bottom of sheet.

obliterated 61- 404850

CERTIFIED CORNER RECORDATION

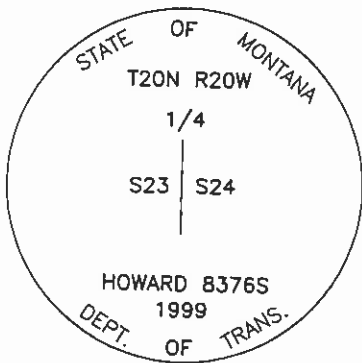
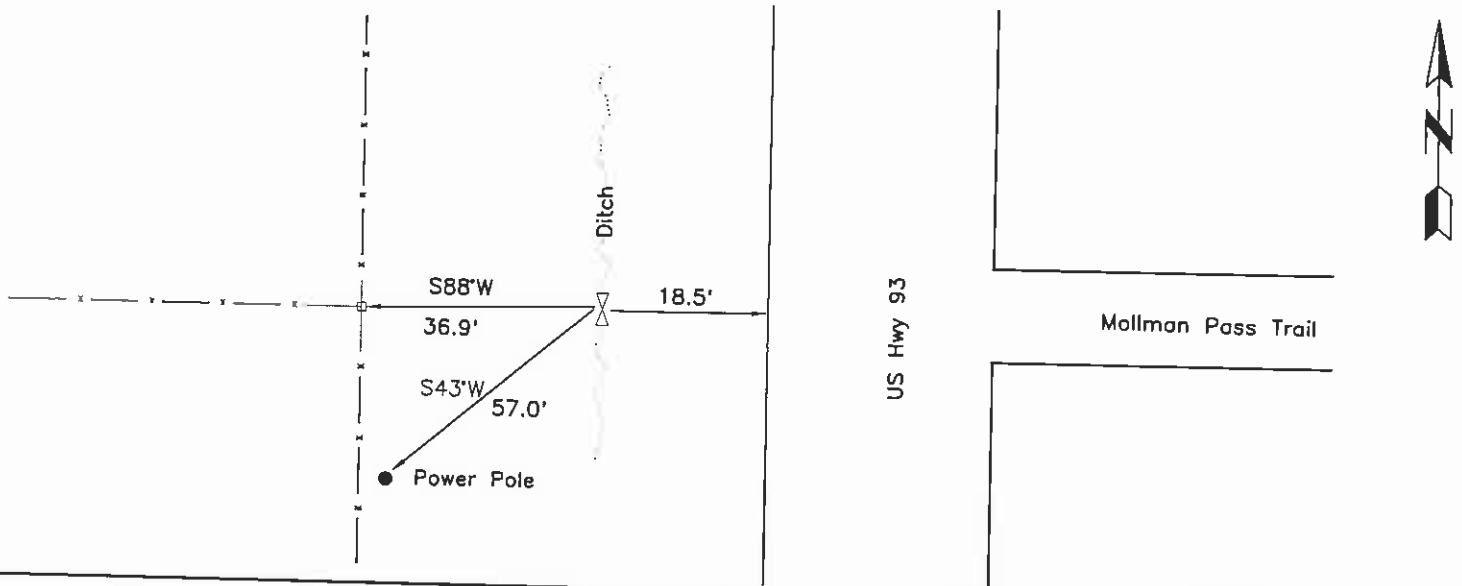
Corner: 1/4 Section Corner 23 & 24 T. 20N R. 20W P.M.M. Lake County

ORIGINAL RECORD: (1905 G.L.O.) Set a slate stone, 18x10x5 ins., 12 ins. in the ground marked 1/4 on W. face; dig pits 18x18x12 ins., N. and S. of stone, 3 ft. dist.; and raise a mound of earth, 3 1/2 ft. base, 1 1/2 ft. high, W. of corner.

SUBSEQUENT RECORD: See corner recordation #228371 by Christopher Balstad, set a 5/8" rebar with YPC.

EVIDENCE FOUND: Found a 5/8" rebar with a busted YPC as described by Balstad.

PERPETUATION: Set a 3 1/4" MDT aluminum cap on a 30" aluminum pipe in the position of the rebar, with rebar buried inside. The cap is marked as shown in the sketch. From which;
 A power pole bears S43°W, 57.0' distant; with a MARLS tag.
 A fence corner post bears S88°W, 36.9' distant; with a MARLS tag.
 A MDOH post with decal bears West, 0.5' distant.



SKETCH OF CORNER

CERTIFICATION
 I, Kurt Luebke (13237LSI)
 certify the information shown herein is true and correct.

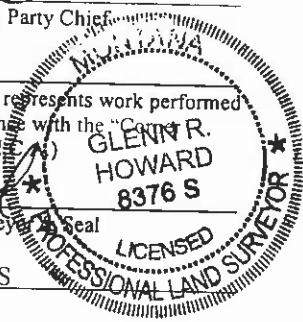
Kurt Luebke
 Signature Ground Party Chief

I, Glenn R. Howard
 certify that this Corner Record correctly represents work performed by me or under my direction in compliance with the "Corner Recordation Act" (70-22-101, et seq., M.C.A.)

Glenn R. Howard
 Signature of Surveyor Seal

Date: 12-16-99 Reg. No. 8376 S

Employer: DJ&A, P.C.



Office of Clerk and Recorder, County of Lake. This "corner

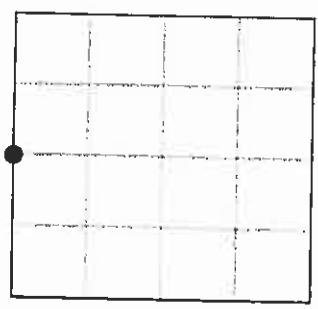
record" was filed for record on DEC 17 1999 10:05 A.M.

was noted on the cross index plat and is assigned page No. 404850, in

book No. C-2299 RUTH E. HODGES by Judy Murray
 County Official dep.

Cross Index No. P-21 T. 20N R. 20W P.M.M.

Sec. 24



•- corner this sheet

nc