

CERTIFIED LAND CORNER RECORDATION

DESCRIPTION OF CORNER EVIDENCE FOUND, AND ORIGINAL RECORD (IF KNOWN)

Record: A post $4\frac{1}{2}'$ long and a marked stone 12" in the ground. Stone marked $\frac{1}{4}$ on N face, dug pits $5\frac{1}{2}'$ east and west. Raised a mound of earth $1\frac{1}{2}'$ high and $3\frac{1}{2}'$ wide.

Found: No evidence of original monument.

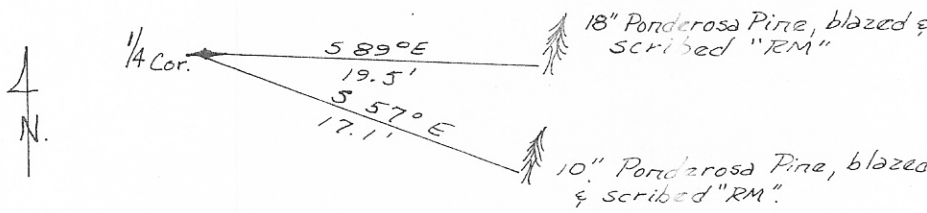
DESCRIPTION OF MONUMENT AND ACCESSORIES ESTABLISHED TO PERPETUATE THE ORIGINAL LOCATION OF THIS CORNER:

Date of work: 5/74

The true position of the $\frac{1}{4}$ corner common to Sec. 17 and 20 was determined by observation of Polaris and the lines of occupation were found to be within $00^{\circ}05'$ of record bearing. At a fence intersection on the line of occupation, I set a $1\frac{1}{2}" \times 24"$ pipe with a screw and washer cemented in the top and raised a mound of stone around the cor. This fence intersection was determined to be .83' different than record distance. A 18" Ponderosa Pine bears S89°E, 19.5'. A 10" Ponderosa Pine bears S57°E, 17.1'. Both trees blazed and scribed RM.

SKETCH, WITH COURSE AND DISTANCE TO ADJACENT CORNERS IF DETERMINED IN THIS SURVEY. (MAY SKETCH OR PASTE REPRODUCTION ON REVERSE SIDE.)

See Certificate of Survey #44.

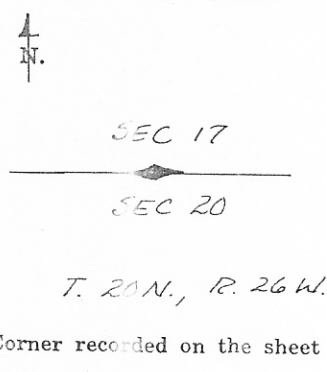


Surveyor's Seal

I, David R. Davis certify that the information shown herein is true and correct.

David R. Davis
Signature of Ground Party Chief

DIAGRAM OF CORNER:



I, Gordon E. Sorenson certify that I have carefully performed or reviewed the work done on the diagrammed corner as reported on this recordation form and approve the same.

Gordon E. Sorenson
Signature of Surveyor



2345ES
Registration Number

122083

11:30 a.m.

Office of Clerk and Recorder, County of Sanders

This "corner record" was filed for record on the 8 day of Oct, 1974, was noted on the cross-index plat and is assigned page No. 410, in book No. 1

Lizette Thayer
County Official