

INSTRUCTIONS

1. Original and/or subsequent record used to evaluate the corner position.
2. Description of evidence found, note discrepancies in the record, state method of establishing lost or obliterated corners.
3. Description of monument and accessories set to perpetuate the corner position.
4. Sketch of corner, show all pertinent data which can best be shown in a sketch example, corner marking, topography ties, position of accessories, etc.
5. Certification must be signed and sealed by Land Surveyor registered in the State of Montana.
6. Fill in Cross Index & Section Diagram at bottom of sheet.

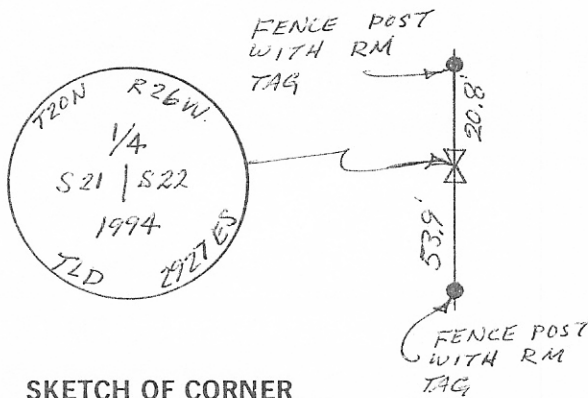
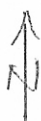
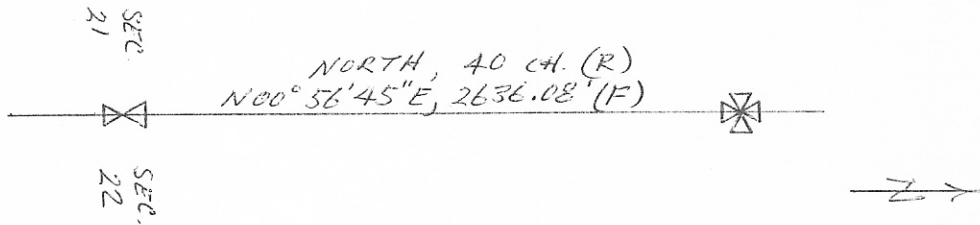
CERTIFIED CORNER RECORDATION

Corner 1/4 CORNER SEC. 21 & 22 T. 20 N R. 26 W P.M.M. SANDERS County

ORIGINAL RECORD - Set a post 4½ feet long 6 inches square with marked stone 12 inches in the ground for ¼ section corner marked ¼ s on west face.

EVIDENCE FOUND - 5/8" rebar (bent) in asphalt roadway. Accepted this as the best evidence for this corner. Bearing and distance tie to the northeast section corner fit reasonably well.

PERPETUATION - Replace the found 5/8" rebar with another 5/8" x 24" rebar with a 2½" aluminum cap at the same position. Placed RM tags on fence posts north and south of corner position.



SKETCH OF CORNER

CERTIFICATION

I, JAMES NELSON
certify the information shown herein is true and correct.

James Nelson
Signature Ground Party

I, TERRY L. DRUYVESTEN
certify that this Corner Record correctly represents the work performed by me or under my direction in compliance with the Corner Recordation Act, 1972-101, et seq., MCA.

Terry L. Druyvesten
Signature of Surveyor & Seal

Date: 6/94 Reg. No. 2927

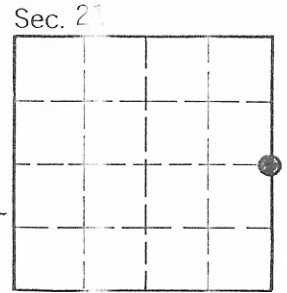
Employer: D J & A

Office of Clerk and Recorder, County of Sanders. This "corner record" was filed for record on July 29, 1994 at 11:16 am was noted on the cross-index plat and is assigned page No. 4 130, in book No. _____

Tellie Welliston By: Roni A. Wright
County Official Deputy

214257

Cross Index No. P - 13 T. 20 N R. 26 W P.M.M.



• - corner this sheet