

CERTIFIED LAND CORNER RECORDATION

DESCRIPTION OF CORNER EVIDENCE FOUND, AND ORIGINAL RECORD (IF KNOWN)

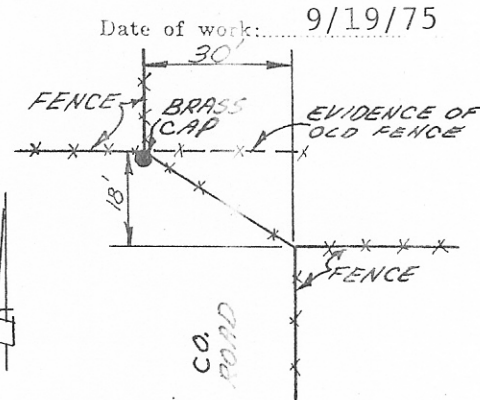
Record: Set a post 4½ ft. long, 6" square, with marked stone 12" in ground for ¼ Sec. corner marked ¼ on North face. Dug pits 18"x18"x12" E. & W. of post 5½ ft. distance, raised mound of earth 1½ ft. high, 3½ ft. base around it.

Found: No evidence of original corner found.

DESCRIPTION OF MONUMENT AND ACCESSORIES ESTABLISHED TO PERPETUATE THE ORIGINAL LOCATION OF THIS CORNER:

During previous surveys in this tier of Sections (see Certificates of Survey 49, 50-A, & 76). I have determined that an error exists in the original GLO Plat; therefore I accept existing old fence lines as the best evidence to the position of the obliterated original monument, rather than re-establishing by proportionate rules.

Set a 2" brass cap on 24" pipe marked:



SKETCH, WITH COURSE AND DISTANCE TO ADJACENT CORNERS IF DETERMINED IN THIS SURVEY. (MAY SKETCH OR PASTE REPRODUCTION ON REVERSE SIDE.)

See Certificate of Survey No. 134

Surveyor's Seal



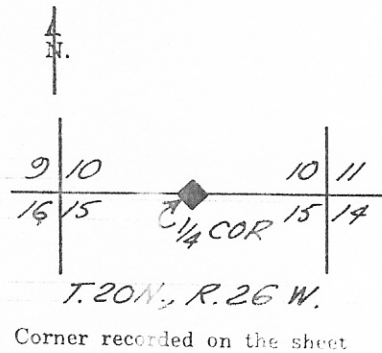
I, William W. Weikel certify that the information shown herein is true and correct.

William W. Weikel
Signature of Ground Party Chief

I, Gordon E. Sorenson certify that I have carefully performed or reviewed the work done on the diagrammed corner as reported on this recordation form and approve the same.

Gordon E. Sorenson
Signature of Surveyor

DIAGRAM OF CORNER:



2345ES
Registration Number

Office of Clerk and Recorder, County of Sanders S. 34 27 N. 137568

This "corner record" was filed for record on the 17 day of May 1976, was noted on the cross-index plat and is assigned page No. 562, in book No. 1
Linda Brown, Dep. Clerk
County Official