

CERTIFIED CORNER RECORDATION

Corner Section 13 & 24 T. 20N R. 26W, PMM Sanders County

RECORD:

GLO 1885

80 chains. Set a limestone 18"x8"x4" 12 in in the ground for corner to secs. 13, 18, 19 & 24 marked T20N S18 on NE, R25W S19 on SE, R26W S24 on SW, and S13 on NW faces. with 3 notches on N & S edges, raised a mound of stone alongside.

GLO 1888

80 chains Set a limestone 18x6x4 ins 12 ins in the ground for cor to secs 13, 18, 19 & 24 marked 4 nothes on N and 2 on S edges and raised a mound of stone alongside.

GLO 1903.

76.00 Chains - Intersect Horse Plains Guide Meridian 89 links N0°09'E of the corner of sections 13, 18, 19, & 24....
I change it to refer to sections 13 & 24 only...

1941 Highway R/W plans 87G indicate found corner give no description.

1994 COS 1437 "Found Stone"

FOUND:

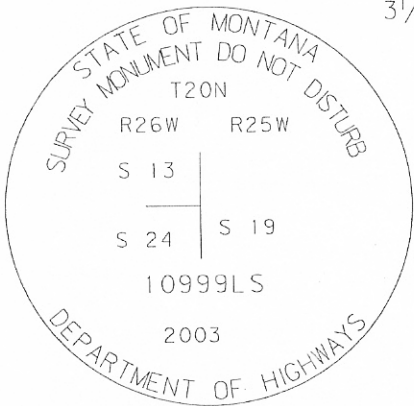
2003 I find a firmly set stone 24"x8"x4", 8" above ground, painted red, No marks visible, in amount of stone.
I set a 2.5"x30" aluminum pipe with 3/4" aluminum cap for corner.
Bury stone along north side of pipe

Set BT tag on RR tie fence corner bears S05°E 2.9'.

Set MDT Witness post with decal alongside.

See COS _____

See reverse side for diagram



3/4" AC.

SKETCH OF CORNER

252265

CORRECTION CORNER RECORDATION

FOR 251878, BK. 4 P. 974

CERTIFICATION

I, _____
certify the information shown herein is true and correct.

Signature of Ground Party Chief

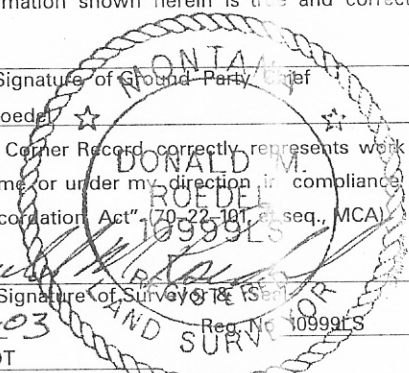
I, Donald M. Roedel ★
certify that this Corner Record correctly represents work performed by me or under my direction in compliance with the "Corner Recordation Act", 70-22-101, et seq., MCA.

Signature of Surveyor

Date: 8-26-03

Reg. No. 10999LS

Employer: MDT



Sec. 13

Office of Clerk and Recorder, County of SANDERS. This "corner record" was filed for record on August 29, 2003 @ 2:25 p.m.

was noted on the cross-index plat, and is assigned Page No. 4, in Book No. 984.
Pat Ingraham by [Signature]
County Official Deputy

● - Corner this sheet