

CERTIFIED LAND CORNER RECORDATION

201534

DESCRIPTION OF CORNER EVIDENCE FOUND, AND ORIGINAL RECORD (IF KNOWN)

NO EVIDENCE OF ORIGINAL DESTROYED BY ROAD CONST.

ORIGINAL RECORD - 40 1/2 chains set a granite stone, 24 x 9 x 8 ins., 18 ins. in the ground, for 1/4 corner, marked 1/4 on N. face, and raise a mound of stone, 2 ft. base, 12 ft. high, N. of corner. Pits impracticable.

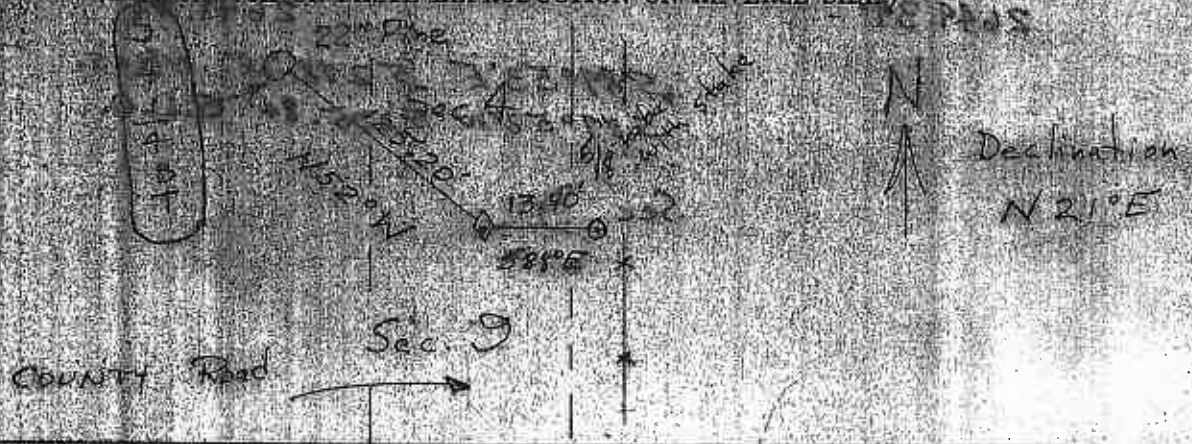
DESCRIPTION OF MONUMENT AND ACCESSORIES ESTABLISHED TO PERPETUATE THE ORIGINAL LOCATION OF THIS CORNER:

Date of work: *DEC. 4, 1971*

I set a 3/8" rebar for the 1/4 corner. It is buried in the road. I scribed a 22' line as shown. The east reference is a 50' rebar set in the road as shown.



SKETCH, WITH COURSE AND DISTANCE TO ADJACENT CORNERS IF DETERMINED IN THIS SURVEY. (MAX. SEARCH OR PASTE REPRODUCTION ON REVERSE SIDE)



Surveyor's Seal

I, _____
certify that the information shown herein is true and correct.

Signature of Ground Party Chief

I, *Christopher Balstad Jr.*
certify that I have carefully performed or reviewed the work done on the diagrammed corner as reported on this

DIAGRAM OF CORNER:



E-11