

INSTRUCTIONS

61-

394192

1. Original and/or subsequent record used to evaluate the corner position.
2. Description of evidence found, note discrepancies in the record, state method of establishing lost or obliterated corners.
3. Description of monument and accessories set to perpetuate the corner position.
4. Sketch of corner, show all pertinent data which can best be shown in a sketch example, corner marking, topography (ies, position of accessories, etc.
5. Certification must be signed and sealed by Land Surveyor registered in the State of Montana.
6. Fill in Cross Index & Section Diagram at bottom of sheet.

CERTIFIED CORNER RECORDATION

Corner S.W. Sec. Cor. Section 7 T. 21N. R. 20W. P.M.M. LAKE County

RECORD: from G.L.O. Field Notes, volume No. R0392, page "C", surveyed by George L. Elmer in December 1904. Set a trap rock, 24"x8"x7", 18" above the ground, raise mound of earth west of corner.

C.O.S. 5221 by Day (10997S), he sets this corner by single proportion from SW cor of Sec.18 and W1/4 of Sec.7.

Subdivision Plat of "Rollin' Buttes Tracts" by Breckenridge (11706LS), he establishes this corner by single proportion from SW cor of Sec.18 and W1/4 of Sec.6. He sets nothing.

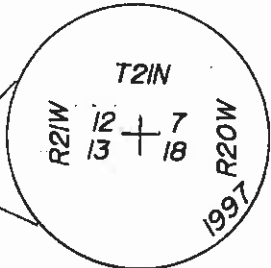
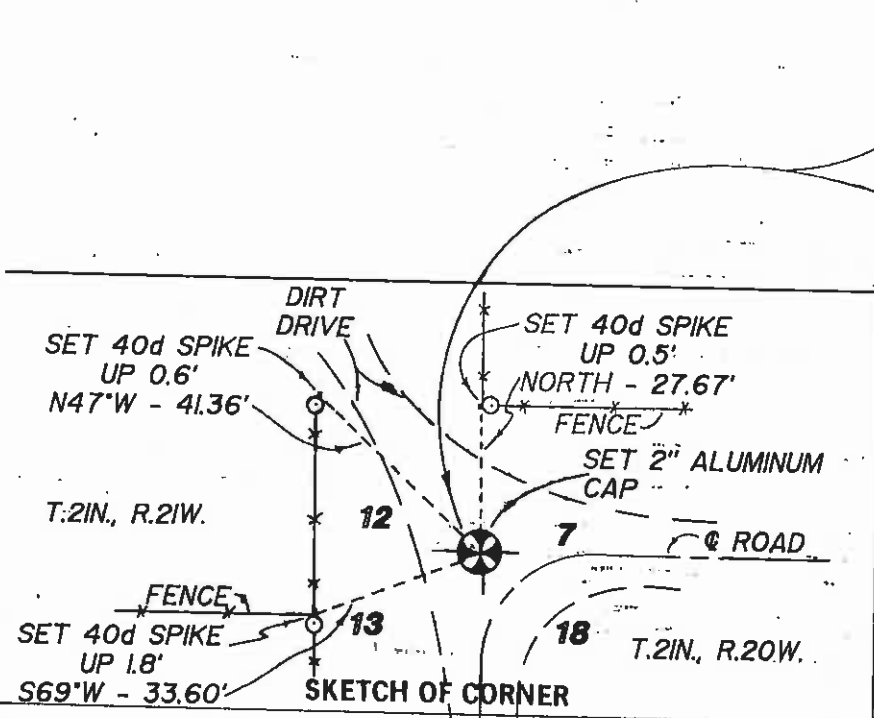
FOUND: No evidence of a corner found.

SET: I hold the easting position by accepting an ancient fenceline that extends to the north for 1/2 mile+. For northing position I proportion between the W1/4 of Sec.7 and an ancient fence extending east and west at the W1/4 of Sec.18. Set 5/8" rebar and 2" aluminum cap as marked below, from which:

- set a 40d spike up 0.5' on west edge of a corner fence post, bears North 27.67'
- set a 40d spike up 1.8' on north edge of a corner fence post, bears S69°W 33.60'
- set a 40d spike up 0.6' on northeast edge of a fence post, bears N47°W 41.36'

Used a -SILVA hand compass (declination 18° E)

See Subdivision Plat of "IRISH PLACE" file no. 387736



CERTIFICATION

I, DANIEL P. BRIEN certify the information shown herein is true and correct.

Signature Ground Party Chief

I, DANIEL P. BRIEN certify that this Corner Record correctly represents work performed by me or under my direction in compliance with the "Corner Recordation Act" (70-27-101, et seq., M.C.A.)

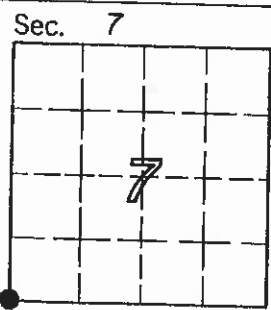
Signature of Surveyor & Seal

Date: 7/97 Reg. No. 7681S

Employer: HERSMAN LAND SURVEY

MONTANA REGISTERED SURVEYOR DANIEL P. BRIEN 7681S

Office of Clerk and Recorder, County of LAKE. This "corner record" was filed for record on OCT 29 1998 at 9:46 A.M. was noted on the cross-index plat and is assigned page No. 394192, in book No. by Vicki Rebe, Deputy RUTH E. HODGES County Official



Cross Index No. J-1 T. 21N. R. 20W. P.M.M.

C-2208