

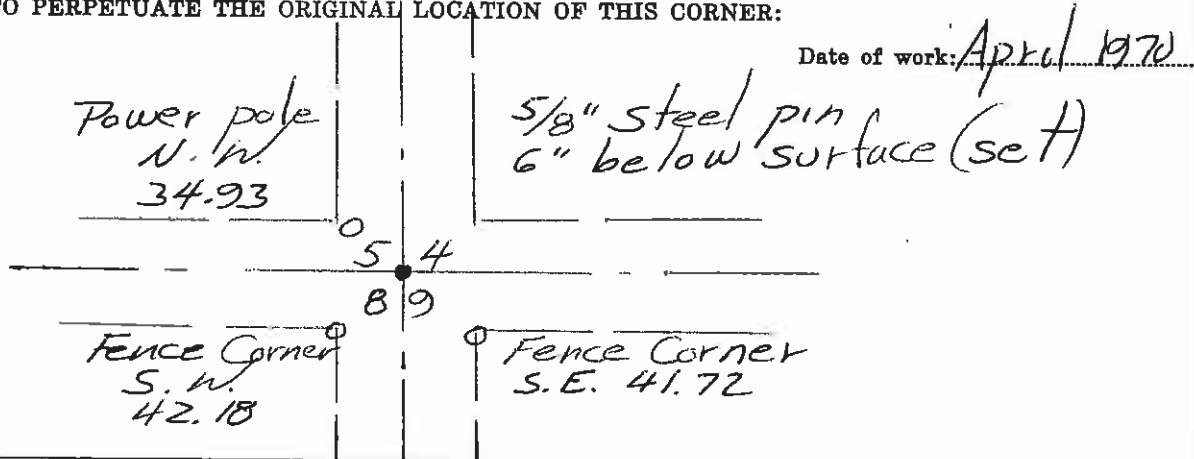
CERTIFIED LAND CORNER RECORDATION

193206

DESCRIPTION OF CORNER EVIDENCE FOUND, AND ORIGINAL RECORD (IF KNOWN)

No evidence of original
New corner set at intersection of ~~E~~
of roads.
Corner by usage and best evidence
as to location of original

DESCRIPTION OF MONUMENT AND ACCESSORIES ESTABLISHED
TO PERPETUATE THE ORIGINAL LOCATION OF THIS CORNER:



SKETCH, WITH COURSE AND DISTANCE TO ADJACENT CORNERS IF DETERMINED IN THIS SURVEY.
(MAY SKETCH OR PASTE REPRODUCTION ON REVERSE SIDE.)

Corner used for alignment
only. See Deed Exhibit No _____

Surveyor's Seal

I, _____
certify that the information shown herein is true and
correct.

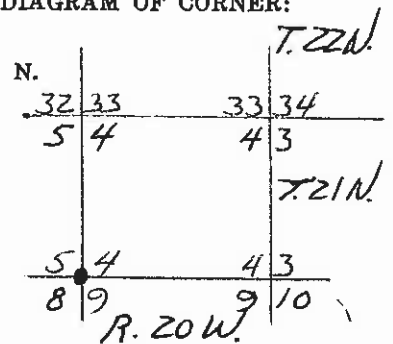
Signature of Ground Party Chief

I, HARRY P MEDLAND
certify that I have carefully performed or reviewed the
work done on the diagrammed corner as reported on this
recording form and approve the same.

Harry P Medland
Signature of Surveyor

2229.5
Registration Number

DIAGRAM OF CORNER:



● = Corner recorded on the sheet

Office of Clerk and Recorder, County of Lake, Montana

This "corner record" was filed for record on the 15 day of April 1970, was noted on the cross-index plat and is
assigned page No. 193206, in book No. C-99

ETHEL M. HARDING - CLERK & RECORDER
County Official

Cross Index No. E-9 T. 21 R. 20 Mer.

Bui Andersen-Peterson