

CERTIFIED LAND CORNER RECORDATION

DESCRIPTION OF CORNER EVIDENCE FOUND, AND ORIGINAL RECORD (IF KNOWN)

Found: A well set stone, flush with the ground, marked 1/2 on the south side, rocks piled around monument. Stone is on a west slope and east of a north-south fence. I referenced stone to a old concrete head gate, northwest corner is the chaining point.

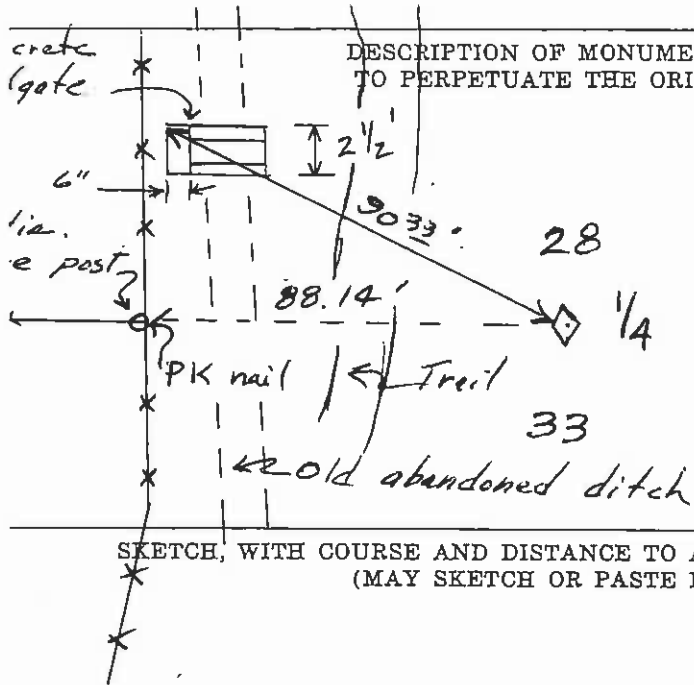
Date of Work 8/10/76

The

DESCRIPTION OF MONUMENT AND ACCESSORIES ESTABLISHED TO PERPETUATE THE ORIGINAL LOCATION OF THIS CORNER:

No scale

Date of work: 8/10/76



SKETCH, WITH COURSE AND DISTANCE TO ADJACENT CORNERS IF DETERMINED IN THIS SURVEY. (MAY SKETCH OR PASTE REPRODUCTION ON REVERSE SIDE.)

Sec. V-13

Surveyor's Seal

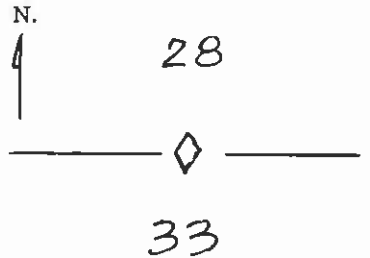
I, _____ certify that the information shown herein is true and correct.

Signature of Ground Party Chief

I, Christopher Balstad Jr. certify that I have carefully performed or reviewed the work done on the diagrammed corner as reported on this recordation form and approve the same.

Signature of Surveyor

DIAGRAM OF CORNER:



Corner recorded on the sheet

3322S
Registration Number

Office of Clerk and Recorder, County of Lake, State of Montana

This "corner record" was filed for record on the 13th day of August 1976 at 3:10 o'clock P. M.

signed page No. 228868, in book No. C-679 Ethel M. Harding, Lake County Clerk & Rec.

County Official By: A. Wilson, Dep.

Cross Index No. V-11 T. 21N R. 20W Mer.