

INSTRUCTIONS

1. Original and subsequent record used to evaluate the corner position.
2. Description of evidence found, note discrepancies in the record, state method of establishing lost or obliterated corners.
3. Description of monument and accessories set to perpetuate the corner position.
4. Sketch of corner, show all pertinent data which can best be shown in a sketch example, corner marking, topography lies, position of accessories, etc.
5. Certification must be signed and sealed by Land Surveyor registered in the State of Montana.
6. Fill in Cross Index & Section Diagram at bottom of sheet.

CERTIFIED CORNER RECORDATION

Corner 1/4 Corner S2|S1 T. 21N R. 20W P.M.M. Lake County

G.L.O. Record (Raymond C. Trumbull 1905):

Set a pine post, 3ft. long, 3 ins. sq., 24 ins. in the ground, for 1/4 sec. cor., marked 1/4 S2 on W. face, and 1 on E. face; from which
 A pine, 10 ins. dia., bears S. 49°30'E., 22 lks. dist., marked 1/4 S1 BT.
 A pine, 6 ins. dia., bears S. 54°30'W., 13 lks. dist., marked 1/4 S2 BT.

Subsequent Record (Christopher Balstad Jr. 1975):

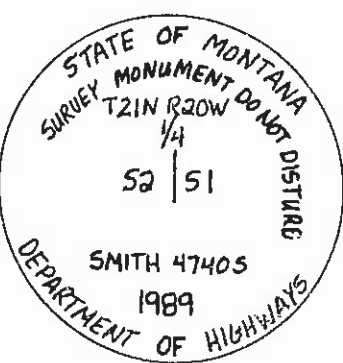
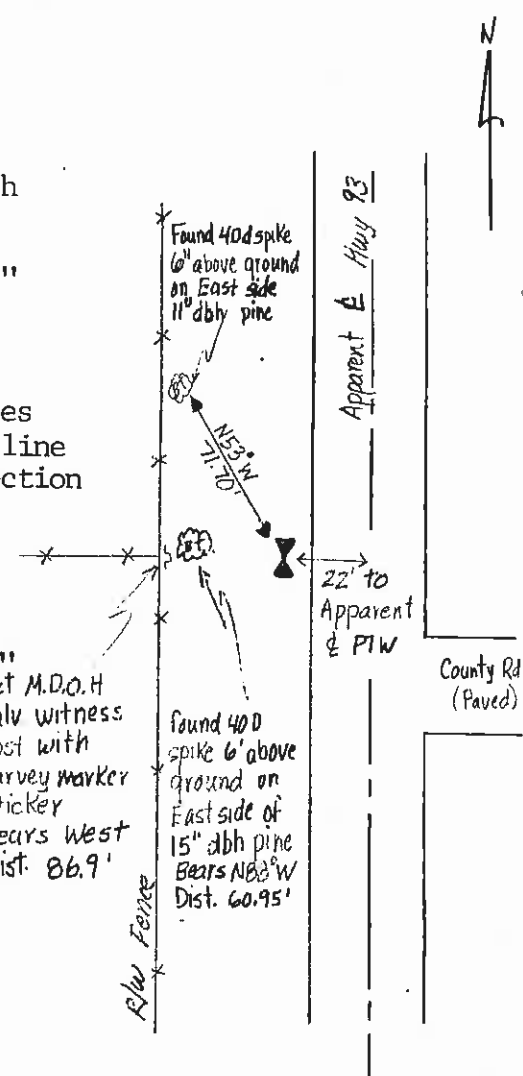
"Set 5/8" rebar & plastic cap, just west of pavement flush w/gnd."
 "Note: 1/4 set by projection of old fence from west and the product of a straight line between found R.R. spikes."

Evidence Found:

Found 5/8" rebar with yellow cap (illegible) and references as shown in diagram. Rebar found to be substantially on line between adjacent section corners and on as easterly projection of a fenceline running west.

Monumentation:

At location of 5/8" rebar, set a standard M.D.O.H. alum. monument, which consists of a 2 1/2"x30" long aluminum pipe with flared base and 3 1/2" dia. aluminum cap stamped as shown below. Top of cap is flush with ground with 5/8" rebar with cap placed inside monument.
 Set M.D.O.H. galv. witness post with survey marker sticker Bears West Dist. 86.9'



SKETCH OF CORNER

CERTIFICATION

I, David A. Holst
 certify the information shown herein is true and correct.
David A. Holst
 Signature Ground Party Chief

I, S. R. Smith
 certify that this Corner Record and all work performed by me or under my direction in compliance with the "Corner Recordation Act" (70-187) of the M.C.A.)
S. R. Smith
 Signature of Surveyor & Seal

Date: 11/89 Reg. No. 47405
 Employer: Smith Surveying Co.

Office of Clerk and Recorder, County of Lake, This "corner record" was filed for record on 11:55 AM JUL 31 '90 was noted on the cross-index plat and is assigned 325390, in

C-1758
N/C Judy Ann Allen deputy
 County Official
 Cross Index No C-71 T. 21N R. 20W P.M.M.
 Adopted July 1, 1981, Montana Board of Professional Engineers & Land Surveyors

