

## CERTIFIED CORNER RECORDATION

Corner SE Secs. 5 T. 21 N R. 29W P.M., MT Sanders County

I. 1889 G.L.O. Record by George R. Reeder: Set a post 4 ft. long 4 ins. square, 24 ins. in the ground for Cor. to secs 4,5,8&9. marked T 21N S4 onNE...R29W S9 on SE...S8 on SW...S5 on NW face with 5 notches on S and 4 on E edges from which:

Established four bearing trees:

- A pine 20 ins. diam., bears N26°E, 192 lks. (126.72') dist., mkd "T21N R29W S4 BT".
- A tamarack 16 ins. diam., bears S15°35'E, 49 lks.(32.34') dist., mkd "T21N R29W S9 BT".
- A pine 14 ins. diam, bears S28°20'W 51 lks. (53.46') dist., mkd " T21N R29W S 8 BT".
- A pine 20 ins. diam. bears N15°40'W, 115 lks. (75.90') dist., mkd " T21N R29W S 5 BT".

1982 H. Gene Warren: I found an iron pin with and aluminum cap set by Booth, 2968S  
Per Certified Land Corner Recordation vol. 2 page 236

II. No sign of 1889 post or BT's  
Found iron pin 6 ins. below top of asphalt road. (Church St.)  
Found 1" dia. rebar with yellow cap marked Warren bears East at 16.5 ft. dist. ( COS # 348)

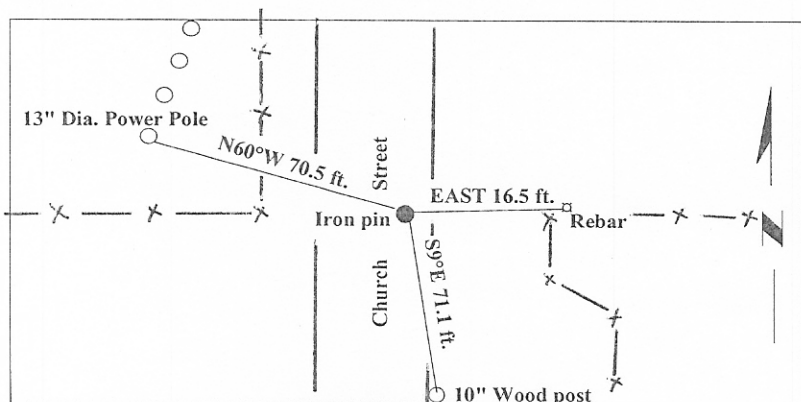
III. Measured north to the east 1/4 corner of section 5, measured west to the south 1/4 corner of section 5. Both my measurements, GLO distance and previous other surveys correspond. I accepted the found iron pin as a corner of local report being accepted and used by other past surveys

Established two RM's:

- Set a 60 d nail in 13" Power pole with BT sign N 60°W @ 70.5 ft. dist.
- Set a 60 d nail in 10" wood fence post with BT sign S 9° E @ 71.1 ft. dist.



Magnetic Declination: 17° East



**SKETCH OF CORNER**

CERTIFICATION

I, Eddo Fluri  
certify the information shown herein is true and correct.

*Eddo Fluri*

---

I, Ronald A. Pearson  
certify that this Corner Record correctly represents work performed by me or under my direction in compliance with the "Corner Recordation Act" (70-22-101, et seq., M.C.A.)

*Ronald A. Pearson*  
Signature of Surveyor & Seal

Date: 02/21/01

Reg. No.: 9008LS

Employer: U.S. FOREST SERVICE

Office of Clerk and Recorder, County of Sanders **241607**. This "corner record" was filed for record on 3-6-01 @ 10:40 A.M. and was noted on the cross-index plat and is assigned page No. \_\_\_\_\_, in book No. 733 Pat Ingraham by Pat Ingraham, Deputy County Official

