

INSTRUCTIONS

1. Original and/or subsequent record used to evaluate the corner position.
2. Description of evidence found, note discrepancies in the record, state method of establishing lost or obliterated corners.
3. Description of monument and accessories set to perpetuate the corner position.
4. Sketch of corner, show all pertinent data which can best be shown in a sketch example, corner marking, topography etc., position of accessories, etc.
5. Certification must be signed and sealed by Land Surveyor registered in the State of Montana.
6. Fill in Cross Index & Section Diagram at bottom of sheet.

CERTIFIED CORNER RECORDATION

Corner 1/4 Sec. Cor. 18 & 17 T. 22 N R. 19 W P.M.M. Lake County

ORIGINAL RECORD:

At the one-quarter corner common to Sections 17 and 18: Set a fir post, 3 ft. long, 3 ins. sq., 24 ins. in the ground, for 1/4 section. Cor., marked 1/4 S. 18 on W. face and 17 on E. face; from which a balsam, 7 ins. dia. bears S. 79 degrees E. 40 lks dist., marked 1/4 S 17 B T. A fir, 25 ins. dia., bears N. 79 degrees W., 40 lks. dist., marked 1/4 S. 18 B T. (William K. Trippet 1905).

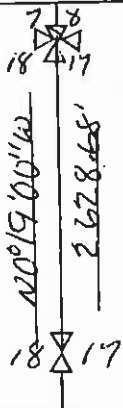
Subsequent Records: At the established 1/4 corner common to Secs. 17 and 18, T. 22 N., R. 19 W., P.M.M., which is a fir post 5 ft. long, 5 ins. square, 12 ins. above ground, marked and witnessed by the W.S.S. (R. F. Lincoln, 1917).

At the 1/4 corner of Sections 17 and 18, T. 22 N., R. 19W., P.M.M., I find 2 rebars 3" below the surface and approximately in the center of the gravel road. The 5/8 in. rebar was set by Lawrence J. McCarthy, I put a plastic cap stamped B.I.A., Flathead on McCarthy's rebar. (Christopher Balstad Jr., August 11, 1972).

The 1/4 sec. cor. of secs. 17 and 18, identical with AP No. B, Tract 37 monument by Lawrence J. Mc Carthy, Montana Registered Land Surveyor No. 1741 LS, with a steel reinforcement rod, 5/8 ins. diam., set 6 ins. below the surface of the county road, and perpetuated by Christopher Balstad, Montana Registered Land Surveyor No. 3322 LS, in 1972, with a plastic cap attached to the existing monument, that is now indecipherable. This position is accepted as the best available evidence of the original cor. position. Not remonumented. (Steve L. Toth, Bureau of Land Management, Cadastral Surveyor, 1995). Reference: Salish and Kootenai Tribal Document No. 203 29520, Flathead Indian Reservation, Montana.

Evidence Found: We find the monument as described above by Mr. Toth, and since this position was confirmed as being best evidence of the corner position by a Bureau of Land Management dependent resurvey of a portion of said Section 18, we accept this corner position.

MOMUMENT SET: As the position of said 1/4 corner falls in a roadbed scheduled for reconstruction, we reference the rebar with the B.I.A. plastic cap prior to reconstruction. After the road construction was completed, we set a 5/8" rebar, 24" long with a plastic cap marked C.S.& K. Tribes, 1826 S, in a standard monument box. The top of the box is flush with top surface of the final road pavement.



SKETCH OF CORNER



CERTIFICATION

I, _____ certify the information shown herein is true and correct.

Signature Ground Party Chief
Louis H. Maillet

I, _____ certify that this Corner Record correctly represents work performed by me or under my direction in compliance with the "Corner Recordation Act" 170-22-101, et seq., M.C.A.

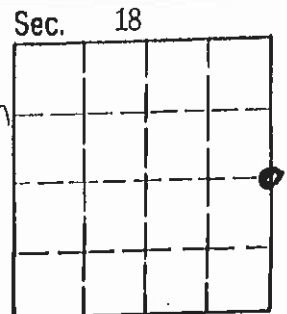
Signature of Surveyor & Seal
Louis H. Maillet

Date: 4/24/01 Reg. No. 1826 S

Employer: CSEK Tribes

Office of Clerk and Recorder, County of Lake. This "corner record" was filed for record on APR 24 2001 415193 10:44AM was noted on the cross-index plat and is assigned page No. _____, in book No. _____

RUTH E. HODGES by Ticki Pele
County Official Deputy



• - corner this sheet

Cross Index No. L - 5 T. 22 N R. 19 W P.M.M.

C-2380

File N/C