

**CERTIFIED CORNER RECORDATION**

Corner 1/4 7 | 8 T. 22N R. 19W P.M.M. Lake County

1905 G.L.O. Survey by William K. Trippet Book 4596 Page 53

"Set a slate stone, 20x9x7 ins., 15 ins. in the ground, for 1/4 sec. cor., marked 1/4 on W. face; dig pits, 18x18x12 ins., N. and S. of stone, 3 ft. dist.; and raise a mound of earth, 3 1/2 ft. base, 1 1/2 ft. high, W. of cor."

1975 Corner Recordation by Harry P. Medland, Book C-548

"R.R. Spike set on prod of fc. & CL of road"

2000 Remonumentation by S. R. Smith

I find a railroad spike as set by Harry P. Medland. At the position marked by the found railroad spike, I set a standard M.D.O.H monument, which consists of a 2 1/4 ins (5.715 cm) diameter, 30 ins (76.2 cm) long aluminum pipe with flared base and 3 1/4 ins (8.255 cm) diameter M.D.O.H aluminum cap, stamped as shown below. I place the found railroad spike inside the newly set monument. Top of aluminum cap is .2 ft (6 cm) below pavement surface, from which:

A railroad tie, with a 1 5/8 ins (3.33 cm) diameter brass disc, marked "SMITH 4740LS", set .2 ft (6 cm) above ground on the south side, bears N39°30'E 37.01 ft (11.281 m) distant.

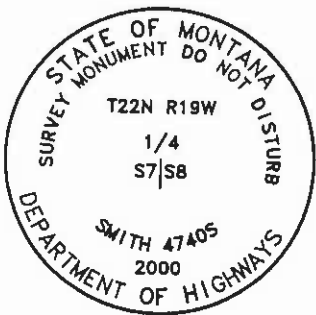
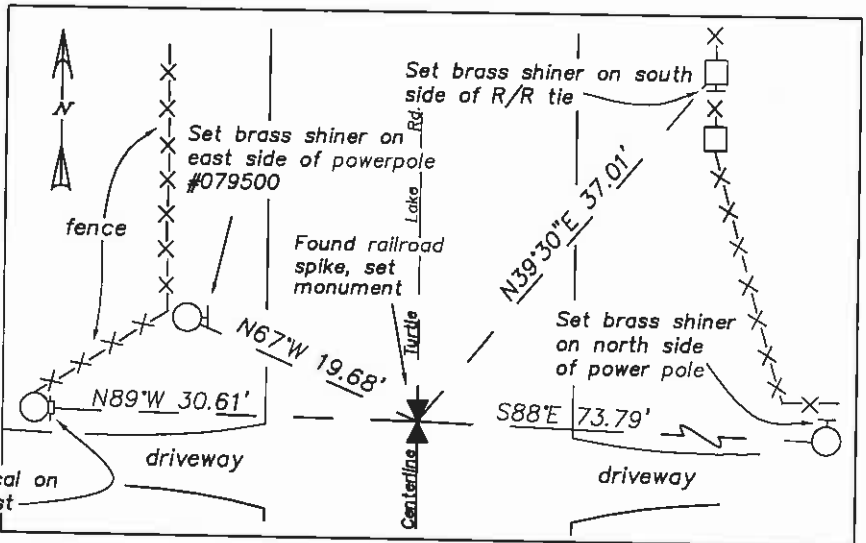
A Power pole, with a 1 5/8 ins (3.33 cm) diameter brass disc, marked "SMITH 4740LS", set 2 ft (60 cm) above ground on the north side, bears S88°E 73.79 ft (22.491 m) distant.

A 3 1/2 ft (106.68 cm) long galvanized steel witness post with M.D.T survey decal attached, set on the west side of an 8 ins (20.32) diameter post, bears N89°W 30.61 ft (9.330 m) distant.

A Power pole #079500, with a 1 5/8 ins (3.33 cm) diameter brass disc, marked "SMITH 4740LS", set 2 ft (61 cm) above ground on the east side, bears N67°W 19.68 ft (5.998 m) distant.

Bearings listed above in remonumentation section were measured with a hand compass, declination 18° East.

Refer to the Certificate of Survey filed in conjunction with this corner recordation for ties to adjacent section controlling corners.



SKETCH OF CORNER

**CERTIFICATION**

I, Robert K. Wunderlich, certify the information shown herein is true and correct.

*Robert K. Wunderlich*  
Signature of Ground Reference Chief

I, S. R. Smith, certify that this Corner Record correctly represents work performed by me or under my direction in compliance with the "Corner Recordation Act" (70-28-101, et seq., M.C.A.)

*S. R. Smith*  
Signature of Surveyor & Monumenter

Date: 12/31/00 Reg. No. 4740LS

Employer: Smith Surveying

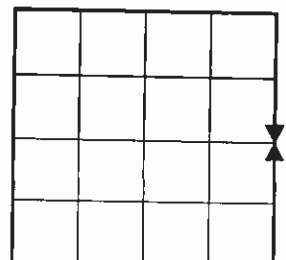
Office of Clerk and Recorder, County of Lake. This "corner record" was filed for record on JUN 04 2001 1:20 PM

was noted on the cross-index plat and is assigned page No. 416242, in book No. C-2389 RUTH E HODGES *County Official*

Cross Index No. G-5 T. 22N R. 19W P.M.M.

Adopted July 1, 1981, Montana Board of Professional Engineers & Land Surveyors

Sec. 7



corner this sheet  
stalling\polson-east\corners\113