

INSTRUCTIONS

1. Original and/or subsequent record used to evaluate the corner position.
2. Description of evidence found, note discrepancies in the record, state method of establishing lost or obliterated corners.
3. Description of monument and accessories set to perpetuate the corner position.
4. Sketch of corner, show all pertinent data which can best be shown in a sketch example, corner marking, topography ties, position of accessories, etc.
5. Certification must be signed and sealed by Land Surveyor registered in the State of Montana.
6. Fill in Cross Index & Section Diagram at bottom of sheet.

**CERTIFIED CORNER RECORDATION**

Corner S 1/4 Sec. 20 T. 22 N. R. 19 W. P.M.M. Lake County

ORIGINAL RECORD: Set a slate stone, 16x10x6 ins., 11 ins. in the ground, for 1/4 sec. cor., marked 1/4 on N. face; dig pits.

FOUND: A R.R. spike flush with paved roadway.

REMONUMENTATION: At corner position as determined by the railroad spike, I pulled the railroad spike and set in its place a 5/8" rebar, 1" below road surface, stamped "CS&KT RLS 9012", from which a power pole bears 8° at 25.48'.



CERTIFICATION

I, \_\_\_\_\_ certify the information shown herein is true and correct.

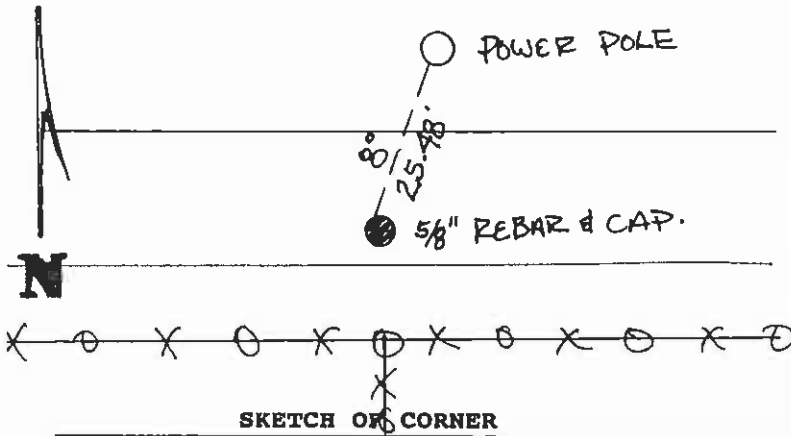
Signature Ground Party Chief

I, Gregory B. Marengo certify that this Corner Record correctly represents work performed by me or under my direction in compliance with the "Corner Recordation Act" (70-22-101, et seq., M.C.A.)

Gregory B. Marengo  
Signature of Surveyor & Seal

Date: 4/92 Reg. No. 9012

Employer: CS&KT



Office of Clerk and Recorder, County of Lake. This "corner

record" was filed for record on C-1886 at 10:17 AM JUN 23 '92

was noted on the cross-index plat and is assigned 339549, in

RUTH E. HODGES

County Official

Judy Ann Allen  
n/c dep

Cross Index No. R-7 T. 22 N. R. 19 W. PMM

