

- INSTRUCTIONS
- 61 - 303931
1. Original and or ... record used to evaluate the corner position
  2. Description of ... found, note discrepancies in the record, state method of est., ... last or obliterated corners
  3. Description of monument and accessories set to perpetuate the corner position
  4. Sketch of corner, show all pertinent data which can best be shown in a sketch example, corner marking, topography ties, position of accessories, etc
  5. Certification must be signed and sealed by Registered Land Surveyor in State of Montana
  6. Fill in Cross Index & Section Diagram at bottom of sheet

## CERTIFIED CORNER RECORDATION

Corner 1/4 32 | 33 T. 22 N. R. 19 W. P.M.M. Lake County

RECORD: (1905 GLO) A tamarack, 8 ins. dia., for 1/4 sec. cor. I mark 1/4 S 32 on W. side and 33 on E. side; from which:

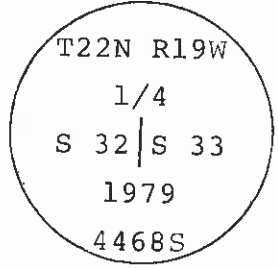
- A tamarack, 9 ins. dia., bears S. 84° E., 27 lks. dist., marked 1/4 S. 33 BT.
- A tamarack, 9 ins. dia., bears S 58° W., 21 lks. dist., marked 1/4 S 32 BT.

FOUND: No evidence of original monument or accessories found. All evidence destroyed by roads and farming.

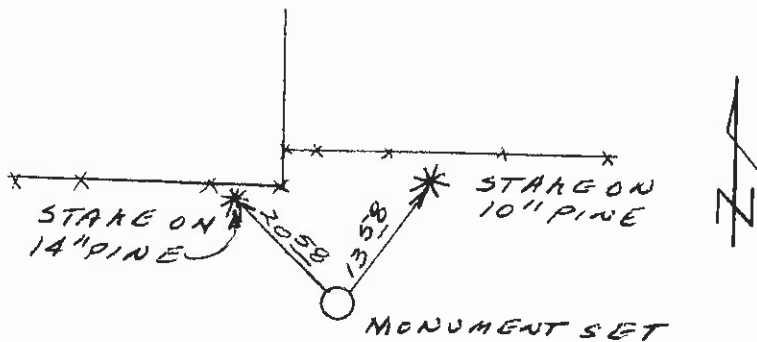
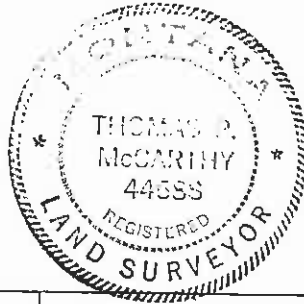
SET: At single proportion position between corners 1/2 mile to the north and 1/2 mile to the south, I set a 3"x24" iron pipe with a 3 1/2" brass cap stamped as shown, from which:

- A stake on a 14" pine bears northwesterly 20.58 feet.
- A stake on a 10" pine bears northeasterly 13.58 feet.

See reverse side for relationship to additional corners.



NOTE: The data on this corner form is based on surveys performed in 1979. Due to an oversight, a form was not filed at that time.



SKETCH OF CORNER

CERTIFICATION

I, \_\_\_\_\_, certify the information shown herein is true and correct.

Signature Ground Party Chief

I, Thomas P. McCarthy, certify that this Corner Record correctly represents work performed by me or under my direction in compliance with the "Corner Recordation Act" (70-22-101, et seq., M.D.A.)

Signature of Surveyor & Seal

Date: 2/87 Reg. No. 4468S

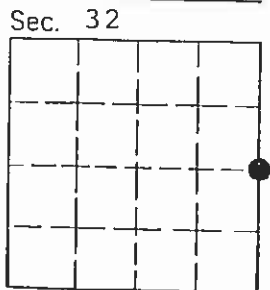
Employer: Sorenson & Company

Office of Clerk and Recorder, County of Lake. This "corner

record" was filed for record on the 3rd day of March, 1987, at 1:51 o'clock P.M. was noted on the cross-index plat and is assigned Microfile No. 303931, in

File No. C-1525  
N/A

**LORIN JACOBSON**  
County Official  
By: Bonanne Cooper, Deputy  
Cross Index No. X-9 T. 22 N. R. 19 W. P.M.M.



• corner this sheet