

CERTIFIED LAND CORNER RECORDATION

220787

DESCRIPTION OF CORNER EVIDENCE FOUND, AND ORIGINAL RECORD (IF KNOWN)

e reverse side and plat of Mission View Ranchos

DESCRIPTION OF MONUMENT AND ACCESSORIES ESTABLISHED TO PERPETUATE THE ORIGINAL LOCATION OF THIS CORNER:

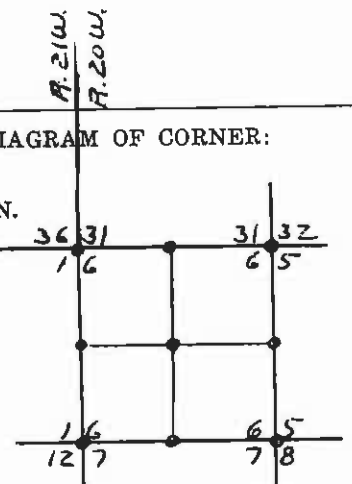
Date of work: MAY 1973

e reverse side and plat of Mission View Ranchos

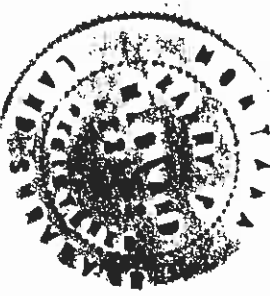
SKETCH, WITH COURSE AND DISTANCE TO ADJACENT CORNERS IF DETERMINED IN THIS SURVEY. (MAY SKETCH OR PASTE REPRODUCTION ON REVERSE SIDE.)

e reverse side and plat of Mission View Ranchos

DIAGRAM OF CORNER:



Surveyor's Seal



I, \_\_\_\_\_ certify that the information shown herein is true and correct.

Signature of Ground Party Chief

I, HARRY P. MEDLAND certify that I have carefully performed or reviewed the work done on the diagrammed corner as reported on this recordation form and approve the same.

Harry P. Medland  
Signature of Surveyor

22295  
Registration Number

Office of Clerk and Recorder, County of Lake, State of Montana  
is "corner record" was filed for record on the 18th day of February, 1975, at 12:01 o'clock P. M.  
signed Micro. 220787, in book No. C-546, by Ethel M. Harding, Clerk & Recorder  
County Official By Janice Wiers Dep.  
Cross Index No. A-1,345 C-1,345 E-1,345 T. 22 N. R. 20 W. Mer.

