

CERTIFIED LAND CORNER RECORDATION

220787

DESCRIPTION OF CORNER EVIDENCE FOUND, AND ORIGINAL RECORD (IF KNOWN)

e reverse side and plat of Mission View Ranchos

DESCRIPTION OF MONUMENT AND ACCESSORIES ESTABLISHED TO PERPETUATE THE ORIGINAL LOCATION OF THIS CORNER:

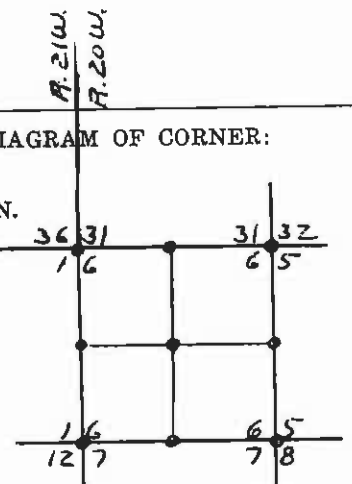
Date of work: MAY 1973

e reverse side and plat of Mission View Ranchos

SKETCH, WITH COURSE AND DISTANCE TO ADJACENT CORNERS IF DETERMINED IN THIS SURVEY. (MAY SKETCH OR PASTE REPRODUCTION ON REVERSE SIDE.)

e reverse side and plat of Mission View Ranchos

DIAGRAM OF CORNER:



Surveyor's Seal

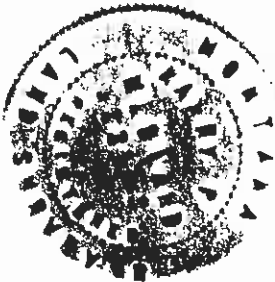
I, _____ certify that the information shown herein is true and correct.

Signature of Ground Party Chief

I, HARRY P. MEDLAND certify that I have carefully performed or reviewed the work done on the diagrammed corner as reported on this recordation form and approve the same.

Harry P. Medland Signature of Surveyor

22295 Registration Number



Office of Clerk and Recorder, County of Lake, State of Montana at 12:01 o'clock P. M. is "corner record" was filed for record on the 18th day of February 1975, was noted on the cross-index plat and is signed Micro. 220787 in book No. C-546 Ethel M. Harding, Clerk & Recorder County Official By [Signature] Dep. Cross Index No. A-1,345 C-1,345 T. 22 N. R. 20 W. Mer. E-1,345

