

INSTRUCTIONS

411747

1. Original and/or subsequent record used to evaluate the corner position.
2. Description of evidence found, note discrepancies in the record, state method of establishing lost or obliterated corners
3. Description of monument and accessories set to perpetuate the corner position.
4. Sketch of corner, show all pertinent data which can best be shown in a sketch example, corner marking, topography ties, position of accessories, etc.
5. Certification must be signed and sealed by Land Surveyor registered in the State of Montana.
6. Fill in Cross Index & Section Diagram at bottom of sheet.

CERTIFIED CORNER RECORDATION

Corner S. 1/4 cor. sec. 29 T. 22N R. 20W P.M.M. LAKE County

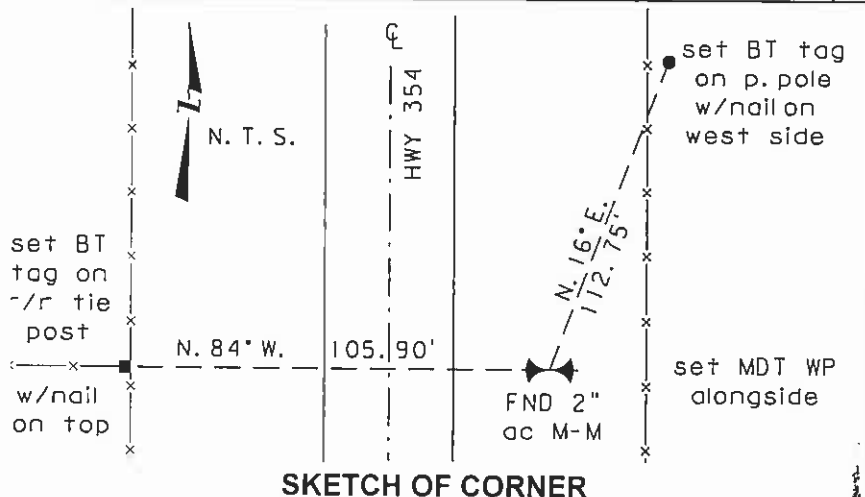
- RECORD:**
- 1905, G.L.O. - Set a slate stone, 18x8x8 ins., 12ins. in the ground for 1/4 sec. cor., marked 1/4 on N. face; dig pits, 18x18x12ins., E. and W. of stone, 3ft. dist.; and raise a mound of earth, 3 1/2ft. base, 1 1/2 ft. high, N. of cor.
 - 1989, C.O.S. #4298, - by Wester #4130S, found rebar in co. road.
 - 1992, C.O.S. #4730 - by Marengo #9012S, for CS & KT, set 5/8" rebar & cap stamped CS&KT RLS 9012.
 - 1992, C.C.R. - by Marengo #9012S, for CS &KT. Found railroad spike. Remonumented w/ a 5/8" rebar w/ cap "CS & KT RLS 9012" at position of spike. Set two new bearing tags.
 - 1993, C.O.S. #4927, - by Wester #4130S, Found rebar w/ cap CS & KT.

- FOUND:**
- A 2" aluminum cap by Morrison-Maierle, marked as shown, flush with ground, halfway between pavement edge and fence line, on east side of HWY #354.

- SET:**
- A bearing tag on a power pole #n/a, set nail on west side, bears N.16°E., 112.75'.
 - A bearing tag on a railroad tie fence post, set a nail on top, bears N.84°W., 105.90'.
 - A witness post with MDT decal alongside.



Magnetic declination 20° east. Used Silva compass & measured w/ total station.



CERTIFICATION

I, Ronald T. Gardner certify the information shown herein is true and correct.

Signature of Ground Party Chief
DONALD M. ROEDEL

I, Donald M. Roedel certify that this Corner Record correctly represents work performed by me or under my direction in compliance with the "Corner Recordation Act" (70-22-107, et seq., MCA)

Signature of Surveyor & Seal
Donald M. Roedel

Date: 10-3-2000 Reg. No. 10999LS

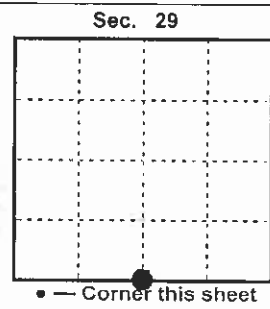
Employer: MDT

SKETCH OF CORNER

Office of Clerk and Recorder, County of Lake This "corner record" was filed for record on 411747 at 2:33 pm OCT 31 2000 was noted on the cross-index plat, and is assigned Page No. _____, in Book No. _____

C-2368

Ruth E. Hodges
RUTH E. HODGES
County Official



Cross Index No. V 7 T. 22N R. 20W, PMM