

INSTRUCTIONS

1. Original and/or subsequent record used to evaluate the corner position.
2. Description of evidence found, note discrepancies in the record, state method of establishing lost or obliterated corners.
3. Description of monument and accessories set to perpetuate the corner position.
4. Sketch of corner, show all pertinent data which can best be shown in a sketch example, corner marking, topography ties, position of accessories, etc.
5. Certification must be signed and sealed by Land Surveyor registered in the State of Montana.
6. Fill in Cross Index & Section Diagram at bottom of sheet.

CERTIFIED CORNER RECORDATION

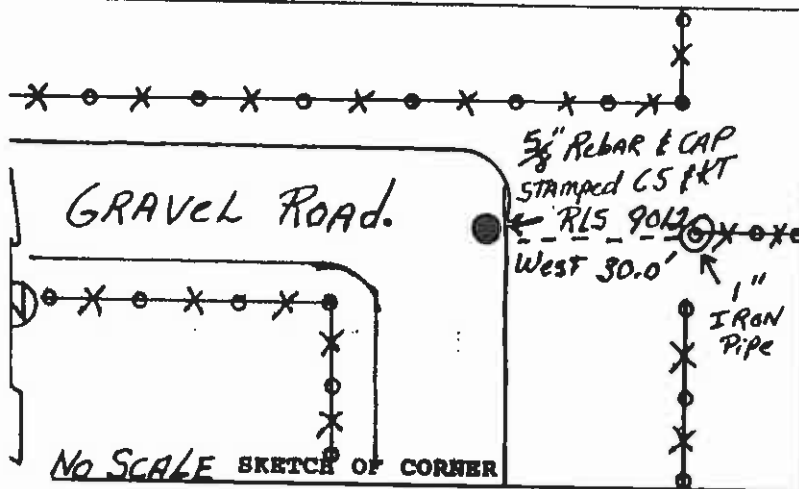
Corner E 1/4 Sec. 32 T. 22 N. R. 20 W. P.M.M. Lake County

ORIGINAL RECORD: Set a sand stone, 16x8x5 ins., 11 ins. in the ground for 1/4 sec. cor., marked 1/4 on W. face; dig pits, 18x18x12 ins., N. and S. of stone, 3 ft. dist.; and raise a mound of earth, 3 1/2 ft. base, 1 1/2 ft. high, W. of cor.

FOUND: A 1" iron pipe, set 1' flush with ground. This 1" pipe is believed to be the reference monument to the 1/4 corner.

MONUMENTATION: At a point 30' west of the 1" pipe and on a straight line from C 1/4 thru the found reference monument, I set a 5/8" rebar with cap stamped "CS&KT RLS 9012." See sketch below.

See COS #4730 for Section Control Data



CERTIFICATION

I, \_\_\_\_\_, certify the information shown herein is true and correct.

Signature Ground Party - Chief

I, Gregory B. Marengo, certify that this Corner Record correctly represents work performed by me or under my direction in compliance with the "Corner Recordation Act" (70-22-101, et seq., M.C.A.)

Signature of Surveyor & Seal

Date: 9/92 Reg. No. 9012

Employer: CS&KT

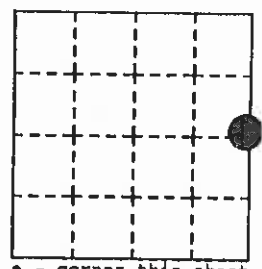
Sec. 32

Office of Clerk and Recorder, County of Lake. This "corner record" was filed for record on MAR 9 '93 at 11:16 Am was noted on the cross-index plat and is assigned C-1936, in

345748

RUTH E. HODGES Paula A Holle

County Official



o - corner this sheet

Cross Index No. X-9 T. 22 N. R. 20 W. PMM

n/c