

INSTRUCTIONS

1. Original and subsequent record used to evaluate the corner position.
2. Description of evidence found, note discrepancies in the record, state method of establishing lost or obliterated corners.
3. Description of monument and accessories set to perpetuate the corner position.
4. Sketch of corner, show all pertinent data which can best be shown in a sketch example, corner marking, topography ties, position of accessories, etc.
5. Certification must be signed and sealed by Land Surveyor registered in the State of Montana.
6. Fill in Cross Index & Section Diagram at bottom of sheet.

61- 325410

CERTIFIED CORNER RECORDATION

Corner S3 | S2 Section Corner S10 | S11 T. 22N R. 20W P.M.M. Lake County

G.L.O. Record (William K. Trippet 1905):

Set a sand stone, 12x12x10 ins., 8 ins. in the ground, for cor. of secs. 2,3,10, and 11, marked with 5 notches on S. and 2 notches on E. edge; dig pits, 18x18x12 ins., in each sec., 5½ ft. dist., and raise a mound of earth, 4 ft. base, 2 ft. high, W. of cor.

Subsequent Record (Christopher Balstad Jr. 1974):

Corner record shows: "Found the section corner of sections 2,3,10 and 11, T22N, R20W. This corner filed on by Donald R. Ranger 424 ES on Jan 23, 1964. The monument found is a ¾" pipe set inside a 4 inch pipe. I referenced this corner as shown below."

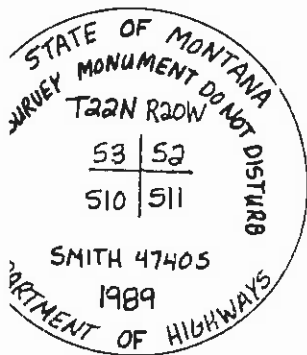
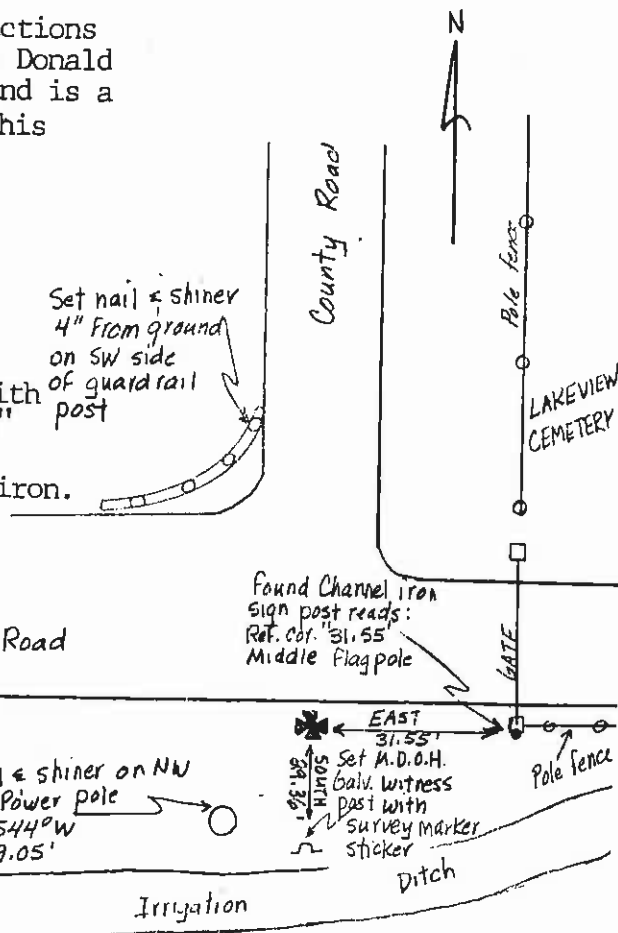
5" channel iron Easterly 31.55'
Stake on pole Southwesterly 65.17'

Evidence Found:

Found 5/8" rebar with yellow cap "MEDLAND 2229S" with references as shown in diagram. No evidence of ¾" pipe per Balstad corner recordation. Medland's pin fits the reference to the 5" channel iron.

Monumentation:

At location of 5/8" rebar with yellow cap, set a standard M.D.O.H. monument, which consists of a 2¼"x30" long aluminum pipe with flared base and ¾" dia. aluminum cap stamped as shown below. Top of cap is flush with ground. Placed 5/8" rebar inside of monument. Set M.D.O.H. galv. witness post with survey marker sticker and references as shown in the diagram.



SKETCH OF CORNER

CERTIFICATION

I, David A. Holst
certify the information shown herein is true and correct.
David A. Holst
Signature Ground Party Chief

I, S. R. Smith
certify that this Corner Record correctly represents work performed by me or under my direction in compliance with the "Corner Recordation Act" (70-22-101) of the M.C.A.
S. R. Smith
Signature of Surveyor of & Seal

Date 11/89 Reg. No. 4740S
Employer: Smith Surveying Co.

Office of Clerk and Recorder, County of Lake, This "corner record" was filed for record on 12:16 pm JUL 31 '90 was noted on the cross-index plat and is assigned 325410, in C-1778

N/c County Official Judy Ann Gales deputy
Cross Index No. E-17 T. 22N R. 20W P.M.M.
Adopted July 1, 1981, Montana Board of Professional Engineers & Land Surveyors

