

CERTIFIED CORNER RECORDATION

Corner 1/4 2 | 1 T. 22N R. 20W P.M.M. Lake County

1904 G.L.O. Survey by William K. Trippet Book 4597 Page 10

"Set a silica stone, 18x12x10 ins., 12 ins. in the ground, for 1/4 sec. cor., marked 1/4 on W. face; dig pits, 18x18x12 ins., N. and S. of stone, 3 ft. dist.; and raise a mound of earth, 3 1/2 ft. base, 1 1/2 ft. high, W. of cor."

2000 Remonumentation by S. R. Smith

I find no remains of the original corner or its accessories. I find a 2 ins (5.08 cm) diameter brass cap, 1 ft (.30 m) west of fence, on a 3/4 ins (1.905 cm) diameter pipe. Cap stamped as shown below. I find no record of how position was determined, but accept it as being in harmony with other adjacent corners. Top of cap is 1 ins (2.54 cm) above ground and 1 ft (30.48 cm) west of N-S fence, from which:

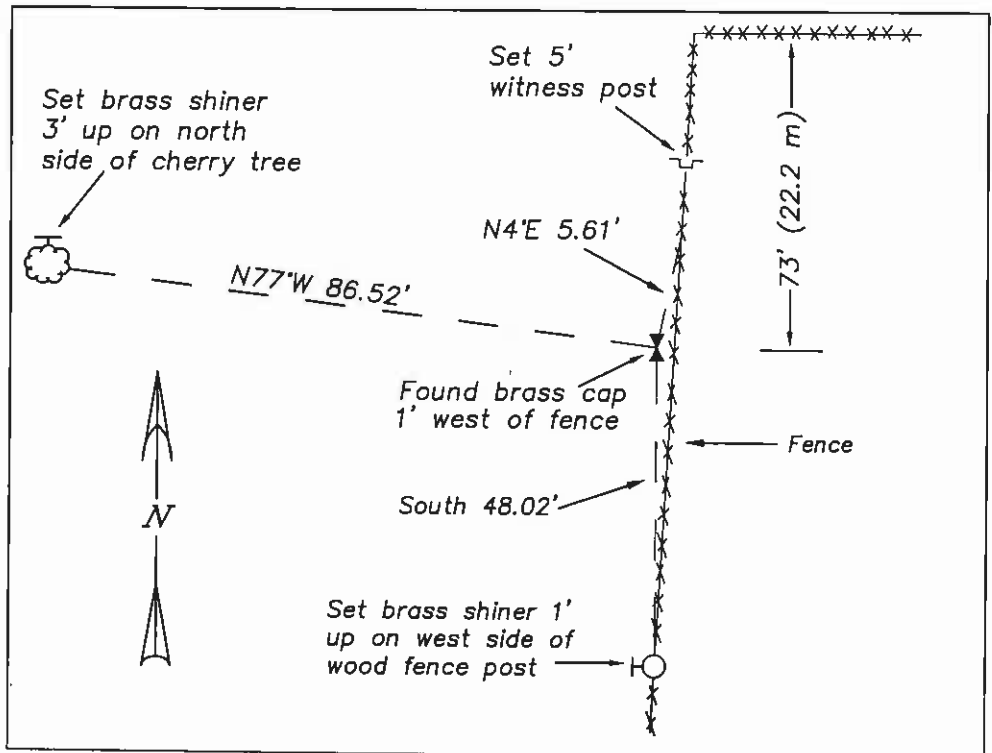
A 5 ft (1.524 m) long galvanized steel witness post set with M.D.T survey decal attached, bears N4°E 5.61 ft (1.710 m) distant.

A wood fence post, with a 1 5/16 ins (3.33 cm) diameter brass disc, marked "SMITH 4740LS", set 1 ft (30 cm) above ground on the west side, bears South 48.02 ft (14.636 m) distant.

A cherry tree, with a 1 5/16 ins (3.33 cm) diameter brass disc, marked "SMITH 4740LS", set 3 ft (91 cm) above ground on the north side, bears N77°W 86.52 ft (26.371 m) distant.

Bearings listed above in remonumentation section were measured with a hand compass, declination 18° East.

Refer to the Certificate of Survey filed in conjunction with this corner recordation for ties to adjacent section controlling corners.



Cap marked incorrectly, Should be R20W

SKETCH OF CORNER

CERTIFICATION

I, Robert K. Wunderlich
certify the information shown herein is true and correct.

Robert K. Wunderlich
Signature Ground Party Chief

I, S. R. Smith
certify that this Corner Record conforms to the requirements of the "Corner Recordation Act" (70-22-101), and was performed by me or under my direction in compliance with the "Corner Recordation Act" (70-22-101).

S. R. Smith
Signature of Surveyor & Spd

Date: 12/31/00 Reg. No. 4740LS
Employer: Smith Surveying

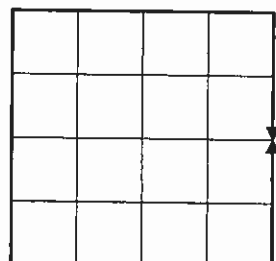
Office of Clerk and Recorder, County of Lake. This "corner record" was filed for record on JUN 04 2001 1:21 pm

was noted on the cross-index plat and is assigned page No. 416243, in book No. C-2390 RUTH E. HODGES County Official

Cross Index No. C-21 T. 22N R. 20W P.M.M.

Adopted July 1, 1981, Montana Board of Professional Engineers & Land Surveyors

Sec. 2



corner this sheet
stalling\polson-east\cornerrecA\105