

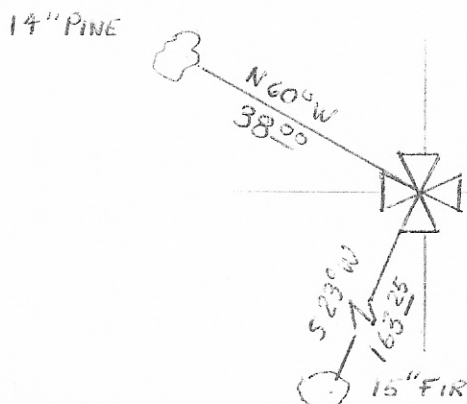
**CERTIFIED LAND CORNER RECORDATION**

DESCRIPTION OF CORNER EVIDENCE FOUND, AND ORIGINAL RECORD (IF KNOWN)

RECORD: SET 4' X 5" POST 24" DEEP  
 A TAM. 30" IN DIA. BEARS N 54° 10' E 28 LKS  
 A FIR 14" IN DIA. BEARS S 80° 15' E 17 LKS  
 A FIR 12" IN DIA. BEARS S 8° 45' W 48 LKS  
 A TAM. 38" IN DIA. BEARS N 75° 35' W 12 LKS

FOUND: REMAINS OF ORIGINAL POST &  
 BADLY BURNT STUMPS OF ORIGINAL B.T.'S IN NE & NW QUADRANTS

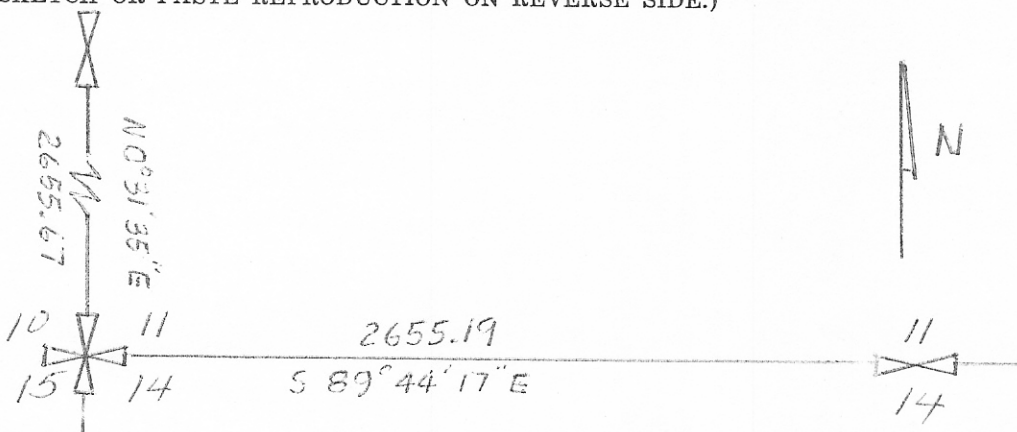
DESCRIPTION OF MONUMENT AND ACCESSORIES ESTABLISHED  
 TO PERPETUATE THE ORIGINAL LOCATION OF THIS CORNER:



Date of work: 5-16-74

SET 2 1/2" X 36" PIPE W/ BRASS CAP  
 TREES INDICATED ARE BLAZED ON FACE

SKETCH, WITH COURSE AND DISTANCE TO ADJACENT CORNERS IF DETERMINED IN THIS SURVEY.  
 (MAY SKETCH OR PASTE REPRODUCTION ON REVERSE SIDE.)



Surveyor's Seal

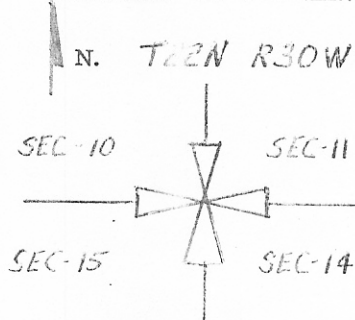
I, Tom Wiggan  
 certify that the information shown herein is true and correct.

Tom Wiggan  
 Signature of Ground Party Chief

I, William E. Wheeler  
 certify that I have carefully performed or reviewed the work done on the diagrammed corner as reported on this recordation form and approve the same.

William E. Wheeler  
 Signature of Surveyor

DIAGRAM OF CORNER:



= Corner recorded on the sheet

132193

394-ES  
 Registration Number

Office of Clerk and Recorder, County of Landers at 10:49 a.m.

This "corner record" was filed for record on the 12th day of July, 1974, was noted on the cross-index plat and is assigned page No. 329, in book No. 1

Doris Thught, Clerk & Rec.  
 County Official by  Evelyn Aldrich  
 R. 30 Mer.