

CERTIFIED LAND CORNER RECORDATION

72-1244

DESCRIPTION OF CORNER EVIDENCE FOUND, AND ORIGINAL RECORD (IF KNOWN)

At the Section corner common to Sections 2, 3, 10 & 11, Township 22 North, Range 30 West, Sanders County, Montana.

RECORD: Set post 4' long, 4" square 24" in the ground for corner to Sections 2, 3, 10 & 11 marked T22N S 2 on NE R30W S11 on SE S10 on SW S3 on NW face with 5 notches on South & 2 notches on East edges.

- A fir 6" N.55°E., 20 links
- A fir 8" S.70 1/2°E., 56 links
- A pine 14", S.61 3/4°W., 11 links
- A Tamarack 18" N.54 3/4°W., 42 links

WE FIND: 2-BT stumps, 2-stump crowns, pile rock & a hub & tack.

DESCRIPTION OF MONUMENT AND ACCESSORIES ESTABLISHED TO PERPETUATE THE ORIGINAL LOCATION OF THIS CORNER:

10/20/72

Date of work: .....

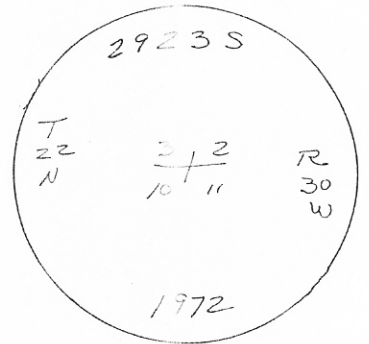
WE ESTABLISH this corner by ties from original GLO notes.

TO PERPETUATE this corner we set a 24" copper weld monument mounded with rock and establish the following reference monuments:

- A 8" Pine bears S.38°00'E., 21.55 feet
- A 12" Pine bears S.44°30'W., 28.00 feet
- A 5" bears N.42°00'W., 14.10 feet
- A 8" Pine bears N.48°30'E., 17.7 feet

Variance used 20°

SKETCH, WITH COURSE AND DISTANCE TO ADJACENT CORNERS IF DETERMINED IN THIS SURVEY. (MAY SKETCH OR PASTE REPRODUCTION ON REVERSE SIDE.)



Surveyor's Seal



ELDEN INABNIT

I, \_\_\_\_\_ certify that the information shown herein is true and correct.

*[Handwritten Signature]*  
Signature of Ground Party Chief

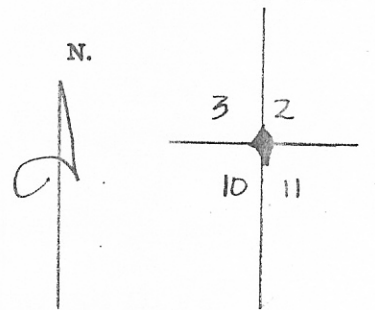
I, RICHARD A. AINSWORTH, certify that I have carefully performed or reviewed the work done on the diagrammed corner as reported on this recordation form and approve the same.

*[Handwritten Signature]*  
Signature of Surveyor

2923S

AINSWORTH & ASSOCIATES Registration Number

DIAGRAM OF CORNER:



◆ = Corner recorded on the sheet

Office of Clerk and Recorder, County of Sanders 8-16-77 140382

This "corner record" was filed for record on the 4<sup>th</sup> day of March 1977, was not d on the cross-index plat and is assigned page No. 668, in book No. 1

*[Handwritten Signature]*  
County Official

*[Handwritten Signature]*