

INSTRUCTIONS

Q:CO-STD/152  
Created 4/8/92

1. Original d/or subsequent record used to evaluate the corner position.
2. Description of evidence found, note discrepancies in the record, state method of establishing lost or obliterated corners.
3. Description of monument and accessories set to perpetuate the corner position.
4. Sketch of corner, show all pertinent data which can best be shown in a sketch example, corner marking, topography ties, position of accessories,
5. Certification must be signed and sealed by Land Surveyor registered in the State of Montana.
6. Fill in Cross Index & Section Diagram at bottom of sheet.

CERTIFIED CORNER RECORDATION

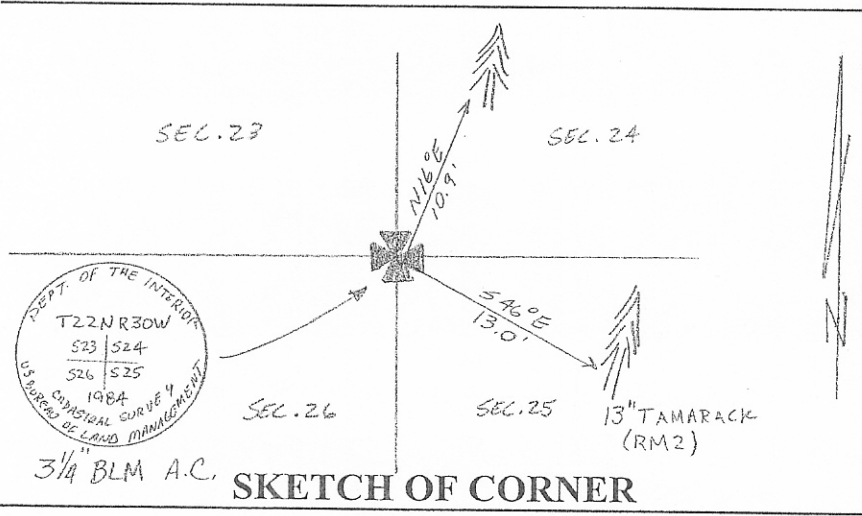
Corner Cor. of Secs. 23, 24, 25 & 26 T. 22N R. 30 West P.M.M. Sanders County

RECORD

- GLO 1889** Set a post, 4 ft. long, 5" square, 12" in the ground, for the cor. of secs.23, 24, 25, & 26, marked T22N S24 on the NE, R30W S25 on the SE, S26 on the SW, S23 on the NW and 2 notches on the S. and 1 notch on the E. edges. Dug pits 18"x18"x12" in each section 5.5 ft. from the corner and raised a mound of earth 2 ft. high, 4.5 ft. around the post.
- 1976, 534ES** Found steel pipe by others, with (3) old staubs, flat on 4 sides and (4) pits with (1) mound. From which:  
A W.W.P. brass cap bears S 89°46'59" W, 41.18 ft.  
A W.W.P. brass cap bears S 88°37'16" E, 42.68 ft.
- 1984, BLM** Group No. 721. Found iron pipe of unknown origin, 1" diameter, 3 ft. long, with pits, NE, SE, and NW of corner. At the corner point, set a 2 1/2" x 30" aluminum post, 24" in the ground, with an aluminum cap. Bury pipe inside of monument and raise a 24" collar of stone around the monument. Corner is situated in the remains of an old railroad bed.
- 1988, 2734S** COS 929. Found iron pipe.
- 1992, 2734S** COS 1197. Found iron pipe.

FOUND

- 2001** Found 2 1/2" diameter aluminum pipe, firmly set, projecting 8" above ground, with a 3 1/4" BLM aluminum cap set in a 24" diameter collar of stones.  
From which (2) new BT's:  
A 13" Tamarack, bears N 16° E, 10.9 ft., marked: RM1.  
A 13" Tamarack, bears S 46° E, 13.0 ft., marked: RM2.
- Blaze, paint, and tag new bearing trees.
- See Certificate of Survey on file at the Sanders County Courthouse.



CERTIFICATION

I, Kevin Cassidy  
certify the information shown herein is true and correct.

*Kevin Cassidy*  
Signature Ground Party Chief

I, R.A. Ainsworth  
certify that this Corner Record correctly represents work performed by me or under my direction in compliance with the "Corner Recordation Act" (70-22-101, et seq. M.C.A.)

*RICHARD A. AINSWORTH*  
Signature of Surveyor & Seal  
2923 S

Date: 8/01 Reg. No. 2923S

Employer: Professional Consultants, Inc.

254619 BOOK: 5 CORNER REC PAGE: 28 Pages: 0

STATE OF MONTANA SANDERS COUNTY

RECORDED: 03/02/2004 9:18 KOI: COR RECORD

PAT INGRAHAM CLERK AND RECORDER

FEE: \$0.00 BY: *Pat Ingraham*

TO: PROFESSIONAL CONSULTANTS, INC. P.O. BOX 1750, MISSOULA, MT

Sec.25
