

CERTIFIED LAND CORNER RECORDATION 61-258003

DESCRIPTION OF CORNER EVIDENCE FOUND, AND ORIGINAL RECORD (IF KNOWN)

FOUND: A well set 1/4 stone and one live bearing tree with scribing visible and the cut stump of a bearing tree with scribing visible.

RECORD: 40 chains. Set a slate stone 16x7x7 ins., 11 ins. in the ground, for 1/4 sec. corner marked 1/4 on west face; from which

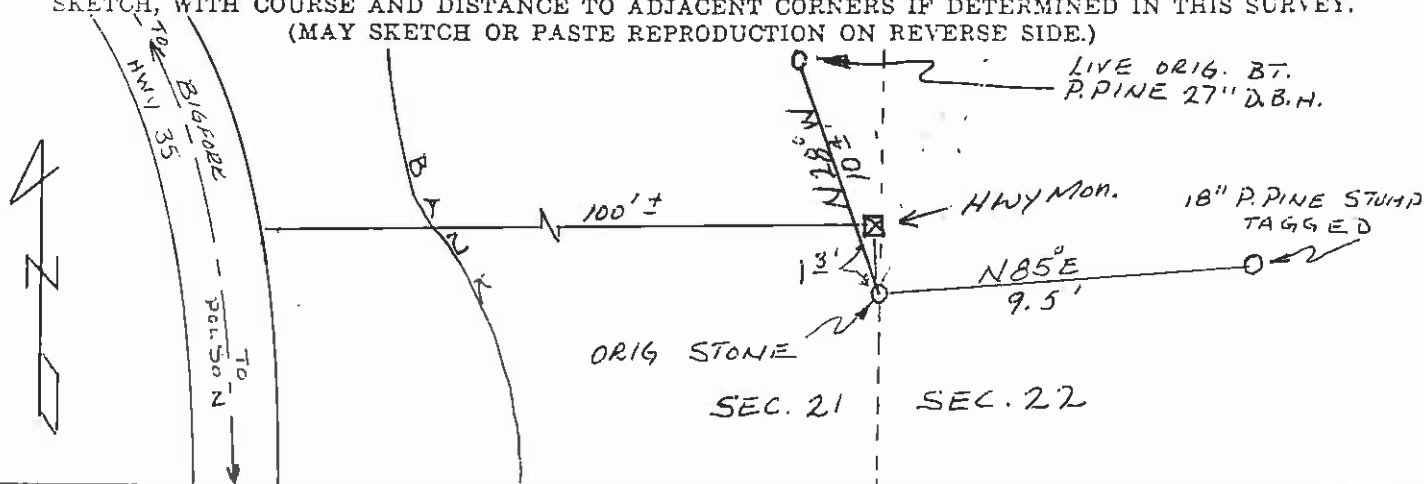
A TAMARACK, 12 ins. distance bears S68°E 15 lks. distant marked 1/4 S22BT.

A PINE, 16 ins. diam., bears N32°W 18 links distant marked 1/4 S21BT.

DESCRIPTION OF MONUMENT AND ACCESSORIES ESTABLISHED TO PERPETUATE THE ORIGINAL LOCATION OF THIS CORNER:

Date of work: 9-13-80

SKETCH, WITH COURSE AND DISTANCE TO ADJACENT CORNERS IF DETERMINED IN THIS SURVEY. (MAY SKETCH OR PASTE REPRODUCTION ON REVERSE SIDE.)



Surveyor's Seal



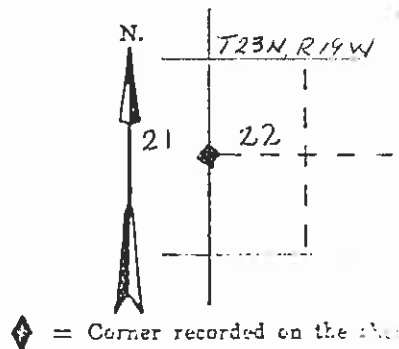
I, \_\_\_\_\_ certify that the information shown herein is true and correct.

Signature of Ground Party Chief

I, Christopher Balstad Jr. certify that I have carefully performed or reviewed the work done on the diagrammed corner as reported on this recordation form and approve the same.

Signature of Christopher Balstad Jr. and Signature of Surveyor

DIAGRAM OF CORNER:



33228 Registration Number

Office of Clerk and Recorder, County of Lake, State of Montana

This "corner record" was filed for record on the 20th day of October 1980, at 2:09 o'clock P.M.

assigned No. 258003, in book No. C-1083.

ETHEL M. HARDING, CLERK & RECORDER By: [Signature] Deputy County Official