

INSTRUCTIONS

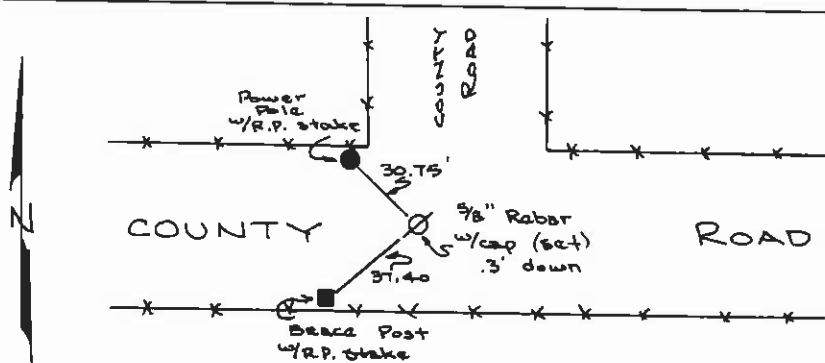
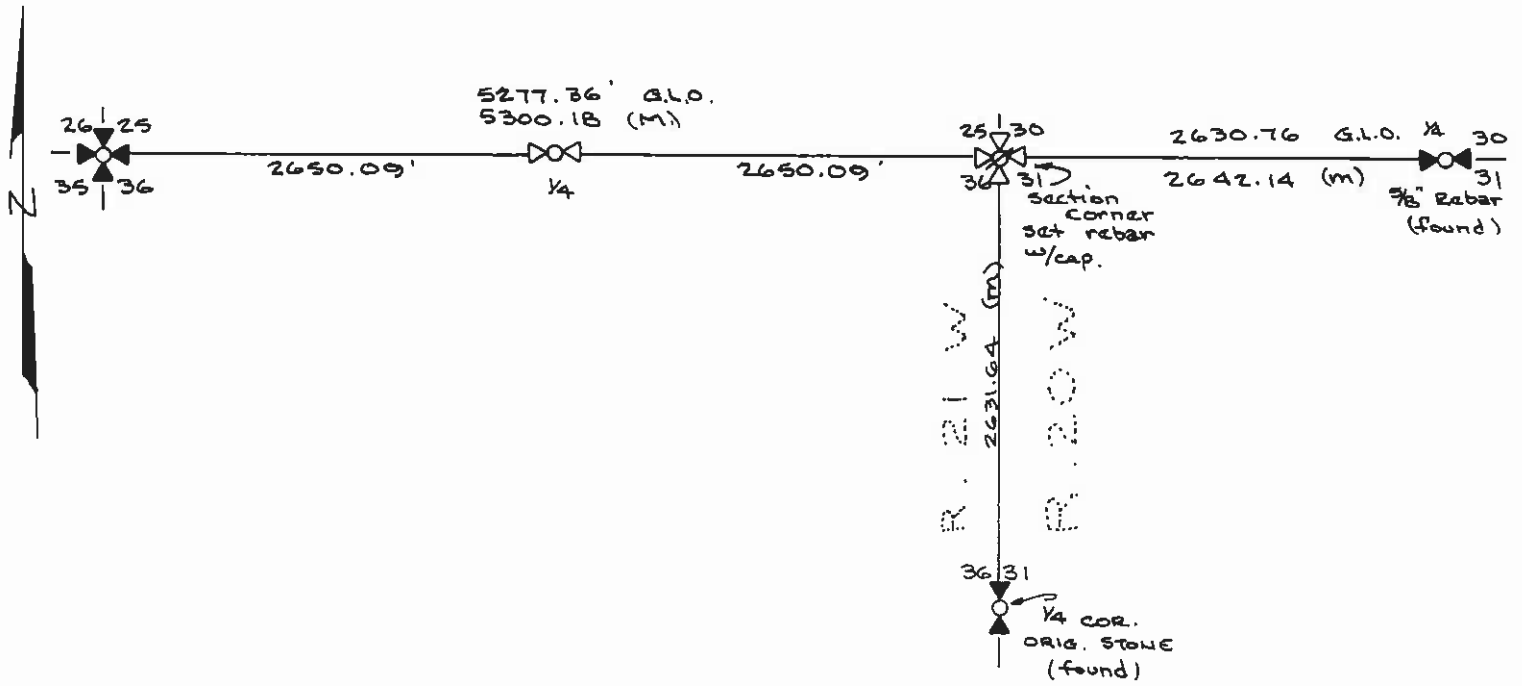
61 - 286869

1. Original and/or duplicate record used to evaluate the corner position.
2. Description of evidence found, note discrepancies in the record, state method of establishing lost or obliterated corners.
3. Description of monument and accessories set to perpetuate the corner position.
4. Sketch or corner, show all pertinent data which can best be shown in a sketch example, corner marking, topography ties, position of accessories, etc.
5. Certification must be signed and sealed by Registered Land Surveyor in State of Montana.
6. Fill in Cross Index & Section Diagram at bottom of sheet.

CERTIFIED CORNER RECORDATION

Corner SECTION COR. 25, 30, 36 + 31 T. 23 N R. 20 + 21 W P.M.M. LAKE County

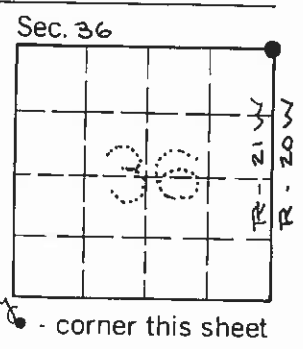
THE POSITION OF THIS CORNER FALLS IN THE CONSTRUCTION LIMITS OF THE EXISTING COUNTY ROAD. NO MONUMENT WAS FOUND AS IT WOULD HAVE BEEN DESTROYED BY CONSTRUCTION. THE CORNER POSITION WAS DETERMINED BY PROPORTIONAL MEASUREMENT FROM FOUND MONUMENTS AS SHOWN BELOW.



SKETCH OF CORNER

CERTIFICATION  
 I, STEPHEN H. DAY  
 certify the information shown herein is true and correct.  
 Signature Ground Party Chief  
 I, DONALD H. WESTER  
 certify that this corner record correctly represents work performed by me or under my direction in compliance with the "Corner Recordation Act" (70-22-101, et seq., M.C.A.)  
 Signature of Surveyor & Seal  
 Date: 12/18/84 Reg. No. 41305  
 Employer: \_\_\_\_\_

Office of Clerk and Recorder, County of Lake, State of Montana. This "corner record" was filed for record on December 20 12:40 P.M. of 1984 was noted on the cross-index plat and is assigned page No. 286869, in File No. C-1410  
 n/c  
 ETHEL M. HARDING, CLERK & RECORDER  
 County Official  
 By: Roxanne Cooper, Deputy  
 Cross Index No. V-25 T. 23 N R. 20 + 21 W P.M.M.



- corner this sheet