

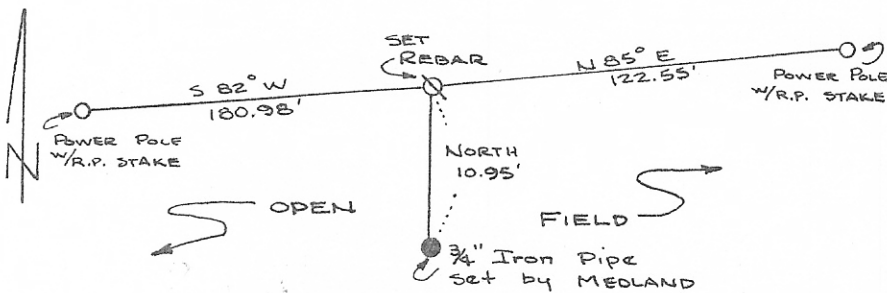
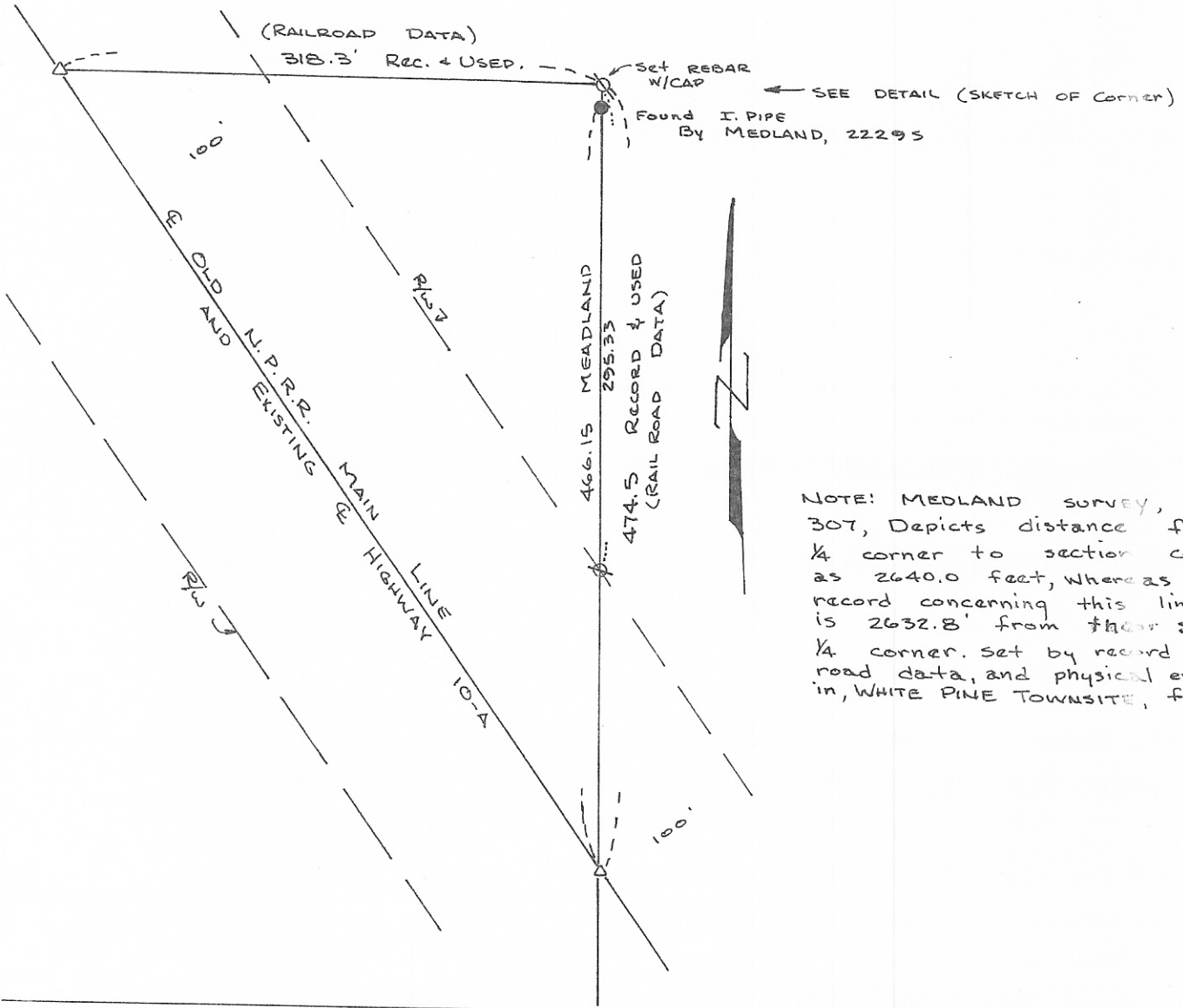
**INSTRUCTIONS**

1. and/or subsequent record used to evaluate the corner position.
2. Description of evidence found, note discrepancies in the record, state method of establishing lost or obliterated corners.
3. Description of monument and accessories set to perpetuate the corner position.
4. Sketch or corner, show all pertinent data which can best be shown in a sketch example, corner marking, topography ties, position of accessories, etc.
5. Certification must be signed and sealed by Registered Land Surveyor in State of Montana.
6. Fill in Cross Index & Section Diagram at bottom of sheet.

**CERTIFIED CORNER RECORDATION**

Corner Section Cor. 17, 18, 19 & 20 T. 23 N. R. 30 W. P.M.M. SANDERS County

At the SECTION CORNER OF SECTIONS 17, 18, 19, AND 20, T. 23 N., R. 30 W., P.M.M., SANDERS COUNTY, MONTANA. NO EVIDENCE OF THE ORIGINAL MONUMENT OR ACCESSORIES WERE FOUND. A 3/4" IRON PIPE WAS FOUND IN THE FIELD AND NOTED ON C.O.S. 307 AS BEING; "SET ON BASIS OF RECORD MEASUREMENT FROM ONE QUARTER CORNER, SEE DRAWING BELOW FOR ADDITIONAL DATA AND DISCREPANCIES FROM RECORD RAILROAD DATA.



SKETCH OF CORNER

CERTIFICATION

I, STEPHEN H. DAY  
certify the information shown herein is true and correct.  
Stephen H. Day  
Signature Ground Party Chief

I, DONALD H. WESTER  
certify that this Corner Record correctly represents work performed by me or under my direction in compliance with the "Corner Recordation Act" (70-22-101, et seq., M.D.A.)  
Donald H. Wester  
Signature of Surveyor & Seal

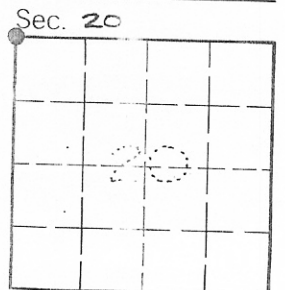
Date: 3-84 Reg. No. 4130S

Employer: \_\_\_\_\_

Office of Clerk and Recorder, County of Sanders **171223**. This "corner record" was filed for record on the 28th of March day of 1984 was noted on the cross-index plat and is assigned page No. \_\_\_\_\_, in book No. \_\_\_\_\_

Donna Vaughn  
County Official  
By Kyle Wollaston Dep

Cross Index No. N-5 T. 23N R. 30W P.M.M.



• - corner this sheet