

# CERTIFIED LAND CORNER RECORDATION

## DESCRIPTION OF CORNER EVIDENCE FOUND, AND ORIGINAL RECORD (IF KNOWN)

Found a brass cap monument 1' under ground 10' south of a fence intersection with fences north-south-east. Monument was marked per GLO record.

ORIGINAL RECORD - Set 2½" brass cap monument 4" above ground with a mound of stone west of monument. B.C. marked as follows:

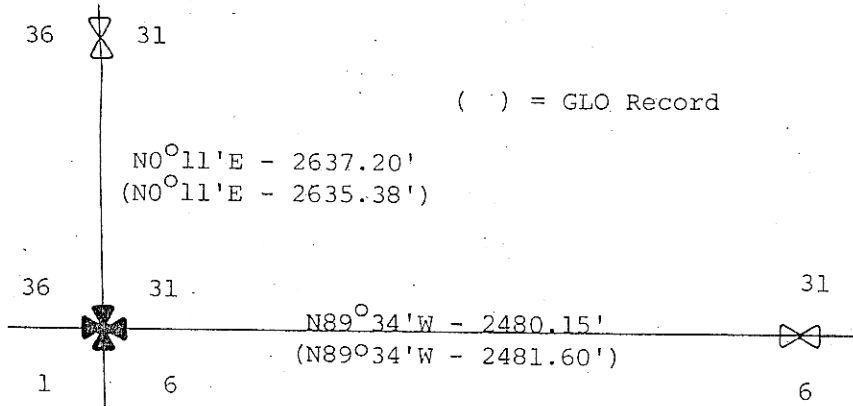
1949	
T24N	
R5W	R4W
S 36	S 31
S 1	S 6
T23N	

## DESCRIPTION OF MONUMENT AND ACCESSORIES ESTABLISHED TO PERPETUATE THE ORIGINAL LOCATION OF THIS CORNER:

Date of work: 10/29/76

Monument was in good condition. Nothing was done to perpetuate.

## SKETCH, WITH COURSE AND DISTANCE TO ADJACENT CORNERS IF DETERMINED IN THIS SURVEY. (MAY SKETCH OR PASTE REPRODUCTION ON REVERSE SIDE.)



Surveyor's Seal



I, WADE WOITH  
certify that the information shown herein is true and correct.

*Wade Woith*

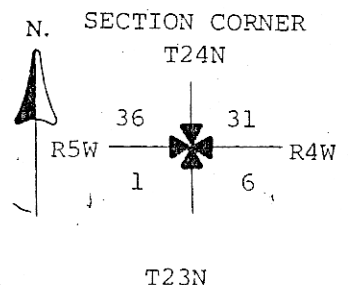
Signature of Ground Party Chief

I, WADE WOITH  
certify that I have carefully performed or reviewed the work done on the diagrammed corner as reported on this recordation form and approve the same.

*Wade Woith*

Signature of Surveyor

DIAGRAM OF CORNER:



= Corner recorded on the sheet

4537S  
Registration Number

Office of Clerk and Recorder, County of .....

This "corner record" was filed for record on the ..... day of ..... 19....., was noted on the cross-index plat and is assigned page No....., in book No.....

County Official

Cross Index No. 2-25 T. 24N R. 5W Mer.

→

A-1	23N	4W
<del>2-1</del>	<del>24N</del>	<del>4W</del>
A-25	23N	5W

**CERTIFIED LAND CORNER RECORDATION**

DESCRIPTION OF CORNER EVIDENCE FOUND, AND ORIGINAL RECORD (IF KNOWN)

No evidence found.

DESCRIPTION OF MONUMENT AND ACCESSORIES ESTABLISHED  
TO PERPETUATE THE ORIGINAL LOCATION OF THIS CORNER:

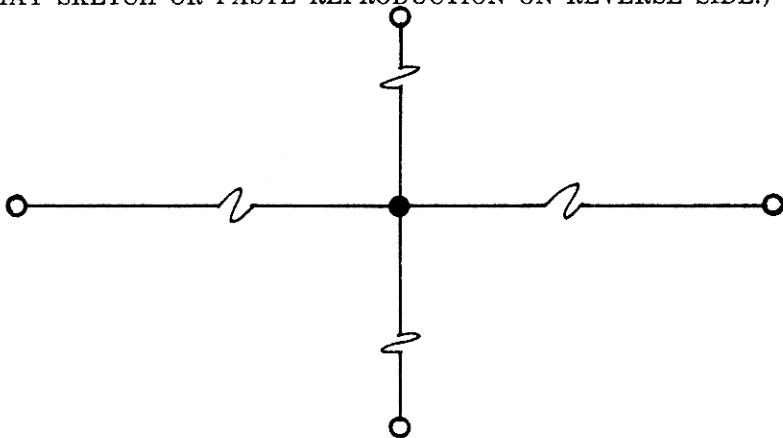
Set  $\frac{5}{8}$ "  $\emptyset$  x 24" rebar w/cap at corner location. Date of work: 11/17/75

Accessories: Set  $\frac{1}{2}$ "  $\emptyset$  x 12" rebar West 10.00 feet.

Set  $\frac{1}{2}$ "  $\emptyset$  x 12" rebar S45°W 10.00 feet.

Set  $\frac{1}{2}$ "  $\emptyset$  x 12" rebar South 10.00 feet.

SKETCH, WITH COURSE AND DISTANCE TO ADJACENT CORNERS IF DETERMINED IN THIS SURVEY.  
(MAY SKETCH OR PASTE REPRODUCTION ON REVERSE SIDE.)



Surveyor's Seal

I, Robert E. Findorff  
certify that the information shown herein is true and correct.

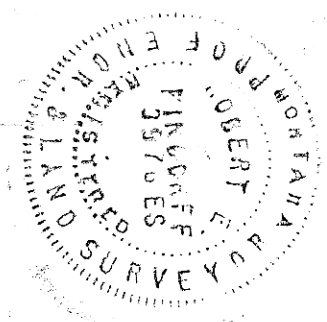
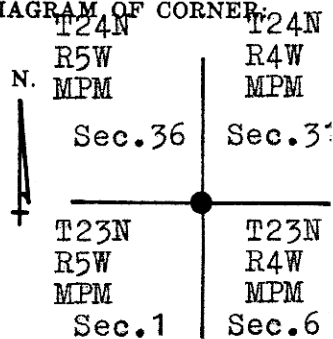
Signature of Ground Party Chief

I, Robert E. Findorff  
certify that I have carefully performed or reviewed the work done on the diagrammed corner as reported on this recordation form and approve the same.

Signature of Surveyor Robert E. Findorff

3976. ES  
Registration Number

DIAGRAM OF CORNER



Office of Clerk and Recorder, County of DeWitt 323886

This "corner record" was filed for record on the 12<sup>th</sup> day of July 1976, was noted on the cross-index plat and is assigned page No. \_\_\_\_\_, in book No. \_\_\_\_\_

By: Mary N. Baker Co. Clerk  
County Official

Cross Index No. 2-25 T. 24 N R. 5W Mer. 7526  
A-25 23 N 5W  
A-1 23 N 4W