

INSTRUCTIONS

1. Original and/or subsequent record used to evaluate the corner position.
2. Description of evidence found, note discrepancies in the record, state method of establishing lost or obliterated corners.
3. Description of monument and accessories set to perpetuate the corner position.
4. Sketch of corner, show all pertinent data which can best be shown in a sketch example, corner marking, topography ties, position of accessories, etc.
5. Certification must be signed and sealed by Land Surveyor registered in the State of Montana.
6. Fill in Cross Index & Section Diagram at bottom of sheet.

CERTIFIED CORNER RECORDATION

Corner 1/4 Sections 1 & 6 T. 24N R. 4 & 5W P.M.M. Teton County

ORIGINAL RECORD: (1873 G.L.O.) Set a sandstone 13x10x5 ins., 8 ins. in the ground for the 1/4 sec. cor. marked 1/4 on west side.

SUBSEQUENT RECORD: (1955 B.L.M.) The 1/4 sec. cor. of secs. 1 and 6, determined on the extension of a field division to the W. and under a property line fence bearing N. and S. At the corner point:
Set an iron post, 30 ins. long, 2 1/2 ins. diam., 25 ins. in the ground, with brass cap mkd., 1/4 S1-S6 1955, raise a mound of stone, 3 ft. base, 1 1/2 ft. high, W. of the cor. post.

SUBSEQUENT RECORD: None found.

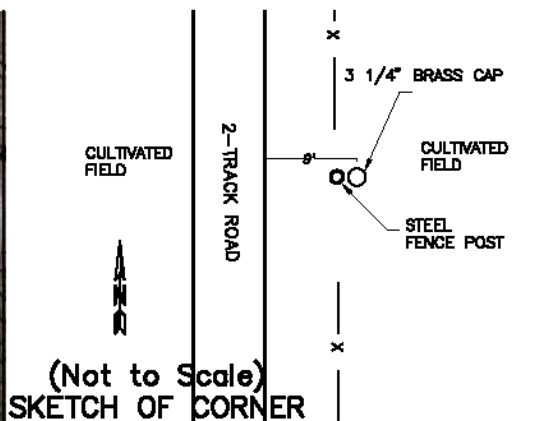
EVIDENCE FOUND: Found a 3 1/4" brass cap 0.5' below the ground surface, marked as shown in the sketch below, the monument falls 9' east of the east edge of farm 2-track field road; the monument is in line with a row of fence posts running north and south and there is a steel fence post which is 2.5' tall and 0.4' west from the corner.

PERPETUATION: Left the brass cap as found.

Date of Survey: February, 2007.

Compass Declination Used: 16°E

NAD 83 coordinates for this corner:
Latitude = 47°51'50.210"N Longitude = 112°10'39.127"W
NOTE: These coordinates are to be used as a search tool only.



CERTIFICATION

I, Steve Cummings
certify the information shown herein is true and correct.

Signature Ground Party Chief

I, Kurt A. Luebke
certify that this Corner Record correctly represents work performed by me or under my direction in compliance with the "Corner Recordation Act" (70-22-101, et seq., M.C.A.)

Signature of Surveyor & Seal

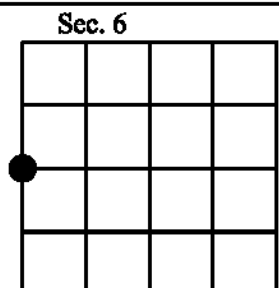
Date: _____ Reg. No. 13237 S

Employer: DJ&A P. C.

Office of Clerk and Recorder, County of Teton. This "corner record" was filed for record on _____ was noted on the cross index plat and is assigned page No. _____, in book No. _____

County Official

Cross Index No. C-1 T. 24N R. 4W PMM
Cross Index No. C-25 T. 24N R. 5W PMM



● - corner this sheet