

INSTRUCTIONS

1. Original and/or subsequent record used to evaluate the corner position.
2. Description of evidence found, note discrepancies in the record, state method of establishing lost or obliterated corners.
3. Description of monument and accessories set to perpetuate the corner position.
4. Sketch of corner, show all pertinent data which can best be shown in a sketch example, corner marking, topography ties, position of accessories, etc.
5. Certification must be signed and sealed by Land Surveyor registered in the State of Montana.
6. Fill in Cross Index & Section Diagram at bottom of sheet.

CERTIFIED CORNER RECORDATION

Corner 1/4 Sections 25 & 36 T. 24N R. 5W P.M.M. Teton County

ORIGINAL RECORD: (1873 G.L.O.) Set a sandstone 16x11x3 ins., 11 ins. in the ground for 1/4 sec. cor. marked 1/4 on north side.

SUBSEQUENT RECORD: None

SUBSEQUENT RECORD: (1997 PLAT 563 by Ronald Lindseth-8644 S) On the plat, Mr. Lindseth shows the 1/4 corner as a 1/2" rebar with Yellow Plastic Cap marked ES 3524 on a straight line projection of Bellview Road.

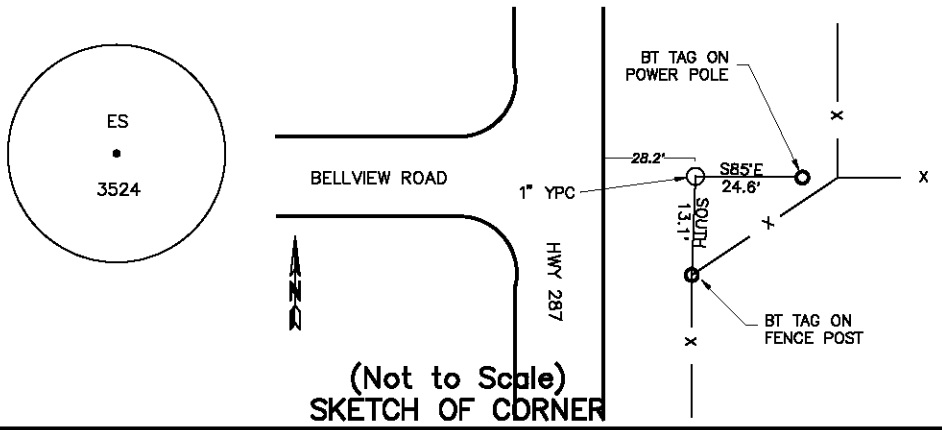
EVIDENCE FOUND: Found a 1" yellow plastic cap 0.2' below the ground surface, marked as shown in the sketch below, the monument falls 28.2' east of east edge of asphalt for Highway 287.

PERPETUATION: Left the yellow plastic cap as found. Placed a BT tag on a power pole which bears S85°E, 24.6' distant.
Placed a BT tag on a fence corner post which bears South, 13.1' distant.

Date of Survey: February, 2007.

Compass Declination Used: 16°E

NAD 83 coordinates for this corner:
Latitude = 47°47'56.221"N Longitude = 112°11'18.834"W
NOTE: These coordinates are to be used as a search tool only.



CERTIFICATION

I, John Shirey
certify the information shown herein is true and correct.

Signature Ground Party Chief

I, Kurt A. Luebke
certify that this Corner Record correctly represents work performed by me or under my direction in compliance with the "Corner Recordation Act" (70-22-101, et seq., M.C.A.)

Signature of Surveyor & Seal

Date: _____ Reg. No. 13237 S

Employer: DJ&A P. C.

Office of Clerk and Recorder, County of Teton. This "corner record" was filed for record on _____ was noted on the cross index plat and is assigned page No. _____, in book No. _____

County Official

Sec. 36

		●	

● - corner this sheet

Cross Index No. V-23 T. 24N R. 5W PMM