

INSTRUCTIONS

1. Original and/or subsequent record used to evaluate the corner position.
2. Description of evidence found, note discrepancies in the record, state method of establishing lost or obliterated corners.
3. Description of monument and accessories set to perpetuate the corner position.
4. Sketch of corner, show all pertinent data which can best be shown in a sketch example, corner marking, topography ties, position of accessories, etc.
5. Certification must be signed and sealed by Land Surveyor registered in the State of Montana.
6. Fill in Cross Index & Section Diagram at bottom of sheet.

CERTIFIED CORNER RECORDATION

¼ Corner Sections 15 & 16 T. 24 N. R. 19 W. P.M.M. Lake County

ORIGINAL RECORD: (1906 G.L.O.) Not recovered.

EVIDENCE FOUND: Found 1" iron pipe with rounded iron "cap" 0.6' above ground .

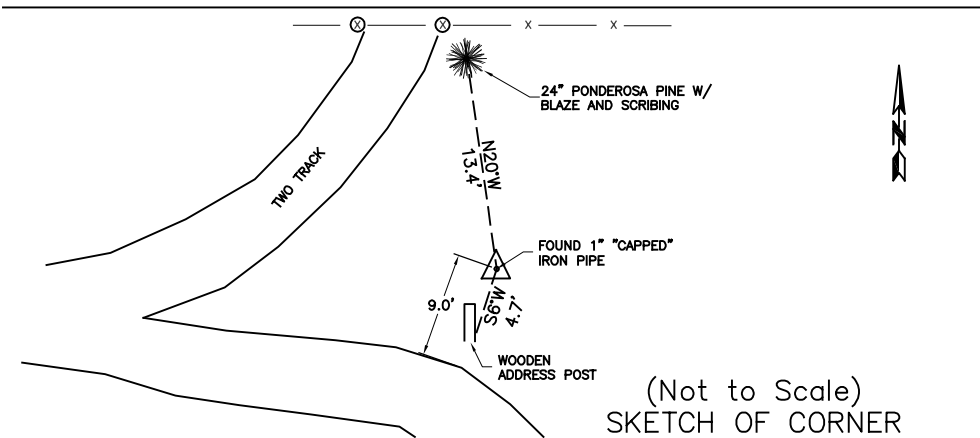
24" Ponderosa Pine blazed and scribing visible bears N20°W, a distance of 13.4 ft.
 4" X 4" wood post with address marked bears S6°W, a distance of 4.7 ft.

PERPETUATION: Left monument as found.

Date of Survey: October, 2010.



NAD 83 coordinates for this corner:
 Latitude = 47°50'28.27"N Longitude = 114°01'38.23"W
 NOTE: These coordinates are to be used as a search tool only.



CERTIFICATION

I, Steve Cummings
 certify the information shown herein is true and correct.

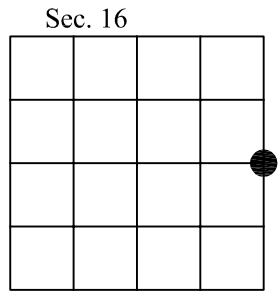
 Signature Ground Party Chief

I, Kurt A. Luebke
 certify that this Corner Record correctly represents work performed by me or under my direction in compliance with the "Corner Recordation Act" (70-22-101, et seq., M.C.A.)

 Signature of Surveyor & Seal

Date: 11-22-2010 Reg. No. 13237 S

Employer: DJ&A P. C.



● - corner this sheet