

CERTIFIED LAND CORNER RECORDATION

DESCRIPTION OF CORNER EVIDENCE FOUND, AND ORIGINAL RECORD (IF KNOWN)

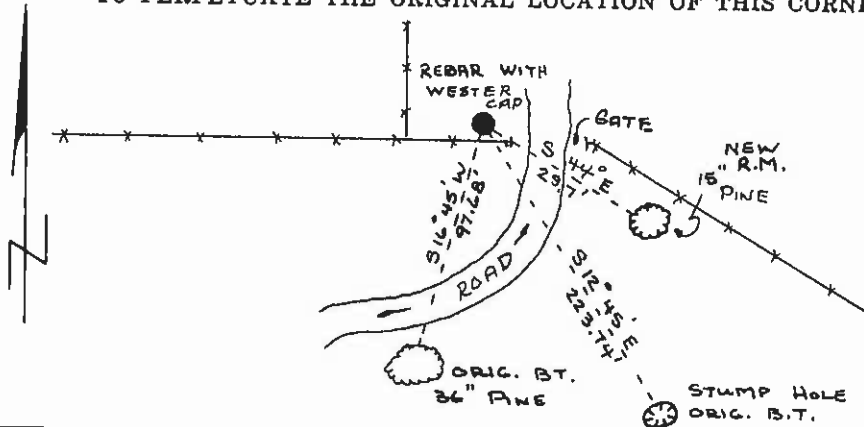
AT THE ONE QUARTER CORNER COMMON TO SECTIONS 25, AND 30, T24N, R21W P.M.M. LAKE COUNTY MONTANA.

(REC.) SET A TRAP ROCK, 14x9x5 9 INS IN THE GROUND, FOR 1/4 SEC COR, MARKED 1/4 ON W. FACE; FROM WHICH: A PINE, 24 INS. DIAM, BEARS S 12° 45' E 339 IKS. DIST. MARKED 1/4 S 30 BT. A PINE, 18 INS DIAM, BEARS S 16° 45' W 148 IKS. DIST MARKED 1/4 S 25 BT.

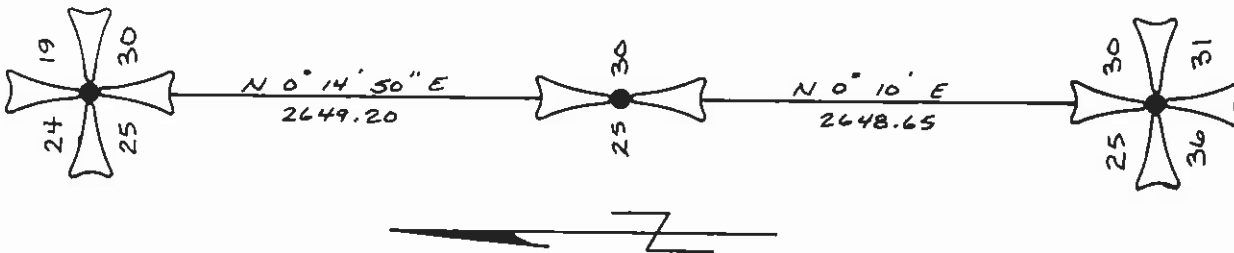
FOUND) FOUND ORIGINAL B.T. IN SECTION 25, AND STUMP HOLE IN SECTION 30, NO MONUMENT FOUND.

DESCRIPTION OF MONUMENT AND ACCESSORIES ESTABLISHED TO PERPETUATE THE ORIGINAL LOCATION OF THIS CORNER:

Date of work: 8-80



SKETCH, WITH COURSE AND DISTANCE TO ADJACENT CORNERS IF DETERMINED IN THIS SURVEY. (MAY SKETCH OR PASTE REPRODUCTION ON REVERSE SIDE.)



Surveyor's Seal



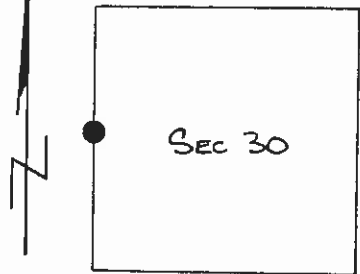
I, STEPHEN H. DAY certify that the information shown herein is true and correct.

Signature of Stephen H. Day, Signature of Ground Party Chief

I, DONALD H. WESTER certify that I have carefully performed or reviewed the work done on the diagrammed corner as reported on this recordation form and approve the same.

Signature of Donald H. Wester, Signature of Surveyor

DIAGRAM OF CORNER: T24N, R21W



● = DENOTES CORNER SET

4130.S Registration Number

of Clerk and Recorder; County of Lake, State of Montana

"corner record" was filed for record on the 27th day of AUGUST 1980, at 2:01 P.M. Ethel M. Harding, Lake County Clerk & Recorder. No. 256845, in book No. C-1072. By: [Signature] Deputy County Official