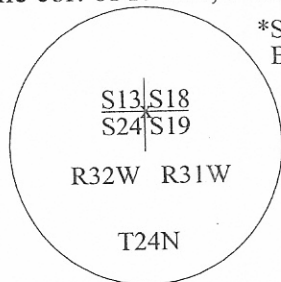
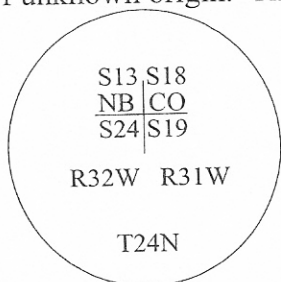


CERTIFIED CORNER RECORDATION

Corner N.W. Sec. Cor. Sec. 19 T. 24 N R. 31W P.M., MT Sanders County

I. 1893 G.L.O. Original Record by Arthur Page et. al.: Set a post, 4 ft. long, 4 ins. square, 24 ins. in the ground, for cor. to secs. 13,18,19&24 mkd. "T24N S18" on N.E., "R31W S19" on S.E., "R32W S 24" on S.W. and "S13" on N.W. faces, with 3 notches on S. and N. edges. Established four bearing trees.

1981 B.L.M. Remonumentation Record by R. Wayne Wilson: The cor. of secs. 13,18,19&24, monumented with a brass post, 2 ins. diam., firmly set, projecting 6 ins. above the surface of the ground, accepted the position of the original corner, with brass cap mkd. as shown, and witnessed by three bearing trees of unknown origin. The corner is situated at the cor. of fences, extending N. and W.



*See Note Below.

1985 Certified Corner Recordation by R. David Schurian of P.C.I., No. 3102S: Found monument as stated in the 1981 B.L.M. Remonumentation Record and witnessed by three bearing trees, with visible scribe or face. Set two steel guard posts by corner with property boundary and Land Survey Monument signs attached. Established two new bearing trees.

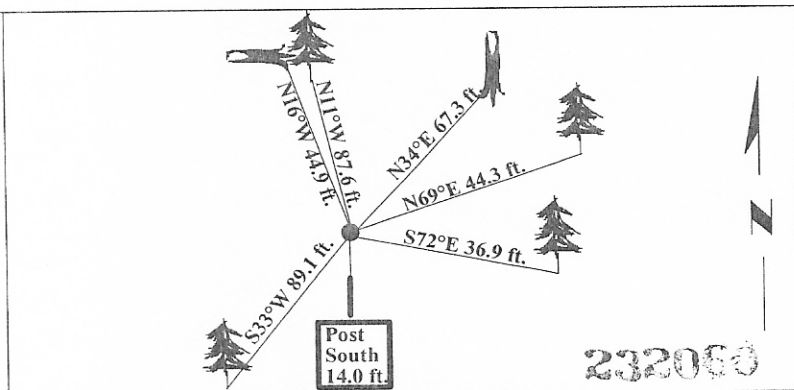
II. Found a 2 in. diam. iron pipe, firmly set, protruding 8 ins. above the ground, with a 2 1/4 in. diam. brass cap mkd. as shown above on the righthand side and witnessed by the remains of five bearing trees and the remains of a 4x4 wooden post, bears South, 14.0 ft. from which:

- A dead larch, 12 ins. diam., bears N34°E, 67.3 ft. dist., with a healed face. (record unknown-B.L.M. found the bearing tree to be at S34°E, 102 lks. 67.32 ft.)
- A pine, 14 ins. diam., bears S72°E, 36.9 ft. dist., with a healed face. (record unknown-B.L.M. found the bearing tree to be at N72°E, 56 lks., 36.96 ft.)
- A pine, 12 ins. diam., bears S33°W, 89.1 ft. dist., with visible marks. (PCI-record)
- A pine, 13 ins. diam., bears N11°W, 87.6 ft. dist., with visible marks. (PCI-record)
- A dead down larch, 13 ins. diam., bears N16°W, 44.9 ft. dist. (record unknown-B.L.M. found the bearing tree to be at N16°W, 68 lks., 44.88 ft.)

III. Established one new bearing tree:
A fir, 13 ins. diam., bears N69°E, 44.3 ft. dist., mkd. "T24N R31W S18 BT".

*Note: No "NE" or "CO" found on cap as stated in the B.L.M. notes and P.C.I. Corner Recordation. Painted bearing trees and attached Land Survey Monument and Bearing Tree signs.

Magnetic Declination: 20° East.



SKETCH OF CORNER

CERTIFICATION

I, Thomas M. Hommel
certify the information shown herein is true and correct.

[Signature]

I, Steven A. Boyer
certify that this Corner Record correctly represents work performed by me or under my direction in compliance with the "Corner Recordation Act" (70-22-101, et seq., M.C.A.)

[Signature]
Signature of Surveyor & Seal

Date: 10/01/98

Reg. No.: 9750LS

Employer: U.S. FOREST SERVICE

Office of Clerk and Recorder, County of Sanders. This "corner record" was filed for record on Nov. 5, 1998 at 8:46 am was noted on the cross-index plat and is assigned page No.

in book No. 574 *[Signature]*
County Official

Sec. 19

● - corner this sheet

Cross Index No. N-1 T. 24N R. 31W P.M., MT

No Fee