

INSTRUCTIONS

1. Description of monument and accessories set to perpetuate the corner position.
2. If any discrepancy is found, note discrepancies in the record, state method of establishing lost corners.
3. Description of monument and accessories set to perpetuate the corner position.
4. Sketch or corner, show all pertinent data which can best be shown in a sketch example, corner marking, topography (lies, position of accessories, etc).
5. Certification must be signed and sealed by Registered Land Surveyor in State of Montana.
6. Fill in Cross Index & Section Diagram at bottom of sheet.

CERTIFIED CORNER RECORDATION

Corner Section 18 | 17 / 19 | 20 T. 24N R. 31W P.M.M. Sanders County

RECORD: 1893 GLO

SET A GRANITE STONE 18x12x8 INS., 12 INS. IN THE GROUND, FOR COR. TO SECS. 17, 18, 19 AND 20, MARKED WITH 3 NOTCHES ON S. AND 5 NOTCHES ON E. EDGES, FROM WHICH:

A TAMARACK 10 INS. DIAM. BEARS N.16 3/4°E., 27 LKS DIST. MARKED T.24N., R.31W., S. 17 B.T.

A FIR 12 INS. DIAM. BEARS S.46 1/2°E., 29 LKS DIST. MARKED T.24N., R.31W., S. 20 B.T.

A TAMARACK 10 INS. DIAM. BEARS N.16 1/2°W., 78 LKS DIST. MARKED T.24N., R.31W., S. 18 B.T.

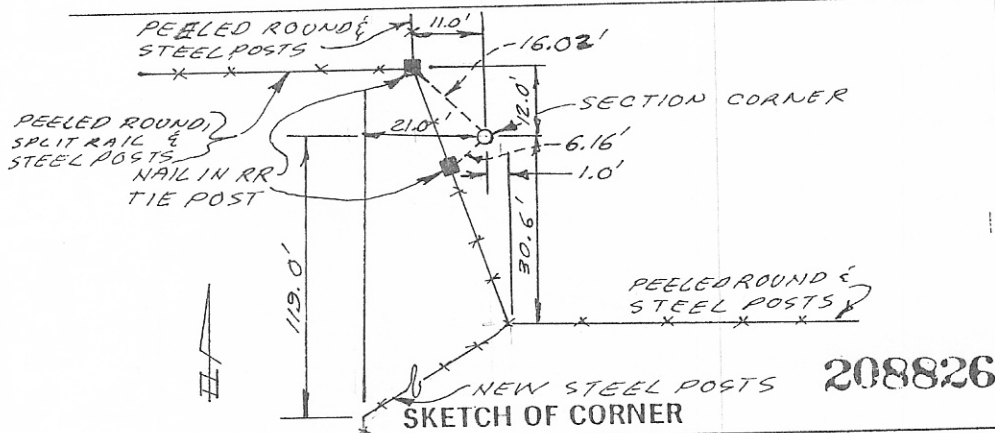
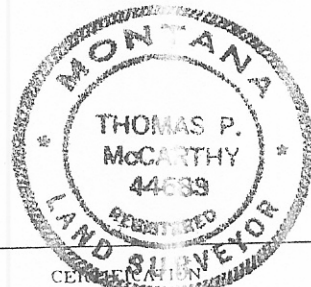
A FIR 10 INS. DIAM. BEARS S.65°W., 74 LKS. DIST. MARKED T.24N., R.31W., S. 19 B.T.

FOUND: NO EVIDENCE FOUND OF CORNER OR ACCESSORIES. THIS AREA HAS BEEN DISTURBED BY LOGGING AND ROAD CONSTRUCTION.

CORNER REESTABLISHED BY DOUBLE PROPORTIONMENT METHOD, SET A 5/8"x24" IRON PIN WITH 2 1/2" ALUMINIUM CAP MARKED:



SEE CERTIFICATE OF SURVEY NO. 1244



1. William W. Weikel
 certify the information shown herein is true and correct.
 Signature Ground Party Chief

1. Thomas P. McCarthy
 certify that this Corner Record correctly represents work performed by me or under my direction in compliance with the "Corner Recordation Act" (70-22-101, et seq., M.C.A.)
 Signature of Surveyor & Seal

Date: 6/14/93 Reg. No. 44688
 Employer: WGM group

Office of Clerk and Recorder, County of Sanders. This "corner record" was filed for record on the June 14th day of 1993 was noted on the cross-index plat and is assigned page No. 3 925, in book No. _____ at 10:32 am Wipiel Knight By Patricia Mengrallon County Official

Sec. 19
