

CERTIFIED CORNER RECORDATION

Corner 1/4 Secs. 5 & 6 T. 24N R. 31W P.M., MT Sanders County

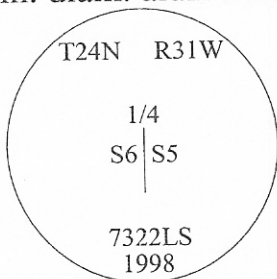
I. 1893 G.L.O. Original Record by Arthur Page et. al.: Set a post, 3.0 ft. long, 3.0 ins. square, 24 ins. in the ground, for 1/4 sec. cor., mkd. "1/4 S" on the W. face.

Established two bearing trees:

- A fir, 10 ins. diam., bears S77 1/2°E, 27 lks. dist., mkd. "1/4 S BT".
- A fir, 7 ins. diam., bears S41°W, 27 lks. dist., mkd. "1/4 S BT".

II. Found no evidence of the original post or the original bearing trees.

III. Set by survey, a 3/4 in. diam. x 10 ins. long aluminum driveable rod, 4 ins. below the surface of the road, with a 3 1/4 in. diam. aluminum cap, mkd. as shown.



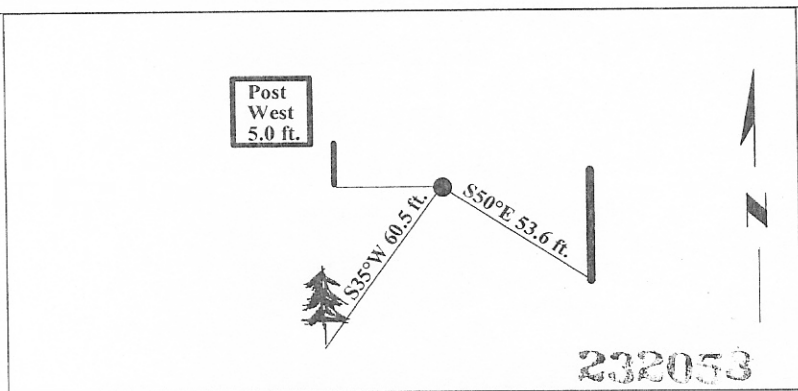
Established one new bearing tree and two reference monuments:

- A powerpole, bears S50°E, 53.6 ft. dist., not scribed.
- A pine, 14 ins. diam., bears S35°W, 60.5 ft. dist., mkd. "1/4 S6 BT".
- A post, bears West, 5.0 ft. dist., with Land Survey Monument and Property Boundary decals attached.

*Corner falls on west edge of Rd., just past a lumber mill on east side of Rd., approximately 140.1 ft., North of entrance to mill.

Painted red bands around the bearing tree and attached Land Survey Monument and Bearing Tree signs.

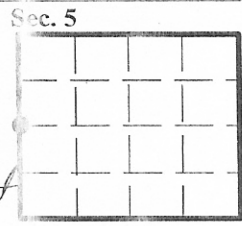
Magnetic Declination: 20° East.



SKETCH OF CORNER

CERTIFICATION
I. <u>Thomas M. Hommel</u> certify the information shown herein is true and correct.
I, <u>Alvah F. Hughes</u> certify that this Corner Record correctly represents work performed by me or under my direction in compliance with the "Corner Recordation Act" (70-22-101, et seq., M.C.A.)
Signature of Surveyor & Setter
Date: <u>9/28/98</u>
Reg. No.: <u>7322LS</u>
Employer: <u>U.S. FOREST SERVICE</u>

Office of Clerk and Recorder, County of Sanders. This "corner record" was filed for record on Nov. 5, 1998 at 8:32 am was noted on the cross-index plat and is assigned page No. _____ in book No. 567 Tillie Wollaston, By: Ronia Wright County Official



• - corner this sheet

No Fee