

CERTIFIED CORNER RECORDATION

33 | 34
 Corner Cor. of Secs. 4 | 3 T. 24 N. R. 31 W. P.M.M. SANDERS County

I. Record:

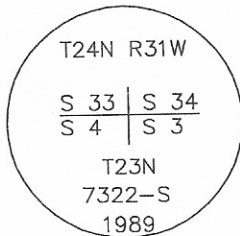
1893 original record by Rodney and Arthur Page: Set a post 4 ft. long, 4 ins. square, 24 ins. in the ground, for cor. of secs. 3, 4, 33 and 34, marked T24N S34 on N.E., R31W S3 on S.E., T23N S4 on S.W. and S33 on N.W. faces, with 3 notches on E. and W. edges, from which:

- A cedar 10 ins. diam., bears N38°E, 48 lks. dist., mkd. T24N R31W S34 BT.
- A tamarack 12 ins. diam., bears S58°E, 78 lks. dist., mkd. T23N R31W S3 BT.
- A cedar 22 ins. diam., bears S26 1/2°W, 109 lks. dist., mkd. T23N R31W S4 BT.
- A tamarack 14 ins. diam., bears N16°18'W, 91 lks. dist., mkd. T24N R31W S33 BT.

Set, 1968, Deed Exhibit A, Volume 83, Page 120 in Sanders County Courthouse by L. McCarthy, 1741-S: "Not Found, Pin Set".

Utilized, 1979, Certificate of Survey No. 423-A by H. G. Warren: "Fnd. Pin Set by 1741S".

1981 Certificate Corner Recordation by Alvah F. Hughes: No original evidence found due to 1910 fire in the area and cultural use (roads, buildings, fields). A nail, 12 ins. long, 4 ins. below the road surface, verified by Bruce Linderman, adjacent landowner. I accept the McCarthy nail as best available evidence of this corner position. At the corner position (McCarthy nail), I set a 2 1/2 in. diam. aluminum post, 30 ins. long 6 ins. below the road surface with a 3 1/4 in. diam. aluminum cap marked:



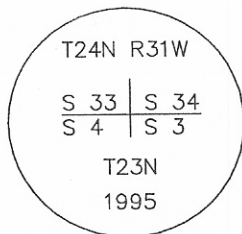
1983 BLM Dependent Resurvey of a Portion of the North Boundary, Township 23 North, Range 31 West by Clifford E. Carnicom: Beginning at the cor. of secs. 3, 4, 33, and 3, on the N. bdy. of the Tp., monumented with a damaged aluminum post, 2 1/2 ins. diam., firmly set flush with the ground, with aluminum cap mkd. (shown above), from which the bearing trees and an accessory mkd. by A. Hughes in 1989:

- A birch 37 ins. diam., bears N47°E, 171.6 ft. dist., with scribe mks. T24N R31W S3 T visible on a partially healed blaze.
- A larch 17 ins. diam., bears S32°E, 55.3 ft. dist., with mks. R31W S3 BT visible on a partially healed blaze.
- A power pole No. C332/13, bears S28°W, 46.2 ft. dist.

This cor. position was reestablished by H. G. Warren, in 1979, remonumented by Alvah F. Hughes, Montana Registered Land Surveyor No. 7322S, in 1989, recorded in the Sanders County Courthouse, and is accepted as a careful and faithful reestablishment of the position of the corner.

At the corner point

Set a stainless steel post, 30 ins. long, 2 1/2 ins. diam., 36 ins. in the ground, with brass cap mkd.



Bury the damaged post alongside, and deposit a magnetic marker at the base. No suitable bearing trees in the NW quadrant available.

Cor. is situated at the intersection of a road bearing S., with the projection of fences extending E. and W.

Cross Index No. Z-13 T. 24N. R. 31W. P.M., MT

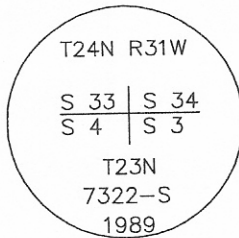
CERTIFIED CORNER RECORDATION

33 | 34
 Corner Cor. of Secs. 4 | 3 T. 24 N. R. 31 W. P.M.M. SANDERS County

II. Found a 2 1/2 in. diam. stainless steel pipe, flush with the road surface. The top of the pipe has been damaged and no cap was attached to the pipe.

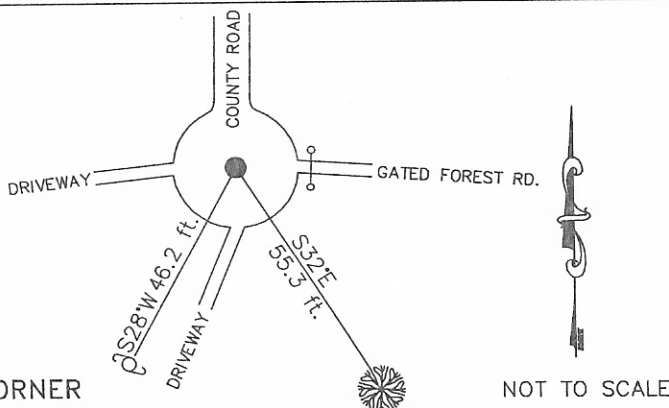
A larch, 17 ins. diam., bears S32°E, 55.3 ft. dist., mkd. with a healed face.
 A power pole, bears S28°W, 46.2 ft. dist., not scribed.

III. At the position of the found pipe, drove a 5/8 in. diam. X 24 in. long rebar in the center of the found pipe, 10 ins. below the surface of the road, with a 3 1/4 in. diam. aluminum cap marked as shown:



No trees within reasonable distance for new bearing trees.

Date of Fieldwork: 11/14/2001
 Survey crew: Steve Boyer, Tom Hommel
 Magnetic declination: 20° East assumed
 Equipment used: Hand compass and loggers tape
 U.S. Forest Service, Supervisors Office, 1101 Hwy. 2 West, Libby, MT 59923 (406) 293-6211

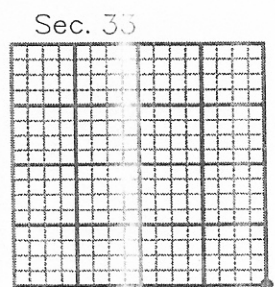


CERTIFICATION

I, Steven A. Boyer 9750 S
 certify the information shown hereon is true and correct.
 Signature of Record Holder: [Signature]
 I, Roger O. Green GREEN
 certify that this Corner Record correctly represents work performed by me or under my direction in compliance with the "Corner Recordation Act" (70-22-101, et seq., M.C.A.)
 Signature of Surveyor: [Signature]
 Date: 11/14/2001 Reg. No. 13769LS
 Employer: U. S. Forest Service

Office of Clerk and Recorder, County of Sanders. This "corner record" was filed for record on February 20, 2002 @ 3:40 P.M.

was noted on the cross-index plat and is assigned page No. _____, in
 book No. 4 927 Pat Ingraham by: [Signature] Deputy
 County Official



Cross Index No. Z-13 T. 24N. R. 31W. P.M., MT
 Adopted July 1, 1981, Montana Board of Professional Engineers & Land Surveyors

• corner this sheet