

LAYCO

61-265216

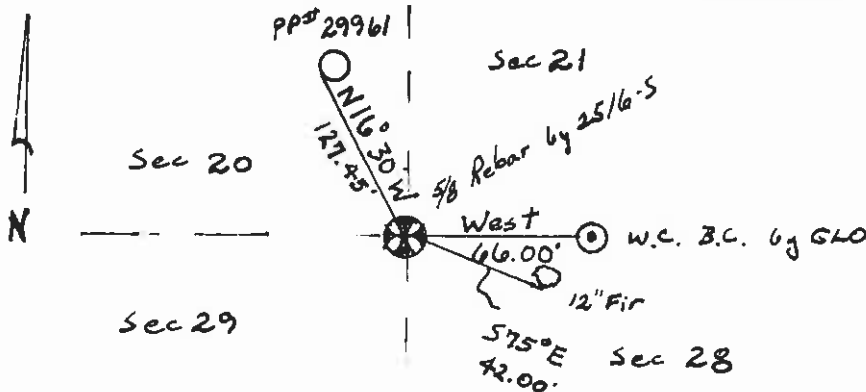
### CERTIFIED LAND CORNER RECORDATION

#### DESCRIPTION OF CORNER EVIDENCE FOUND, AND ORIGINAL RECORD (IF KNOWN)

Fd witness corner B.C. by GLO  
Set 5/8" Doyle Rebar

#### DESCRIPTION OF MONUMENT AND ACCESSORIES ESTABLISHED TO PERPETUATE THE ORIGINAL LOCATION OF THIS CORNER:

Date of work: 5/81



SKETCH, WITH COURSE AND DISTANCE TO ADJACENT CORNERS IF DETERMINED IN THIS SURVEY. (MAY SKETCH OR PASTE REPRODUCTION ON REVERSE SIDE.)

see reverse side.

#### DIAGRAM OF CORNER:

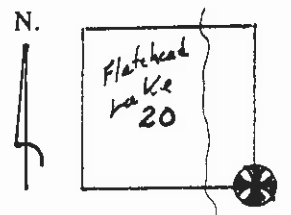
Surveyor's Seal

I, Bryan Block  
certify that the information shown herein is true and correct.

Bryan Block  
Signature of Ground Party Chief

I, C. W. Doyle  
certify that I have carefully performed or reviewed the work done on the diagrammed corner as reported on this recordation form and approve the same.

C. W. Doyle  
Signature of Surveyor



= Corner recorded on the sheet

2516-S  
Registration Number

Office of Clerk and Recorder, County of Lake, State of Montana

This "corner record" was filed for record on the 14th day of December, 1981, at 11:31 o'clock A.M.  
assigned MICRO. 265216, in book No. C-1166.  
ETHEL M. HARDING, Clerk and Recorder  
By: Goranne Hartsoch, Deputy  
County Official

Cross Index No. R-9 T 25 N R 19 W Mer.