

INSTRUCTIONS

1. Original and/or subsequent record used to evaluate the corner position.
2. Description of evidence found, note discrepancies in the record, state method of establishing lost or obliterated corners.
3. Description of monument and accessories set to perpetuate the corner position.
4. Sketch of corner, show all pertinent data which can best be shown in a sketch example, corner marking, topography ties, position of accessories, etc.
5. Certification must be signed and sealed by Land Surveyor registered in the State of Montana.
6. Fill in Cross Index & Section Diagram at bottom of sheet.

CERTIFIED CORNER RECORDATION

HES #755 COR #2

Corner 1/4 Cor. S5 | S4 & HES #623 COR #4 T. 25 N., R. 19 W., P.M.M. Lake County

RD 1 GLO survey by Bickel and Filer, 1902.

"Set a slatestone, 15 x 12 x 8 ins., 10 ins. in the ground, for 1/4 sec. cor., marked 1/4 on W. face; from which:

A tamarack, 10 ins. diam., bears S.60° E., 25 lks. dist., marked 1/4 S4 BT.

A fir, 7 ins. diam., bears S.34° W., 11 lks. dist., marked 1/4 S5 BT."

RD 2 Homestead Entry Survey #623 by Fred Thieme, 1916.

"To Cor. No. 4.

Identical with the 1/4 Sec. Cor. between Secs. 4 and 5, a quartzite stone 8x12x8" above ground, heretofore described. I mark this for Cor. No. 4, by a cross (x) on top for the exact corner point, from which

A cross (x) on a larch tree, 10 ins. dia., bears S.32° 00' E., 27 lks. dist.

A cross (x) on a larch tree, 9 ins. dia., bears S.63° 30' W., 30 lks. dist.; each blazed and scribed 4 H.E.S. 623 BT.

I set a stake alongside of corner, marked 4 H.E.S. 623.

Raise a mound of stone, 4 ft. base, 3 ft. high, NE. of corner."

RD 3 Homestead Entry Survey #755 by R.E. Maurer, 1917.

"To Cor. No. 2.

Identical in point for List Cor. No. 2 and identical with the 1/4 Sec. Cor. of Secs. 4 and 5 and Cor. No. 4 of H.E.S. No. 623, a quartzite stone, 6x14x7 ins. above ground, heretofore described. The cross on the top is the exact corner point, from which

A cross (x) on a tamarack tree, 9 ins. dia., bears S. 63° 30' W., 30 lks. dist.

A cross (x) on a tamarack tree, 11 ins. dia., bears S. 31° 55' E., 27 lks. dist.; each blazed and scribed 2 H.E.S. 755 BT.

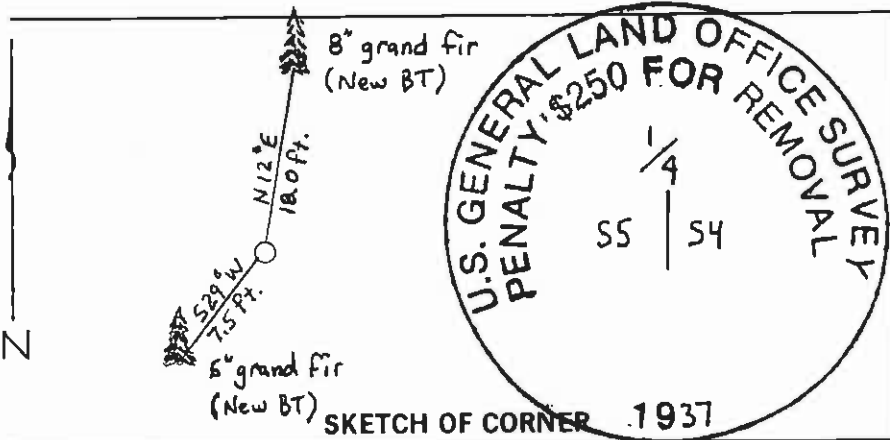
Set a stake alongside, marked 2 H.E.S. 755 on S.E. face.

Raise a mound of stone, 4 ft. base, 2 ft. high, SE. of corner."

RD 4 Forest Service Administrative Survey by M.A. Walker, 1936.

"Set standard Forest Service Marker with brass cap 2 ft. in ground, at east 1/4 corner Sec. 5, T.25N., R.19W., P.M.M., which is the northeast corner of site..."

(over)



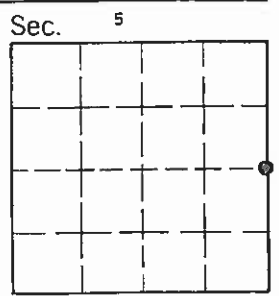
CERTIFICATION

I, Ronald J. Krueger
certify the information shown herein is true and correct
Ronald J. Krueger
Signature of Ground Party Chief

I, Daniel C. Smiley
certify that this Corner Record correctly represents work performed by me or under my direction in compliance with the "Corner Recordation Act" (70-22-101, et seq., M.C.A.)
Daniel C. Smiley
Signature of Surveyor & Seal

Date: 4/94 Reg. No. 35268807
U.S. FOREST SERVICE
Employer:

Office of Clerk and Recorder, County of Lake. This "corner record" was filed for record on NOV 16 '94 at 2:41 pm was noted on the cross-index plat and is assigned 361744, in



©-2019
By: [Signature]
Cross Index No. C-9 T. 25 N. R. 19 W. P.M.M.
Ruth E. Hodges
County Official
Adopted July 1, 1981, Montana Board of Professional Engineers & Land Surveyors

RECORD 5

G.L.O. Resurvey by Lyman and Inch, 1937.

"The 1/4 sec. cor. bet. secs. 4 and 5, identical with Cor. No. 2, of H.E.S. No. 755, and Cor. No. 4, of H.E.S. No. 623.; a quartzite stone, 12 x 8 x 8 ins. above ground marked and witnessed as described in the official record.

In place of the stone,

"Set an iron post, 3 ft. long, 1 in. diam., 28 ins. in the ground, for 1/4 sec. cor., with brass cap marked and with the original stone, set flush with the ground beside post.

1/4
S5 | S4
1937

Elevation 3382 ft."

RECORD 6

Numerous Certificates of Survey, Deed Exhibits, and Right of Way Plats show this 1/4 Corner.

FOUND

A firmly set 1 ins. diam. iron pipe with a 2 1/2 ins. G.L.O. brass cap showing 14 ins. above ground and marked as shown. This monument is surrounded by a 3 ft. diam. x 1 ft. high stone collar. In this stone collar we found the 1902 G.L.O. monument, a slatestone approximately 15 x 12 x 8 ins. with illegible chisel marks on top due to heavy lichen growth. From the G.L.O. brass cap;

A firmly set 2 ins. diam. iron pipe with 2 1/2 ins. brass cap showing 15 ins. above the ground bears N.5° E., 1.83 ft. distant. (1936 Forest Service Administrative Corner)

A root crown bears S.65 1/2° W., 30 1/2 lks. distant with a 12 ins. diam. larch fallen alongside, double blazed and scribed "HES 623 BT" and "HES 755 B."

No evidence of the other record bearing trees.

SET

We accept the 1937 G.L.O. iron pipe / brass cap monument for the 1/4 corner common to sections 4 and 5 and establish the following bearing trees;

A grand fir, 5 inches dbh, bears S.29° W., 7.5 feet distant, blazed and scribed "1/4 S5 BT."

A grand fir, 8 inches dbh, bears N.12° E., 18.0 feet distant, blazed and scribed "1/4 S4 BT."

Measurements were made with a Silva Ranger hand compass (declination 18° E.) and a steel tape to the center of the root crowns of all trees. Distances are horizontal.

We attached "BT" and "LAND SURVEY MONUMENT" signs to the BT's.