

INSTRUCTIONS

1. Original and/or subsequent record used to evaluate the corner position.
2. Description of evidence found, note discrepancies in the record, state method of establishing lost or obliterated corners.
3. Description of monument and accessories set to perpetuate the corner position.
4. Sketch of corner, show all pertinent data which can best be shown in a sketch example, corner marking, topography ties, position of accessories, etc.
5. Certification must be signed and sealed by Land Surveyor registered in the State of Montana.
6. Fill in Cross Index & Section Diagram at bottom of sheet.

CERTIFIED CORNER RECORDATION

Corner 19, 20, 29 & 30 T. 25 N. R. 20 W. P.M.M. Lake County

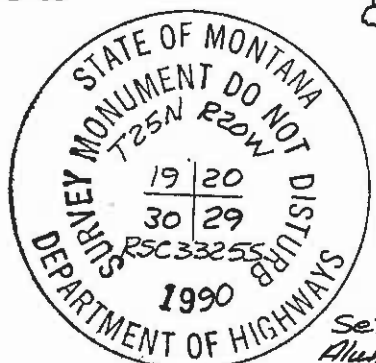
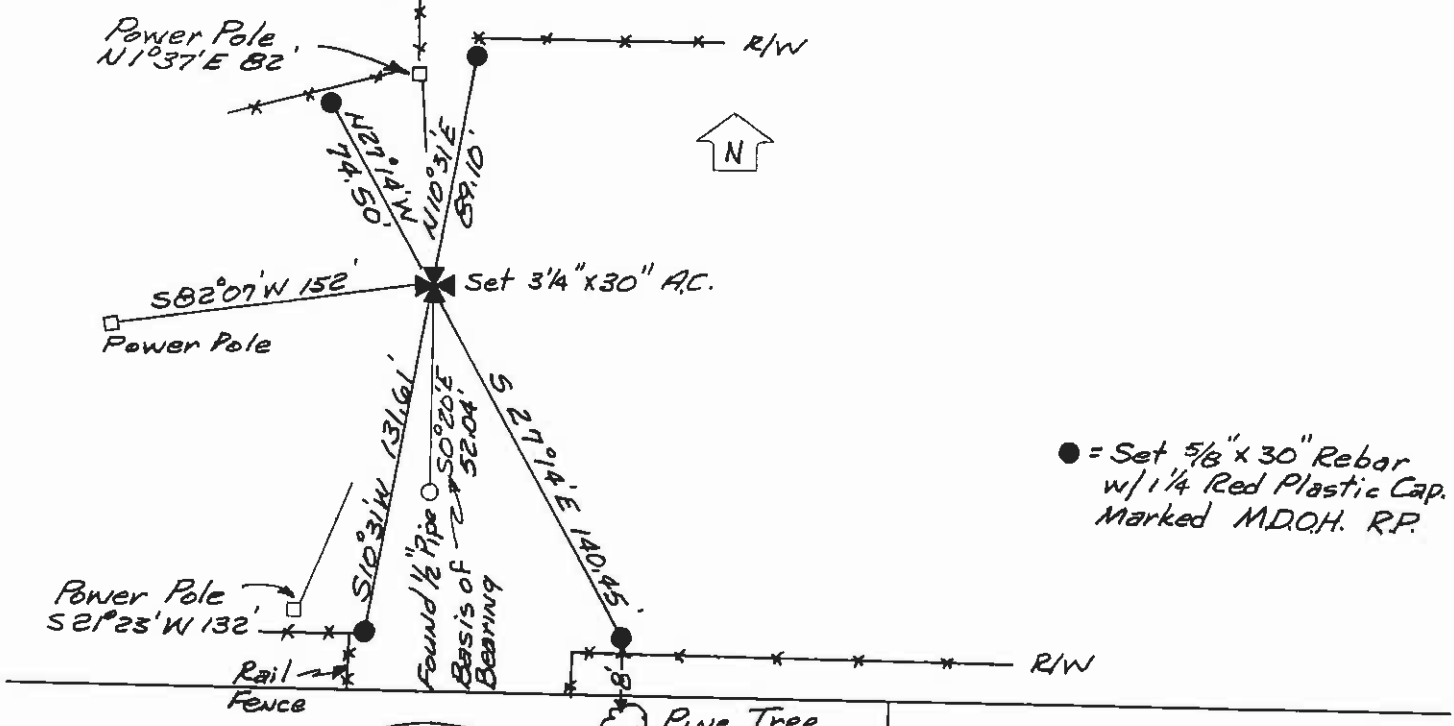
Record 1972 - Corner Recordation form by Harry P. Medland on file in Lake County. Sketch on back of corner form indicates a railroad spike was set at the corner location from which: A 1/2" pipe bears S 0°20' E, 52.04 feet.

A power pole bears North, 30.35 feet.
A gate post bears N 65° W, 42.67 feet.

Found 1988 - by Montana Department of Highways Construction Survey Crew, a railroad spike set flush in southbound lane of U.S. 93 from which a 1/2" pipe bears S 0°20' E., 52.04 feet. To perpetuate the corner position during construction 4-5/8" x 30" rebar with 1 1/4" red plastic caps marked "M.D.O.H. R.P." were set as per diagram below.

Set 1990 - After construction at the position of the found railroad spike, set a 3 1/4" x 30" aluminum monument, 30" in the ground, marked as per diagram below, with metal witness post along side. Corner position is 2 feet north of pavement.

Note: THE VALIDITY OF THIS CORNER POSITION WAS NOT VERIFIED, BUT WAS PERPETUATED.



SKETCH OF CORNER

Set 3 1/4" x 30" Aluminum Cap.

CERTIFICATION

I, James Lauckner
certify the information shown herein is true and correct.

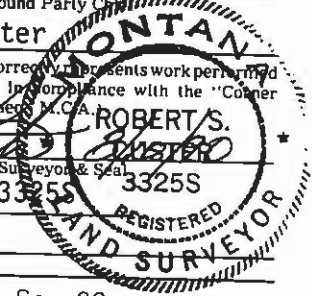
James Lauckner
Signature Ground Party

I, Robert S. Custer
certify that this Corner Record correctly represents work performed by me or under my direction in compliance with the "Corner Recordation Act" (7-22-01, et seq.) M.C.A.

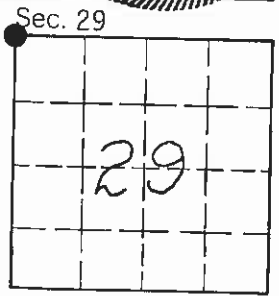
Robert S. Custer
Signature of Surveyor & Seal

Date: 7/12/90 Reg. No. 33255

Employer: MDOH



Office of Clerk and Recorder, County of Lake. This "corner record" was filed for record on August 20, 1990 at 12:27 pm was noted on the cross-index plat and is assigned microfile # 325715 in N/C WILHELMINA LAUGHLIN County Official



• - corner this sheet

D-1784

RSC:2:dak:217dd/1

Cross Index No. R-5 T. 25 N. R. 20 W. P.M.M.