

CERTIFIED LAND CORNER RECORDATION

DESCRIPTION OF CORNER EVIDENCE FOUND, AND ORIGINAL RECORD (IF KNOWN)

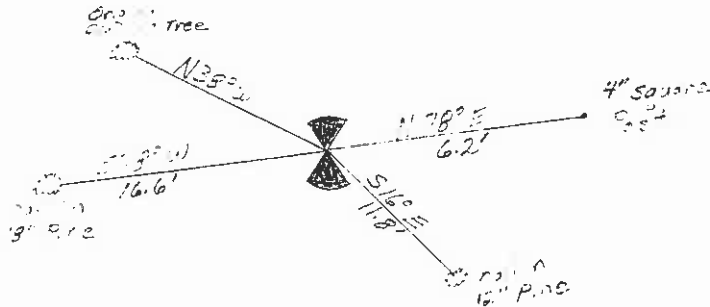
(Original) A limestone 15"X8"X5", 10" in the ground, with 1/4 on W. face. Pine 10" dia. bears N52°W, 24 lks. dist. marked S.B.T. Pine 18" dia. bears S79°E, 26 lks. dist. marked 1/4 S.B.T.
(FOUND) The original bearing trees. A 4" square post, rotted off.

DESCRIPTION OF MONUMENT AND ACCESSORIES ESTABLISHED TO PERPETUATE THE ORIGINAL LOCATION OF THIS CORNER:

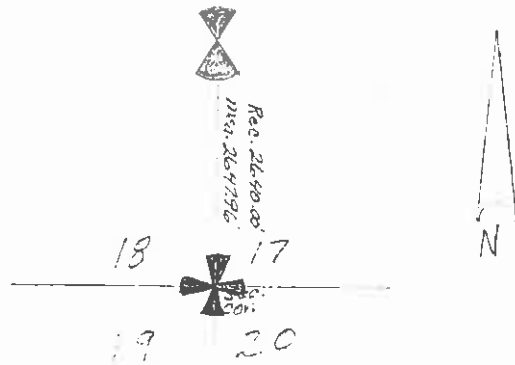
12-15-70

Date of work:.....

From the original bearing trees, I set a 3/4"X24" iron rod flush with the top of ground, and set a mound of rock around it. Referenced as follows:



SKETCH, WITH COURSE AND DISTANCE TO ADJACENT CORNERS IF DETERMINED IN THIS SURVEY. (MAY SKETCH OR PASTE REPRODUCTION ON REVERSE SIDE.)



Surveyor's Seal



I, \_\_\_\_\_ certify that the information shown herein is true and correct.

Signature of Ground Party Chief

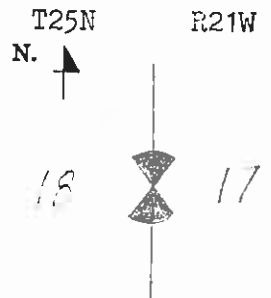
I, \_\_\_\_\_ certify that I have carefully performed or reviewed the work done on the diagrammed corner as reported on this recordation form and approve the same.

G. D. Johnson - County Surveyor

Signature of Surveyor

In co-op with State Highway Surveyors 2254-ES Registration Number

DIAGRAM OF CORNER:



= Corner recorded on the sheet

Office of Clerk and Recorder, County of Lalaie
is "corner record" was filed for record on the 24 day of August 1971, 4:40 P.M.
signed page No. C-195, in book No. 199834

EIMEL M. HARDING

Samuel Berg County Official

Cross Index No. N. 5 T. 25 N R. 21 W Mer.