

CERTIFIED LAND CORNER RECORDATION

218332

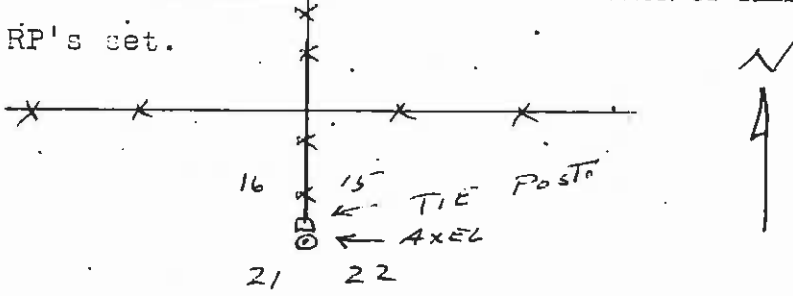
DESCRIPTION OF CORNER EVIDENCE FOUND, AND ORIGINAL RECORD (IF KNOWN)

Original record: Set a slate stone, 14x10x6 ins. 9 inches in the ground, for Cor. Secs. 15,16, 21 and 22 marked with 3 notches on S and E edges from which; A Fir 20 inches in diam. bears N50 10'E 259 lks dist marked T25N R22W S15 BT. A Tamarack 18 inches diam. bears S72 1/2 E 206 links dist marked T25N R22W S22 BT. A Cottonwood 6 inches in diam. bears S22W 243 lks. dist. marked T25N, R22W S21BT. Found: The southwest & southeast trees standing, the northeast BT fallen. No evidence of the original corner. A 3/4" axel was set for the corner. A Railroad Tie corner post is directly north of the axel.

DESCRIPTION OF MONUMENT AND ACCESSORIES ESTABLISHED TO PERPETUATE THE ORIGINAL LOCATION OF THIS CORNER:

No new RP's set.

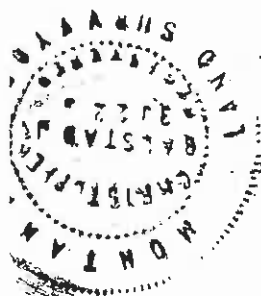
Date of work: 2/6/74



SKETCH, WITH COURSE AND DISTANCE TO ADJACENT CORNERS IF DETERMINED IN THIS SURVEY. (MAY SKETCH OR PASTE REPRODUCTION ON REVERSE SIDE.)

See Certificate of Survey #2293

Surveyor's Seal



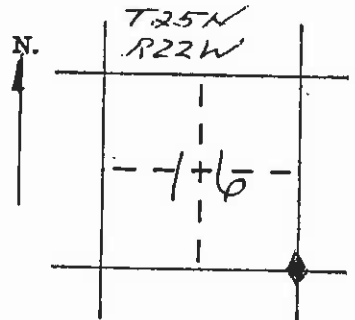
I, _____ certify that the information shown herein is true and correct.

Signature of Ground Party Chief

I, Christopher Balsstad Jr. certify that I have carefully performed or reviewed the work done on the diagrammed corner as reported on this recordation form and approve the same.

Christopher Balsstad Jr. Signature of Surveyor

DIAGRAM OF CORNER:



◆ = Corner recorded on the sheet

33225 Registration Number

of Clerk and Recorder, County of Lake

corner record" was filed for record on the AUG 19 1974 3:30 PM day of 19 was noted on the cross-index plat and is ed page No. C-513

ETHEL M. HARDING County Official

Cross Index No. N-13 T. 25 N. R. 22 W Mer.